



**STATE OF NEVADA
MEETING NOTICE AND AGENDA
NEVADA TRIBAL EMERGENCY COORDINATING COUNCIL**

Name of Organization: Nevada Tribal Emergency Coordinating Council

Date and Time of Meeting: Friday, February 28, 2020 – 9:00 a.m.

Carson City Venue:

Nevada Department of Transportation
Conference Room #302
1263 S. Stewart Street
Carson City, Nevada 89701

This meeting will be teleconferenced beginning at 9:00 a.m. Interested parties may access this meeting as follows:

Dial: 888-273-3658, Access Code: 1453277

The Nevada Tribal Emergency Coordinating Council (NTECC) may act on items marked "For Possible Action." Items may be taken out of the order presented on the agenda at the discretion of the Co-Chair(s). Items may be combined for consideration by the NTECC at the discretion of the Co-Chair(s). Items may be pulled or removed from the agenda at any time.

Please Note: Witnesses wishing to have their complete testimony/handouts included in the permanent record of this meeting should provide a written or electronic copy to the NTECC administrative support staff. Minutes of the meeting are produced in a summary format and are not verbatim.

- 1. Call to Order and Roll Call** – Co-Chair, Chief Justin Luna, Division of Emergency Management and Homeland Security (DEM/HS).
- 2. Public Comment** – (Discussion Only) – No action may be taken upon a matter raised under this item of the agenda until the matter itself has been specifically included on an agenda as an item upon which action may be taken. Public comments may be limited to three minutes per person at the discretion of the Co-Chair. Comments will not be restricted based on viewpoint.
- 3. Approval of Minutes** – (Discussion/For Possible Action) – Co-Chair, Chief Justin Luna, DEM/HS. The NTECC will discuss whether to approve the minutes of the November 8, 2019, NTECC meeting.
- 4. Current Nevada Tribal Emergency Coordinating Council (NTECC) Tribal Designations and Appointment Status** – (Discussion Only) – Co-Chair, Chief Justin Luna, DEM/HS. The Co-Chair will present the NTECC with the current status of NTECC member designations and appointments.

5. **Nevada Public Bodies Updates** – (Discussion Only) – Tribal representatives appointed to the following Nevada public bodies may provide an update on their role with each public body, as well as, initiatives and projects that impact Nevada tribes:
 - a. Nevada Resilience Advisory Committee – Dave Hunkup, Reno Sparks Indian Colony (RSIC).
 - b. Nevada Commission on Homeland Security (NCHS) – Lisa Christensen, Washoe Tribe of Nevada and California.
 - c. NCHS Finance Committee – Chief Justin Luna, DEM/HS.
 - d. Nevada State Emergency Response Commission (SERC) – Lance Chantler, RSIC.
 - e. Nevada Intrastate Mutual Aid Committee (IMAC) – Brent Hunter, Duck Valley Shoshone Paiute Tribe.
 - f. Nevada Legislative Commission on Wildfire Mitigation – Jackie Conway, NTECC Emergency Management Tribal Coordinator, DEM/HS.
6. **Discussion on Tribal Participation in the Nevada Emergency Preparedness Association (NEPA)** – (Discussion Only) – Roy Anderson, Washoe County School District and NEPA President. Mr. Anderson will discuss efforts underway to engage tribal representation within the NEPA organization to improve statewide resilience through cooperative, multi-stakeholder processes and the professional development of emergency preparedness partners.
7. **Update from the Federal Emergency Management Agency (FEMA) Region IX** - (Discussion Only) – Chris Poehlmann, FEMA Region IX Tribal Liaison. Mr. Poehlmann will provide the NTECC with an update of FEMA Region IX activities at a regional and Nevada-specific level to include updates on the FEMA Region IX Tribal Partners Meeting in Reno, Nevada, and new grant opportunities and training planned for Nevada.
8. **Discussion on the Upcoming Hazard Mitigation Training Available Through the Federal Emergency Management Agency (FEMA) Region IX Specific to Tribal Needs.** – (Discussion Only) – Janell Woodward, State Hazard Mitigation Officer, DEM/HS. The NTECC will be provided information on FEMA’s E0582 Mitigation for Tribal Governments course that will be offered to Nevada in 2020. This course is designed to help tribal emergency managers and planners identify mitigation planning requirements and to identify mitigation opportunities to protect their communities. Additional information may also be presented from the State perspective with regarding to tribal hazard mitigation planning. The NTECC will discuss preferred timing and venue location of this course delivery during July, August, or September 2020.
9. **Update from the Bureau of Indian Affairs (BIA)** – (Discussion Only) – Patrick Vacha, Acting Division Chief, BIA. Mr. Vacha will provide the NTECC with an update on current BIA activities and initiatives including a status update on the Southwest Regional BIA Emergency Management position, Coronavirus as an agenda item for the March 5, 2020, monthly Tribal Assistance Coordination Group call, and information on the Emergency Management and Response Track at the Tribal Lands and Environment Forum in August 2020.

10. **Discussion on Emergency Management Performance Grant (EMPG) Allocations** – (Discussion Only) – Co-Chair, Chief Justin Luna, DEM/HS, and Kelli Anderson, Emergency Management Program Manager, DEM/HS. The NTECC will discuss the Emergency Management Performance Grant (EMPG) program, its allocations for statewide programs, and historical information for how this allocation model was developed. The NTECC will also discuss the current EMPG allocation model specific to Nevada's tribal nations.
11. **Interoperability Update** – (Discussion Only) – Melissa Friend, Emergency Management Program Manager, DEM/HS. Ms. Friend will update the NTECC on current interoperability efforts in Nevada to include the status of the Nevada Shared Radio System, First Responder Network Authority (FirstNet) build out in the state, and an outline of the current status regarding the tribal communications boxes.
12. **Project, Grant, and Financial Report Updates from DEM** – (Discussion Only) – A DEM representative may provide the NTECC with updates on the following:
 - a. Inter-Tribal Emergency Response Commission (ITERC) closeout;
 - b. DEM/HS tribal-support contract positions;
 - c. Tribal preparedness outreach; and
 - d. Grant and financial updates for NTECC.
13. **Update on Tribal Health Preparedness Efforts**– (Discussion Only) – Nevada Division of Public and Behavioral Health (DPBH) Representative. The NTECC will be provided an update on the Crisis Standards of Care workshops scheduled now through Spring 2020 with each of Nevada's four Healthcare Coalitions, an overview of the Alternate Care Sites (ACS)/Disaster Medical Facility (DMF)/Federal Medical Station (FMS) workshop held on February 25, 2020, an overview of DPBH response to the 2019 Novel Coronavirus, and an update on the collaboration between Public Health Preparedness (PHP) and the Centers for Disease Control (CDC) regarding a tribal Community Assessment for Public Health Emergency Response (CASPER) for Nevada and associated challenges with that process.
14. **Tribal Updates** – (Discussion Only) – Tribal representatives will be given the opportunity to provide an update on any initiatives, projects, current events, or upcoming training opportunities related to emergency management within their tribal jurisdiction. Tribal updates discussed have been provided to DEM/HS prior to this meeting for transparency, and any update provided that was not submitted in advance of this meeting may not be heard by the NTECC under this agenda item. Tribal updates will be heard from the following tribes:
 - Duck Valley Shoshone Paiute Tribe
 - Elko Band of the Te-Moak Tribe of Western Shoshone
 - Reno Sparks Indian Colony
15. **Discussion on the Nevada Tribal Emergency Coordinating Council Logo** – (Discussion Only) – Co-Chair Justin Luna, DEM/HS. The NTECC will discuss ideas to encourage NTECC logo submissions for future review. Previous discussion recommended the NTECC develop an official logo representing the Council and its support of Nevada's tribal communities.

16. **Update from the Nevada Volunteer Organizations Active in Disasters (VOAD)**
– (Discussion Only) – Jill Hemenway, American Red Cross of Northern Nevada. Ms. Hemenway will provide the NTECC with an update of Nevada VOAD activities at a statewide and Tribal-specific level to include updates on upcoming meetings and new training opportunities planned for Nevada.
 17. **Public Comment** – (Discussion Only) – No action may be taken upon a matter raised under this item of the agenda until the matter itself has been specifically included on an agenda as an item upon which action may be taken. Public comments may be limited to 3 minutes per person at the discretion of the Co-Chairs. Comments will not be restricted based on viewpoint.
 18. **Adjourn** – (Discussion/For Possible Action)
-

This is a public meeting. In conformance with the Nevada Public Meeting Law, this agenda was posted or caused to be posted on or before 9:00 a.m. on February 25, 2020, at the following locations:

Las Vegas Governor's Office, 555 E. Washington Avenue, Las Vegas, NV;
Carson City Governor's Office, 101 N. Carson Street, Carson City, NV;
NV State Emergency Operations Center, 2478 Fairview Drive, Carson City, NV;
Clark County Fire Department, 575 E. Flamingo Road, Las Vegas, NV;
Nevada Department of Transportation, 1263 S. Stewart Street, Carson City, NV; and

Posted to the following websites:

- Nevada Department of Public Safety's Division of Emergency Management and Homeland Security Public Meeting Notifications/Information Website:
https://dem.nv.gov/DEM/DEM_Public_Meeting_Information/
- Nevada Public Notice Website: www.notice.nv.gov

We are pleased to make reasonable accommodations for members of the public who are disabled. If special arrangements for the meeting are necessary, or if you need to obtain meeting materials, please notify Karen Hall, NTECC support staff, Division of Emergency Management and Homeland Security, 2478 Fairview Drive, Carson City, Nevada 89701 or (775) 687-0300. 24-hour advance notice is requested. Thank you.



Meeting Minutes Nevada Tribal Emergency Coordinating Council

Attendance	DATE	Friday, November 8, 2019
	TIME	9:00 A.M.
	LOCATION	Nevada Division of Transportation Conference Room #302 1263 S. Stewart Street Carson City, NV 89701
	METHOD	Teleconference
	RECORDER	Karen Hall
Voting Membership		
Name	Designated/Appointed Representative:	Attendance Status
Marla Stanton	Battle Mountain Band of Te-Moak Tribe of Western Shoshone	Abs
Brent Hunter	Duck Valley Shoshone Paiute Tribe	Abs
Marian Perez	Duckwater Shoshone Tribe	Abs
Jill Perez	Ely Shoshone Tribe	X
Jackie Conway, Co-Chair	Fallon Paiute-Shoshone Tribe	X
Duane Masters Sr.	Fort McDermitt Paiute and Shoshone Tribe	Abs
Harriett Parker	Las Vegas Paiute Tribe	X
Donald Pelt	Pyramid Lake Paiute Tribe	X
David Hunkup	Reno Sparks Indian Colony	Abs
Tanya Reynolds	South Fork Band of Te-Moak Tribe of Western Shoshone	X
Sookaaki Charley	Timbisha Shoshone Tribe	X
Tashina Jim	Walker River Paiute Tribe	X
Non-Member Representatives/Support		
Name	Entity Represented:	Attendance Status
Justin Luna, Co-Chair	Nevada Division of Emergency Management/Homeland Security	X
Samantha Ladich	Nevada Office of the Attorney General	X
Karen Hall	Nevada Division of Emergency Management/Homeland Security	X

1. Call to Order and Roll Call

Chief Justin Luna, Nevada Division of Emergency Management and Homeland Security (DEM/HS), and Co-Chair of the Nevada Tribal Emergency Coordinating Council (NTECC), called the meeting to order. Karen Hall, DEM/HS, performed roll call. Quorum was established for the meeting. The NTECC was informed that Agenda Item #11 would be pulled from the meeting and rescheduled for a later date due the inability of the presenter to attend today's meeting.

2. Public Comment

Chief Luna, DEM/HS, opened discussion for public comment. No public comment was provided at the physical venue or from teleconference participants.

3. Approval of Minutes

Chief Luna, DEM/HS, opened discussion on the review and approval of minutes provided from the August 16, 2019, NTECC meeting. Harriett Parker, Las Vegas Paiute Tribe, requested a correction to the spelling of her name on Page 1. Chief Luna called for a motion to approve the minutes with Ms. Parker’s correction on record. Tanya Reynolds, South Fork Band of the Te-Moak Tribe of Western Shoshone, motioned to approve the meeting minutes with the correction noted, and Jill Perez, Ely Shoshone Tribe, seconded the motion. No discussion was presented on the motion. All were in favor with no opposition. Motion passed unanimously.

4. Introduction of NTECC Membership, Tribal Designations, and Appointment Status

Chief Luna, DEM/HS, opened discussion on the introduction of current NTECC membership, designations, and appointment status based on a request from the past meeting for formal introductions of current members. Members present introduced themselves as follows:

- Jill Perez introduced herself as the Environmental Grant Administrator for the Ely Shoshone Tribe;
- Jackie Conway introduced herself as the Emergency Management Coordinator for the Fallon Paiute Shoshone Tribe and current Co-Chair for NTECC;
- Harriett Parker introduced herself as the Safety Officer and Emergency Management Coordinator for the Las Vegas Paiute Tribe;
- Don Pelt introduced himself as representing the Pyramid Lake Paiute Tribe (PLPT) and spoke to the efforts of the PLPT deployment to the Storm Area 51 event. Mr. Pelt thanked the State for it’s support of that event, and to his knowledge, PLPT was the only tribal representatives to respond to the event.
- Tanya Reynolds introduced herself as the Environmental Coordinator for the Te-Moak Tribe of Western Shoshone;
- Sookaaki Charley introduced herself as the Administrator for the Timbisha Shoshone Tribe in addition to currently acting Environmental Director until a replacement is found;
- Tashina Jim introduced herself as the GAP Manager for the Environmental Department and emergency management contact for the Walker River Paiute Tribe; and
- Justin Luna introduced himself as the Chief of DEM/HS and a non-voting Co-Chair for the NTECC.

Chief Luna welcomed Ms. Charley as a new member of the NTECC representing the Timbisha Shoshone Tribe. Ms. Charley replaces Spike Jackson. Additional resignations were noted including that of Curtis Simon Jr. from the Elko Band of the Te-Moak Tribe of Western Shoshone and John Brady of the Yomba Shoshone Tribe. Efforts are underway to replace designees for both positions.

5. Nomination and Selection of the Nevada Tribal Emergency Coordinating Council (NTECC) Tribal Chair

Chief Luna, DEM/HS, opened discussion on this agenda item noting the DEM/HS offer of a tribal support contract position to Jackie Conway. Ms. Conway informed the NTECC of her formal resignation as the NTECC tribal Co-Chair and expressed her wishes that a selection for a new tribal Co-Chair could be made at this meeting. Chief Luna opened nominations for a new tribal Co-Chair and explained that if multiple nominations were received, he would be required to perform another roll call to follow Nevada Open Meeting Law. Samantha

DRAFT MINUTES – for approval at the 2/28/20 NTECC Meeting

Ladich, Senior Deputy Attorney General, Nevada Office of the Attorney General, informed the NTECC that self-nominations are allowable. Ms. Conway asked if anyone was interested in this position, and Don Pelt nominated Harriett Parker for the tribal Co-Chair position. Ms. Parker inquired on what the responsibilities of this position would be, with Chief Luna indicating it would be a collaborative position for agenda development, future efforts to move the NTECC forward, and addressing tribal issues related to emergency management and homeland security. Ms. Parker presented concern should her current residence in southern Nevada be an issue in addition to the time commitment necessary to serve as the tribal Co-Chair. Chief Luna indicated that having the tribal Co-Chair position in southern Nevada may be beneficial, and the time commitment would most likely be less than four hours per month. Chief Luna asked if Ms. Parker was interested in accepting the nomination, and Ms. Parker indicated that if there are no other nominations, she would honorably accept the nomination. Tanya Reynolds seconded the motion. No discussion was presented on the motion. All were in favor with no opposition. Motion passed unanimously. Chief Luna congratulated Ms. Parker on her nomination, and he will contact her to coordinate efforts moving forward.

6. NTECC Bylaws Review

Chief Luna, DEM/HS, opened discussion on the review of the current NTECC bylaws referring to the Handouts 6a and 6b provided. As the bylaws were reviewed at the last meeting, changes were tracked to clearly identify each change, and those changes are reflected in Handout 6a. Section V changes included the removal of the 3-day notice requirement, and Section VI was amended to add Nevada Open Meeting Law verbiage for NTECC subcommittees. Additionally, a clean copy of the revised and approved bylaws was presented to the NTECC in Handout 6b. Chief Luna indicated he will reach out to the newly elected tribal Co-Chair to get a signed copy of the bylaws for future distribution to NTECC members. No further discussion was provided on this agenda item.

7. Nevada Public Bodies Updates

Chief Luna, DEM/HS, opened discussion on the Nevada Public Bodies Updates noted on the agenda. The discussion for each public body is summarized below:

- a. **Nevada Resilience Advisory Committee (NRAC)** – Chief Luna noted that David Hunkup, Reno Sparks Indian Colony, was not at the meeting today, so he could brief the NTECC on the current NRAC activities. The NRAC met on September 10, 2019, and again on October 8, 2019. Highlights from those meetings included seismic risk recommendations provided by Dr. Craig dePolo, University of Nevada Reno. These recommendations will be included in the DEM/HS 2019 Annual Report. Additionally, Federal Fiscal Year (FFY) 2020 Strategic Capacities to be Maintained were developed which includes support for tribal Citizen Corps and tribal National Incident Management System (NIMS) initiatives. The next NRAC meeting is scheduled for November 19, 2019. No questions were provided by NTECC members regarding this update.
- b. **Nevada Commission on Homeland Security (NCHS)** – Chief Luna inquired if Lisa Christensen, Washoe Tribes of Nevada/California, had joined the meeting telephonically, and while that was confirmed, Chief Luna updated the NTECC on the October 21, 2019, NCHS meeting highlights. Chief Luna spoke to the approval of the strategic capacities for FFY20. Recommendations were reviewed by the Finance Committee and the NRAC. Lisa Christensen, NCHS Commission member – spoke to the October 21st meeting and the Threat and Hazard Identification and Risk Assessment (THIRA), the timeline for HSGP provided at the meeting. She can send

DRAFT MINUTES – for approval at the 2/28/20 NTECC Meeting

out the email, with Chief Luna indicating she can send that information to Karen Hall, DEM/HS, for distribution. The Washoe Tribes of Nevada/California found a Chief of Police for her department now, so she should be more available moving forward.

- c. **NCHS Finance Committee** – Chief Luna spoke to the last Finance Committee meeting held on September 16, 2019. The main action taken at this meeting was to provide recommendations on FFY20 Strategic Capacities to be Maintained. Those recommendations were provided to the NCHS on October 21, 2019. The next Finance Committee has not yet been scheduled.
- d. **State Emergency Response Commission (SERC)**– Lance Chantler, Reno Sparks Indian Colony (RSIC) and SERC representative spoke to the current difficulties in establishing quorum for SERC meetings resulting in cancellations of the last two meetings scheduled. Mr. Chantler indicated that funding has been released for the SERC grant, and any tribe with an active Local Emergency Planning Committee (LEPC) or Tribal Emergency Response Commission (TERC) can be eligible for this grant funding through SERC. Currently, there is approximately \$85,000 available per agency. Mr. Chantler asked that NTECC members contact him for additional information, and he can get information to Karen Hall, DEM/HS, for distribution. Kelli Anderson, DEM/HS, inquired if the NTECC would be eligible as an existing TERC, and then have DEM/HS push out the funding for specific tribal areas. Ms. Anderson wanted to find out if there is eligibility for multiple tribes. Mr. Chantler indicated that the State Fire Marshal acts as a grantee. Crystal Harjo, DEM/HS, indicated that the state recognized the Inter-Tribal Emergency Response Commission (ITERC) and the Inter-Tribal Council of Nevada (ITCN) as a LEPC, and previously they were both eligible. Don Pelt spoke to tribes participating in their county's LEPC, and whether that affected eligibility. Mr. Chantler indicated that would deem the tribes eligible. Tanya Reynolds wanted clarification on if tribes do belong to the LEPC, if they are still eligible to apply for this funding, with Mr. Chantler confirming that tribes that do belong to a LEPC are eligible.
- e. **Interstate Mutual Aid Compact (IMAC)** – Chief Luna indicated that Brent Hunter, Duck Valley Shoshone Paiute Tribe, and the representative for the IMAC, is not available today; however, Jon Bakkedahl, DEM/HS, has been asked to speak on this item. Mr. Bakkedahl indicated that the last meeting of the IMAC was cancelled due to the Storm Area 51 event. There is a new DEM/HS staff member starting next Tuesday that will lead this meeting moving forward, and that meeting will be scheduled in early 2020 before the April 2020 deadline as an annual requirement.

8. Update from the FEMA Region IX

Chief Luna, DEM/HS, opened discussion for the update from the Federal Emergency Management Agency (FEMA) Region IX representative. Mr. Chris Poehlmann, FEMA Region IX, spoke to a recent national conference he attended regarding technical assistance for homeland security grants. The focus of that conference was on tribal preliminary disaster mitigation (PDM) funding available with a tribal set-aside amount of \$15,000,000. Applications for this funding will be due January 31, 2020, should there be any tribes interested in updating hazard mitigation plans or submitting new hazard mitigation projects. Mr. Poehlmann spoke to major changes in the funding source, and to the new Building Resilient Infrastructure and Communities (BRIC) program, and the potential for a significant funding increase to the program which may be a great opportunity for the tribes. Mr. Poehlmann also spoke to tribal participation in free training offered at the Emergency Management Institute (EMI) and another tribal training opportunity offered in Alabama in

DRAFT MINUTES – for approval at the 2/28/20 NTECC Meeting

March 2020. Mr. Poehlmann suggested that any interested tribal members move quickly in reserving this training. This training is at no cost to any tribal nation wanting to attend. Mr. Poehlmann also spoke to Mark Shugart as a FEMA Integration Team (FIT) member now working with the State. Chief Luna, DEM/HS, spoke to Mr. Shugart's integration into DEM/HS as a FIT member providing support in recovery and preparedness. Although DEM/HS had requested several FIT positions, that is on hold now pending further review by FEMA and Congress. The effectiveness of the FIT program is being reviewed, and Chief Luna is hopeful that both bodies will find the value in the program. Chief Luna spoke to the FEMA training at EMI and Alabama training, and requested the information be sent to Karen Hall, DEM/HS, for distribution. Mr. Poehlmann can send this information to Ms. Hall, and this information has been sent out by FEMA. Crystal Harjo, DEM/HS, has sent out the information multiple times as well in the past, and the tribes have taken advantage of the training. Tanya Reynolds spoke to pre-requisites required to attend, and tribal leadership interest in attending; however, they are concerned about the difficulties associated with on-line training and training schedules. Per Jon Bakkedahl, DEM/HS, the consortium mandates the basic pre-requisites, and will not accept applicants not having taken all pre-requisite courses. The Incident Command System (ICS) 200 course is comprehensive and offered as "in-person" training. There are several ways to assist with taking the tests on some of the larger classes including use of the Summary Pages as an educational review tool. In-person classes have a little more assistance for students when there are questions. People are placed in groups, and this is accepted. Ms. Harjo can look at the pre-requisites involved for these courses and can go out to the tribal areas needing assistance. Classroom delivery takes much longer.

Chief Luna inquired on the PDM funding discussion, and asked Kelli Anderson to expand on that discussion. Ms. Anderson spoke to outreach throughout the state for quality application submissions. The process can be difficult, and technical assistance is offered to assist anyone with a need for help. Ms. Anderson encouraged that anyone needing assistance call DEM/HS, and either the Hazard Mitigation Officer or herself can be of assistance. Additionally, Mr. Shugart can assist as well. Ms. Anderson spoke to the tribes having a set-aside that may be separate from the DEM/HS application requirement through DEM/HS proper. Mr. Poehlmann indicated that tribes can go directly through FEMA if they choose. Ms. Anderson said that the mitigation program statewide has been successful, and is hopeful that Nevada will obtain quality funding. If tribal hazard mitigation plans are not complete, please make sure to get them done. This funding can assist that process. Jackie Conway, DEM/HS, spoke to her experience working on PDM and receiving direct FEMA funding. There is also funding to use for advanced assistance, and she utilized that source to address a structural engineer to assess buildings, etc. There is a worksheet that is sent to help identify what funding is appropriate. Chief Luna asked Mr. Poehlmann to send the PDM set-aside information to Ms. Hall. Chief Luna spoke to BRIC and being interested in what happens during that transition.

9. Update from the Bureau of Indian Affairs (BIA)

Pat Vacha, Acting Director, BIA, spoke to Josh Allan's departure, and the plan to fill his former position. The process is not fast, and there are other positions open that are awaiting to be filled as well. There is a great deal of activity going on right now in the Great Plains and FEMA Regions 5 and 8. There are 25 approved presidential declarations (or part of a state declaration) going on right now. There are many gaps still requiring to be filed, especially relating to FEMA Individual Assistance (IA). New engagements and coordination with Volunteer Organizations Aiding in Disaster (VOAD) partners is occurring, and emphasis is being placed on a two-way view at volunteer agencies working with tribal communities, and how that process is different than working with the counties or states. The goal is to

DRAFT MINUTES – for approval at the 2/28/20 NTECC Meeting

have at least 1-2 VOAD representatives. In May 2020, the National VOAD conference will be held in Phoenix, Arizona, and there is hope that a tribal track discussion to leverage this coordination will be put on the agenda. As part of this VOAD initiative, Mr. Poehlmann indicated that he hopes that three regional tribal assistance conferences will occur. In the past, annual conferences were held, but the focus is to find new participation and move the conferences around regionally. Right now, the focus is on areas in the northwest and northeast. Though not specific to Nevada, there are events that are close. Mr. Vacha is the only member of the BIA Emergency Management team currently, and he can be reached at (202) 577-5918 for any questions. Mr. Vacha emphasized not to hesitate to call him with any questions.

Chief Luna spoke to any VOAD representatives being at the meeting today, and Jill Hemenway, American Red Cross (ARC), indicated that the next VOAD/ARC meeting is December 4, 2019, 2:00 p.m., at the Regional Emergency Operations Center (REOC) in Reno, and there will be a call-in number available. Information will be sent to Karen Hall, DEM/HS, for distribution. Ms. Hemenway thanked Jill Perez for her participation at the last meeting. Crystal Harjo, DEM/HS, has been trying to attend VOAD meetings in person, and she was on the call as well. The information provided was good, and the Washoe County Health District is requesting volunteers for Silver Crucible; along with AmeriCorps information. Anything that comes out of VOAD, Ms. Harjo will pass on to tribal communities. There is a push forward for more tribal participation.

10. Update on Inter-Tribal Council of Nevada (ITCN) Efforts to Address Wildfire Mitigation with the Nevada Legislative Commission.

Clifford Banuelos, ITCN, provided an update to the NTECC on ITCN's involvement and representation on the Wildfire Mitigation Project. Mr. Banuelos emphasized the importance of NTECC representation in that project, and spoke to the possibility of Jackie Conway, Fallon Paiute Shoshone Tribe, as the suggested representative. Chief Justin Luna, DEM/HS, referred the NTECC to the handouts provided by Mr. Banuelos including the resolution and letter. Mr. Banuelos mirrored the language from the legislature and focused on the portion of the language recommending Ms. Conway as the representative. During the last emergency managers meeting, Jon Bakkedahl, DEM/HS, recommended that this letter be created to help enhance Ms. Conway's duties with DEM/HS. Chief Luna opened discussion for any questions. Mr. Bakkedahl recommended that once this body is up and running, an update should be added to the NTECC agenda under public body updates.

11. Overview of the Environmental Assistance Program (EAP) Web Map Project

This item was pulled from the agenda during the meeting as the presenter was not available. This overview may be revisited on a future NTECC meeting agenda.

12. Interoperability Update

Melissa Friend, DEM/HS, updated the NTECC on the Nevada Shared Radio System project starting in 2020 with a projected end date of 2023. The project is on track with multiple partners including the Nevada Department of Transportation, NV Energy, and many others. FirstNet is continuing its build-out, and there are 10 new sites including Pyramid Lake and one near Vya, Nevada. Ms. Friend also spoke to the Emergency Management Boxes that were returned to the State, and equipment will need to be updated within the boxes. Ms. Friend indicated that she would send out a survey through the listserv to see what equipment and technology should be in the boxes. There is funding available; however not enough to replace all the equipment required. Funding to replace the equipment ranges from just a

DRAFT MINUTES – for approval at the 2/28/20 NTECC Meeting

few thousand dollars up to \$20,000. Harriett Parker, NTECC Co-Chair, recalled that several years ago, there was an annual fee for the satellite phones, and the Inter-Tribal Emergency Response Commission (ITERC) was able to fund the phones. Ms. Parker questioned if there was funding available, or if that would be a tribal responsibility. Kelli Anderson, DEM/HS, indicated that the State's Division of Public and Behavioral Health issued a grant for \$18,000 annually to DEM/HS, to distribute for services on satellite phones, boxes, or replacement equipment. That is one of the reasons for the survey that will be sent out to determine how the boxes are being used, what is needed, determining how many boxes can be replaced, and phasing out old equipment. Ms. Anderson asked that interested parties contact her directly to work through those issues. Funding must be reserved as much as possible to replace the boxes. Ms. Parker did send an inventory list to Crystal Harjo, DEM/HS, and Ms. Harjo confirmed receipt of that list. Additional discussion involved switching out of radios and matching up the boxes to the radios. Funding for the satellite phones would come from Public Health Preparedness. It does not appear that any of the satellite phone subscriptions have been renewed as of last year, and it is assumed that the phones will no longer work. Don Pelt inquired on what would happen to the boxes once the equipment was recycled. Ms. Anderson indicated that once the inventory is back, a case by case review will be done. Some of the boxes were between \$55,000 and \$60,000 to purchase. If the equipment is defunct, it can be taken out of service. If it is salvageable, it can be redistributed per grant requirements.

13. Project, Grant, and Financial Report Updates from DEM

Chief Luna, DEM/HS, opened discussion on this agenda item, and update summaries are noted below:

a. Inter-Tribal Emergency Response Commission (ITERC) closeout

Crystal Harjo, DEM/HS, reported that all equipment and furniture has been removed, and she was able to get all electronic files from ITCN in addition to most of the important paper files. Ms. Harjo will be organizing and scanning the information. Information pertaining to the original National Incident Management System (NIMS) project regarding emergency management plans for the tribes has been located as well as information on tribal clinic emergency operation plans and assessments. This helps by not having to start from scratch. Ms. Harjo also indicated that she does have some copies of NIMS compliance documents, and that information will be shared with respective tribal agencies to identify existing capability and needs.

b. DEM/HS tribal-support contract positions

Jon Bakkedahl, DEM/HS, spoke to Ms. Harjo's work on tribal health preparedness and DEM/HS initiatives, participation on the Storm Area 51 event, and the Silver Crucible Exercise. Jackie Conway will be starting on November 18, 2020 and will be working with Ms. Harjo to support planning and training efforts in the field facilitating planning and training efforts in addition to addressing the communication boxes. Available funding for this year does have a deadline, so extra effort is being applied to do what is possible for the boxes. A third tribal position may need to be posted at some point if recommended by the NTECC. Mark Shugart, FEMA FIT Team member has also been helping with preparedness, mitigation, and tribal support.

c. Tribal preparedness outreach

Jon Bakkedahl, DEM/HS, indicated that if anything is needed from the tribal positions at DEM/HS, to please reach out to him or the tribal staff for assistance.

d. Grant and financial updates for NTECC 120:42

Kelli Anderson, DEM/HS, provided the NTECC with grant and financial updates indicating that there are currently five open grants funding NTECC programs to include:

- Emergency Management Performance Grant (EMPG) 2018 – The NTECC received \$67,027.00;
- EMPG 2018 - NTECC received \$67,027.00;
- EMPG 2019 - NTECC received \$67,027.00;
- Homeland Security Grant Program (HSGP) 2017 – NTECC received \$43,991.00;
- HSGP 2018 – NTECC received \$85,632.00;
- HSGP 2019 – NTECC received \$92,700.00; and
- The total awarded for both EMPG and HSGP is \$356,377.00.

These grants expire at different times, different months, and different years. Effort is being made to spend older funding first, and \$18,752.00 has been spent to date. The amount of spending will increase with the onboarding of the NTECC temporary contract positions. The funding for these grants is applied at about 70-80% for payroll to support contracting services and outfitting positions with necessary workspace and equipment, and the remainder is for travel. Because of the new positions, the budgets are being left open a bit for the next 12 months to see how exactly the travel funding is used. There will be a lot of driving with less flying, so the expenditure in the travel category may not be as high as projected. Ms. Anderson indicated that the oldest grant would expire in June of 2020, and there is 6-8 months to spend down that grant. It is not anticipated that there will be any issue with spending down the oldest grant. The State Public Health Preparedness (PHP) also provides Assistant Secretary for Preparedness and Response (ASPR)/CDC (Centers for Disease Control) funding at \$18,000 per year, and then \$108,000 is budgeted annually to support one position. The DEM/HS vision is to have the one full-time position on the health side, and eventually two full-time positions on the HSGP and EMPG side. With those three positions, it is the hope that this can saturate the need for tribal services in planning, training, and exercise areas, and with State PHP working with DEM/HS, significant advancements are occurring that affect tribal services and needs. Overall, there is about \$475,000.00 that has been allocated to this program. Getting through the next few years, it will be imperative to watch how funding is used, and to make sure to address future needs of the NTECC programs.

14. Update on Tribal Health Preparedness Efforts

Chief Luna, DEM/HS, opened discussion on tribal health preparedness efforts. Crystal Harjo, DEM/HS, spoke to the information provided on the quarterly progress report handouts 14a and 14b which had been submitted to State PHP for grant purposes. At first glance, some of the reporting may appear very basic or low; however, Ms. Harjo only came onto the job in July 2019, and now that some work has been done, there is an increase in the progress. One of the main projects emphasized was the communication boxes, and the importance of getting those boxes up and running, or at the very least, getting the

DRAFT MINUTES – for approval at the 2/28/20 NTECC Meeting

subscriptions back online. Ms. Harjo has been involved with State PHP on several projects and has been asked to be on the Planning Committee to increase tribal participation. Ms. Harjo spoke to the Healthcare Coalition and changes to clinic contacts. The clinic contact has changed, and Ms. Harjo was able to connect with the Pyramid Lake Clinic. There is a tribal director's meeting next week. Ms. Harjo will keep in touch with the tribal directors. There was a request that came out of Idaho's Department of Public Health regarding Duck Valley's emergency preparedness efforts. Ms. Harjo also attended the recent VOAD meeting and has subsequently been invited to attend the Northern Nevada Access and Functional Needs Working Group meeting.

15. Overview of the Community Assessment for Public Health Emergency Response (CASPER) Tool

Emily Gould, Nevada Division of Public and Behavioral Health, provided the NTECC with an overview of the CASPER program. Highlights from the overview include the following:

- CASPER is a tool used to determine public health needs and emergency preparedness/response capabilities. It may be used prior to or following a disaster with the focus of pre-disaster assessment.
- The impact of CASPER allows rapid attainment of information about your communities that was previously unknown. Data can be generalized for the whole community, and an understanding of specific community needs can be obtained. Improved emergency response may be a result of this program, as it may support requests for funding or grant based projects in the area of recovery or preparedness.
- CASPER is conducted to help the communities it focuses on. All information is returned to the community and reports are released to the public.
- CASPER is conducted as follows in a typical sampling frame:
 - 30 clusters are randomly chosen, with seven households within each cluster.
 - The collection of 210 surveys is optimal, with the minimum being 168.
 - Surveys are analyzed and reports are created.
 - All information from the survey is returned to your community. Design modifications are possible as needed.
- The CASPER planning process includes designing the CASPER based on Centers for Disease Control (CDC) methodology/advisement, creation of goals and objectives, choice of clusters and households, survey design, community outreach & volunteer recruitment, and handout materials.
- Tribal statewide CASPER goal is for all tribes within Nevada to participate in the tool choosing to opt in or out to eliminate any appearance of required participation, and to consult with the CDC on the design process.
- Considerations of CASPER include survey design, logistics including transportation, communication, and safety measures. Additional considerations include the importance of obtaining volunteers, timelines, geographic boundaries, and travel distance.
- Next steps, should the CASPER be an appropriate assessment would be to coordinate with the CDC to design the CASPER, determine which tribes would like to participate, and determine a timeline. As a disclaimer, with the nature of a modified design, there may be a possibility that modified CASPERs would not be considered a CASPER by the CDC's guidelines. If this is the case, Ms. Gould indicated that she could work with the CDC to design a separate community preparedness assessment and proceed how the NTECC feels is best for each tribe.
- The role of Public Health Preparedness is support with the provision of guidance on coordinating assessment design with the CDC, survey creation, community outreach, conducting the CASPER, data analysis, and creation of the final report. The goal is

DRAFT MINUTES – for approval at the 2/28/20 NTECC Meeting

for Public Health Preparedness to do what the tribes would like done regarding this survey.

- For questions on the CASPER, please contact Emily Gould at 775-684-3216 or egould@health.nv.gov.

Don Pelt inquired how this would affect reservations with multiple communities or tribes with multiple jurisdictions or state lines. Ms. Gould indicated that this may be something to consult CDC on due to tribal sovereignty, but she will check on that for Mr. Pelt. Jon Bakkedahl, DEM/HS, presented concern for those tribes that may not have the required amount of people per required cluster. Per Ms. Gould, if that were the case, the survey could still be done though it may not be an official CASPER; in effect, it would be a preparedness assessment of which important information could be attained. Jackie Conway spoke to a survey that was done in a cluster that was chosen randomly in the Fallon tribal community, and the survey was successful. Ms. Gould indicated that although they did not get as many numbers as they were hoping for, it was still very successful in determining previously unknown information.

16. Tribal Updates

Chief Luna opened discussion for tribal updates that were provided to DEM/HS prior to the meeting per Nevada Open Meeting Law requirements. Following is a summary of the updates provided:

- **Fallon Paiute Shoshone Tribe (FPST)**

Jackie Conway spoke to FPST hosting the Computer-Aided Management of Emergency Operations (CAMEO) course that was funded by the U.S. Department of Transportation. CAMEO is free software that can track buildings, facilities, identifiable hazardous materials, material safety data sheets, ERG, and much more. There are over 5,400 different chemicals identified. The software can be used for planning and response capability. The hazard modeling program for CAMEO called Aloha also addressed plume modeling. CAMEO FM – download it! Ms. Conway also spoke to partnering with the American Red Cross (ARC) to install smoke detectors, and recent efforts resulting in 37 home installations totaling 91 detectors. Jill Hemenway, ARC, indicated that the ARC does have a program addressing smoke detectors, and there is another initiative underway in January 2020. This program is meant to address issues throughout Nevada, so whatever they can assist with, the ARC may be able to assist. Flyer information can be sent to DEM/HS for distribution. Ms. Conway spoke to Preliminary Disaster Mitigation grant funding and the need for tribal applications. Quality technical assistance is available. Chief Luna asked for clarification on whether Ms. Conway's request referred to the tribal set-aside for PDM, and per Ms. Conway, that is what she was referring to in her comments.

- **Pyramid Lake Paiute Tribe (PLPT)**

Don Pelt spoke to the PLPT support of the Storm Area 51 event response and offered praise for DEM/HS's coordination and involvement with this event. Even without the numbers expected, PLPT did provide a Type 1 Engine with crew of two individuals. The State Emergency Medical Service did perform an inspection of the engine to make it an intermediate vehicle as well. Mr. Pelt spoke to the 30-mile stretch the PLPT engine covered on the Extraterrestrial Highway during that event and being well-received at the response area. Mr. Pelt indicated that the State took this issue seriously. Chief Luna thanked Mr. Pelt for his comments and gave credit to the counties of Lincoln and Nye for their efforts, and to Mr. Pelt's offer to assist as well. Although the actual number of visitors expected did not result in the large number projected, the preparation was positive.

DRAFT MINUTES – for approval at the 2/28/20 NTECC Meeting

Chief Luna indicated that there will be a continued effort to reach out for tribal updates moving forward.

17. Public Comment

Chief Luna, DEM/HS, opened discussion for public comment for phone participants and those attending in Carson City. Jill Hemenway, ARC, spoke to the next Northern Nevada VOAD meeting scheduled for December 4, 2019. Participation from as many northern Nevada counties and tribes is welcomed. The ARC is performing a sheltering exercise on March 18, 2020, in Carson City and Douglas County, and Ms. Hemenway would be happy to present what that exercise looks like to the NTECC. They are using Fuji Park in Carson City, and the Senior Center in Gardnerville for the exercise. Ms. Hemenway would like to put information about this exercise on the next NTECC agenda if possible, should the meeting occur prior to the exercise. Don Pelt spoke to PLPT and RSIC participation of the Silver Crucible exercise this month. If any other tribes want to get involved, it would be a good chance to observe. No grant funding is available at this point for funding reimbursements, but it would be a good chance to observe this important exercise. Chief Luna spoke to the Silver Crucible exercise next week, and if attendees need information or want to participate, please get ahold of DEM/HS to coordinate participation with local jurisdictions or the State Emergency Operations Center. Crystal Harjo, DEM/HS, spoke to the Nevada Preparedness Summit scheduled in February 2020, and increasing tribal participation in that event. They are offering an elective pre-conference MGT 462 Community Planning for Economic Recovery course on February 10, 2020, and all links to this information were sent out yesterday through the DEM/HS listserv. This course is free, but the conference will have a registration fee. If you are an existing Nevada Emergency Preparedness Association (NEPA) member, the cost is \$25; non-member cost is \$125.00, but includes a NEPA membership. Reimbursement is being offered for one person per jurisdiction for travel. One of the speakers will be a former Emergency Manager from Arizona who will present on tribal preparedness and emergency management programs in Indian country. The speaker also has a background in fire and public health. The NTECC membership was instructed to get ahold of Ms. Harjo, Darlene Loff, or Matt Williams from DEM/HS for additional information. Chief Luna spoke to the rotation of this event in the state from north to south annually to increase participation. Chief Luna also thanked Jackie Conway for serving as the Co-Chair of the NTECC, and he is excited for her new role at DEM/HS. Chief Luna also thanked Harriett Parker for accepting her new role as Co-Chair moving forward, and he looks forward to working with her as well.

18. Adjourn

Chief Luna, DEM/HS, called for a motion to adjourn the meeting. A motion to adjourn was presented by Don Pelt and a second was provided by Tanya Reynolds. No discussion was presented on the motion by venue or telephone participants. All were in favor with no opposition. Meeting adjourned at 11:11 a.m.

Agenda Item #4

Nevada Tribal Emergency Coordinating Council (NTECC)			
Current Member Status - As of 2/21/20			
Marla Stanton	Member	Voting	Battle Mountain Band of the Te-Moak Tribe of Western Shoshone
Brent Hunter	Member	Voting	Duck Valley Shoshone Paiute Tribe
Marian Perez	Member	Voting	Duckwater Shoshone Tribe
Alfreida Jake	Member	Pending	Elko Band of the Te-Moak Tribe of Western Shoshone
Jill Perez	Member	Voting	Ely Shoshone Tribe
Richard Black	Member	Voting	Fallon Paiute-Shoshone Tribe
Duane Masters Sr.	Member	Voting	Fort McDermitt Paiute and Shoshone Tribe
Harriett Parker	Co-Chair	Voting	Las Vegas Paiute Tribe
Don Pelt	Member	Voting	Pyramid Lake Paiute Tribe
David Hunkup	Member	Voting	Reno Sparks Indian Colony
Tanya Reynolds	Member	Voting	South Fork Band of the Te-Moak Tribe of Western Shoshone
Sookaaki Charley	Member	Voting	Timbisha Shoshone Tribe
Tashina Jim	Member	Voting	Walker River Paiute Tribe
Non-Member Representatives			
Justin Luna	Co-Chair	Non-Voting	DPS Division of Emergency Management
Samantha Ladich	Legal Counsel	Non-Voting	Nevada Office of the Attorney General
Outstanding Tribal Designations - AS of 2/21/20			
Appointee	Position	Status	Tribal/Entity Designation
VACANT	Member	Pending	Confederated Tribes of Goshute
VACANT	Member	Pending	Fort Mojave Indian Tribe of CA, AZ & NV
VACANT	Member	Pending	Lovelock Paiute Tribe
VACANT	Member	Pending	Moapa Band of Paiutes
VACANT	Member	Pending	Summit Lake Paiute Tribe
VACANT	Member	Pending	Washoe Tribe of NV and CA - Carson Colony Council
VACANT	Member	Pending	Washoe Tribe of NV and CA - Dresslerville Community Council
VACANT	Member	Pending	Washoe Tribe of NV and CA - Stewart Community Council
VACANT	Member	Pending	Washoe Tribe of NV and CA - Woodfords Colony Council
VACANT	Member	Pending	Wells Band Council
VACANT	Member	Pending	Winnemucca Indian Colony
VACANT	Member	Pending	Yerington Paiute Tribe
VACANT	Member	Pending	Yomba Shoshone Tribe - <i>Formerly John Brady; he has resigned from the NTECC - New designation/appointment pending</i>

Agenda Item #5F

STATE OF NEVADA
LEGISLATIVE COUNSEL BUREAU

LEGISLATIVE BUILDING
401 S. CARSON STREET
CARSON CITY, NEVADA 89701-4747
Fax No.: (775) 684-6600



LEGISLATIVE COMMISSION (775) 684-6800
NICOLE J. CANNIZZARO, *Senator, Chair*
Rick Combs, *Director, Secretary*

INTERIM FINANCE COMMITTEE (775) 684-6821
MAGGIE CARLTON, *Assemblywoman, Chair*
Cindy Jones, *Fiscal Analyst*
Mark Krmpotic, *Fiscal Analyst*

RICK COMBS, *Director*
(775) 684-6800

BRENDA J. ERDOES, *Legislative Counsel* (775) 684-6830
DANIEL L. CROSSMAN, *Legislative Auditor* (775) 684-6815
MICHAEL J. STEWART, *Research Director* (775) 684-6825

MEETING NOTICE AND AGENDA

- Name of Organization: Committee to Conduct an Interim Study Concerning Wildfires
([Assembly Concurrent Resolution 4, File 46](#))
- Date and Time of Meeting: Tuesday, January 7, 2020
9:30 a.m.
- Place of Meeting: Grant Sawyer State Office Building, Room 4401
555 East Washington Avenue
Las Vegas, Nevada
- Note: Some members of the Committee may be attending the meeting and other persons may observe the meeting and provide testimony through a simultaneous videoconference conducted at the following location:

Legislative Building, Room 3138
401 South Carson Street
Carson City, Nevada

If you cannot attend the meeting, you can listen or view it live over the Internet. The address for the Nevada Legislature website is <http://www.leg.state.nv.us>. Click on the link "[Calendar of Meetings/View](#)."

We are pleased to make reasonable accommodations for members of the public with a disability who wish to attend the meeting. If accommodations for the meeting are necessary, please notify the Research Division of the Legislative Counsel Bureau, in writing, at the Legislative Building, 401 South Carson Street, Carson City, Nevada 89701-4747, or call the Research Division at (775) 684-6825 as soon as possible.

Minutes of this meeting will be produced in summary format. Please provide the research policy assistant with electronic or written copies of testimony and visual presentations if you wish to have complete versions included as exhibits with the minutes.

Items on this agenda may be taken in a different order than listed. Two or more agenda items may be combined for consideration. An item may be removed from this agenda or discussion relating to an item on this agenda may be delayed at any time.

- I. Opening Remarks
Assemblywoman Heidi Swank, Chair
- II. Public Comment
(Because of time considerations, each speaker offering comments during the period for public comment will be limited to not more than 3 minutes. A person may also have comments added to the minutes of the meeting by submitting them in writing either in addition to testifying or in lieu of testifying. Written comments may be submitted in person or by email, facsimile, or mail before, during, or after the meeting.)

- For Possible Action** III. Review of the Duties and Responsibilities of the Committee to Conduct an Interim Study Concerning Wildfires
Jann Stinnesbeck, Senior Policy Analyst, Research Division, Legislative Counsel Bureau
- For Possible Action** IV. Discussion of Wildfire Management Programs and Activities in Nevada
- For Possible Action** A. Overview of Activities to Reduce Wildfire Fuels by the Division of Forestry of the State Department of Conservation and Natural Resources
Kacey KC, State Forester Firewarden, Division of Forestry, State Department of Conservation and Natural Resources (DCNR)
- For Possible Action** B. Overview of Activities to Reduce Wildfire Fuels by the Bureau of Land Management (BLM), United States Department of the Interior (DOI)
Paul Petersen, Fire Management Officer, Division of Fire and Aviation, Nevada State Office, BLM, DOI
- For Possible Action** C. Presentation on Targeted and Outcome-Based Grazing Projects of the United States Forest Service of the U.S. Department of Agriculture
Bill Dunkelberger, Forest Supervisor, Humboldt-Toiyabe National Forest, U.S. Forest Service, U.S. Department of Agriculture
- For Possible Action** D. Discussion of Federal and State Activities Related to the Restoration and Rehabilitation of Vegetation of Wildlife Habitat
Ray Dotson, State Conservationist, State Conservationist Office, Natural Resources Conservation Service Nevada, U.S. Department of Agriculture
Alan Jenne, Administrator of Habitat, Nevada's Department of Wildlife
- For Possible Action** E. Overview of the Noxious Weed Program of the State Department of Agriculture
Jennifer Ott, Director, State Department of Agriculture
- For Possible Action** F. Overview of the Nevada Network of Fire Adapted Communities Program
Kacey KC, State Forester Firewarden, Division of Forestry, DCNR
- V. Public Comment
(Because of time considerations, each speaker offering comments during the period for public comment will be limited to not more than 3 minutes. A person may also have comments added to the minutes of the meeting by submitting them in writing either in addition to testifying or in lieu of testifying. Written comments may be submitted in person or by email, facsimile, or mail before, during, or after the meeting.)
- VI. Adjournment

Notice of this meeting was posted in the following Carson City locations: Blasdel Building, 209 East Musser Street; City Hall, 201 North Carson Street; and the Legislative Building, 401 South Carson Street.

Notice of this meeting was posted in the following Las Vegas location: Legislative Counsel Bureau, Las Vegas Office, Grant Sawyer State Office Building, 555 East Washington Avenue.

Notice of this meeting was hand delivered for posting to the following Carson City location: Capitol Press Corps, Basement, Capitol Building, 101 North Carson Street.

Notice of this meeting was faxed or emailed for posting to the following Las Vegas locations: Clark County Government Center, Administrative Services, 500 South Grand Central Parkway; and Capitol Police, Grant Sawyer State Office Building, 555 East Washington Avenue.

Notice of this meeting was posted on the Internet through the Nevada Legislature's website at www.leg.state.nv.us.

Supporting public material provided to Committee members for this meeting may be requested from Christina Harper, Assistant Manager of Research Policy Assistants, Research Division, Legislative Counsel Bureau, at (775) 684-6825 and is/will be available at the following locations: Meeting locations and the Nevada Legislature's website at www.leg.state.nv.us.

Agenda Item #5F

Committee to Conduct an Interim Study Concerning Wildfires Update

The 2019 Legislature approved the Committee to Conduct an Interim Study Concerning Wildfires through the passage of Assembly Concurrent Resolution (ACR) 4. Pursuant to ACR 4, the Committee is required to study Methods of reducing wildfire fuels; issues related to early responses to wildfires; and the economic impact of wildfires on the state and local communities.

The Legislative Commission budget approved to hold four meetings and the work needs to be completed by the end of June 2020. The meetings are video conferenced between the Legislative Building in Carson City and Las Vegas, beginning at 9:30 a.m.

The first Meeting was held on January 7 and the remaining meetings will be held March 17, May 12, June 12.

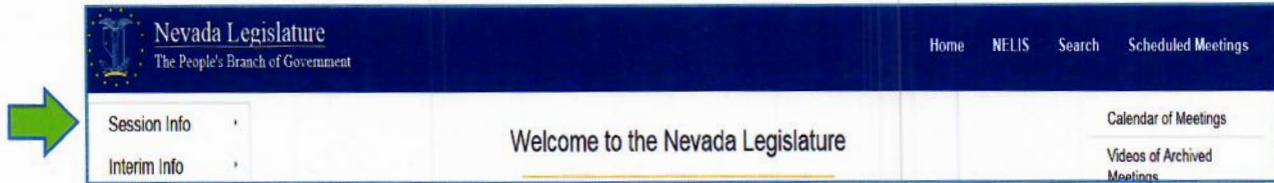
If you would like to track the Committee I attached a form on how to track an interim committee and the Agenda from the 1st Meeting.

In order to implement a study that provides us with information necessary to make statewide recommendations, **any suggestions concerning potential agenda items or presenters for any of the topics are welcomed.** I reached out by e-mail to Brent Hunter, Don Pelt and Daniel Thayer if they would like to provide a presentation at one of the meetings to discuss any concerns regarding the impact of wildfires on their community from a Tribal perspective. Any suggestions are welcomed so please feel free to contact me. Thank you.

Respectfully,
Jackie Conway
Emergency Management Tribal Coordinator
(775) 687-0381
jconway@dps.state.nv.us

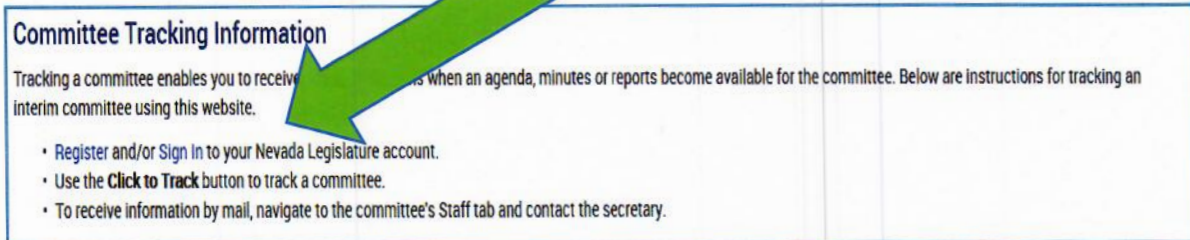
INTERESTED IN TRACKING INTERIM COMMITTEES?

1. Open Nevada Legislative website (leg.state.nv.us) and choose **Interim Info**.

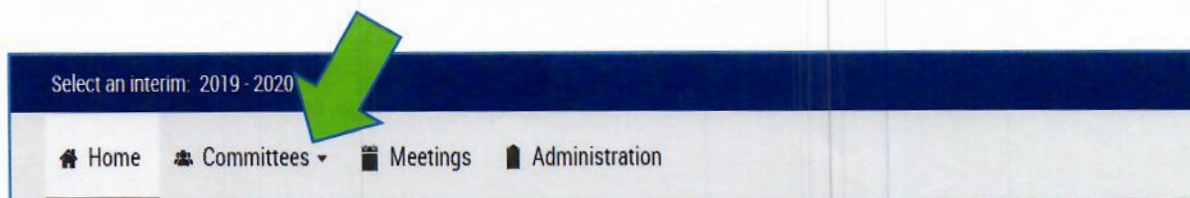


2. Choose **2019-2020 Interim**.

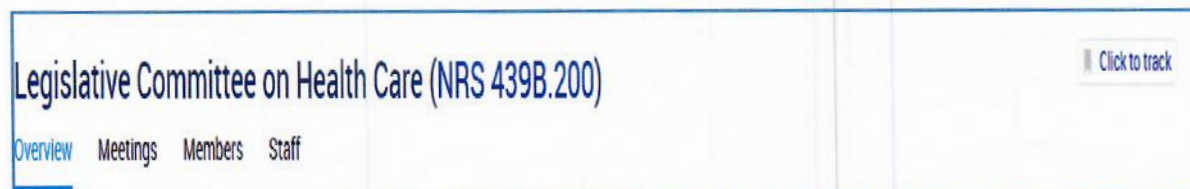
3. **Sign in or Register** for a Nevada Legislature account.



4. Choose Interim Committees and then click on the Committee tab. Click on Committee List.

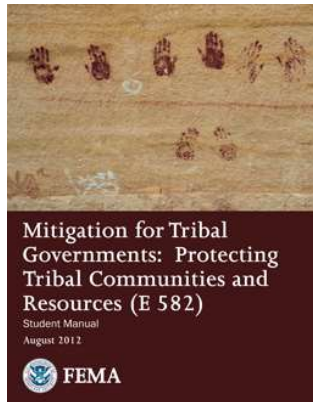


5. Select **Click to Track**. You may track more than one committee.



E0582 Mitigation for Tribal Governments

Course Purpose: To give Tribal governments a foundation for reducing or preventing potential losses from natural or other hazards.



This 4-day course provides tribal representatives with an understanding of reducing potential losses from natural or other hazards using mitigation opportunities and techniques, examples of mitigation success stories, and an overview of available FEMA Mitigation Programs. Primary emphasis is on helping tribal emergency managers and planners identify mitigation planning requirements and identifying mitigation opportunities to protect their communities.

2.4 CEUs

NOTE: E/L580 is a mandatory prerequisite.

TARGET AUDIENCE: tribal emergency managers and tribal community planners, tribal leaders.

Can be field delivered as L0582

[E0582 Sample Agenda - PDF 119KB](#)

**The Department of Homeland Security (DHS)
Notice of Funding Opportunity (NOFO)
Fiscal Year (FY) 2020 Emergency Management Performance Grant Program
(EMPG)**

NOTE: If you are going to apply for this funding opportunity and have **not** obtained a Data Universal Numbering System (DUNS) number and/or **are not** currently registered in the System for Award Management (SAM), please take immediate action to obtain a DUNS Number, if applicable, and then to register immediately in SAM. It may take 4 weeks or more after you submit your SAM registration before your registration is active in SAM, then an additional 24 hours for [Grants.gov](http://www.grants.gov) to recognize your information. Information on obtaining a DUNS number and registering in SAM is available from Grants.gov at: <http://www.grants.gov/web/grants/register.html>. Detailed information regarding DUNS and SAM is also provided in Section D of this NOFO, subsection, Content and Form of Application Submission.

A. Program Description

1. Issued By

U.S. Department of Homeland Security (DHS), Federal Emergency Management Agency (FEMA), Grant Programs Directorate (GPD)

2. Assistance Listings (formerly Catalog of Federal Domestic Assistance (CFDA) Number)

97.042

3. Assistance Listings Title (formerly CFDA Title)

Emergency Management Performance Grant Program (EMPG)

4. Funding Opportunity Title

Emergency Management Performance Grant Program

5. Funding Opportunity Number

DHS-20-GPD-042-01-01 – EMPG Region 1
DHS-20-GPD-042-02-01 - EMPG Region 2
DHS-20-GPD-042-03-01 - EMPG Region 3
DHS-20-GPD-042-04-01 - EMPG Region 4
DHS-20-GPD-042-05-01 - EMPG Region 5
DHS-20-GPD-042-06-01 - EMPG Region 6
DHS-20-GPD-042-07-01 - EMPG Region 7
DHS-20-GPD-042-08-01 - EMPG Region 8
DHS-20-GPD-042-09-02 - EMPG Region 9
DHS-20-GPD-042-10-01 - EMPG Region 10

6. Authorizing Authority for Program

Section 662 of the Post-Katrina Emergency Management Reform Act of 2006 (PKEMRA), as amended, (Pub. L. No. 109-295) (6 U.S.C. § 762); the Robert T. Stafford Disaster Relief and Emergency Assistance Act, as amended (Pub. L. No. 93-288) (42 U.S.C. §§ 5121 et seq.); the Earthquake Hazards Reduction Act of 1977, as amended (Pub. L. No. 95-124) (42 U.S.C. §§ 7701 et seq.); and the National Flood Insurance Act of 1968, as amended (Pub. L. No. 90448) (42 U.S.C. §§ 4001 et seq.).

7. Appropriation Authority for Program

Department of Homeland Security Appropriations Act, 2020 (Pub. L. No. 116-93)

8. Announcement Type

Formula

9. Program Overview, Objectives, and Priorities

Overview

The Fiscal Year (FY) 2020 Emergency Management Performance Grant (EMPG) Program is one of the grant programs that constitute the Department of Homeland Security (DHS)/ Federal Emergency Management Agency’s (FEMA’s) focus on all-hazards emergency preparedness. These grant programs are part of a comprehensive set of measures authorized by Congress and implemented by DHS. Among the five basic homeland security missions noted in the 2018 DHS Quadrennial Homeland Security Review, EMPG supports the goal to Strengthen National Preparedness and Resilience. The 2018-2022 FEMA Strategic Plan creates a shared vision for the field of emergency management and sets an ambitious, yet achievable, path forward to unify and further professionalize emergency management across the country. The EMPG Program supports the goals of Building a Culture of Preparedness and Readyng the Nation for Catastrophic Disasters. We invite all stakeholders and partners to also adopt these priorities and join us in building a more prepared and resilient nation.

Objectives

The FY 2020 EMPG program will provide funds to assist State, local, tribal, and territorial emergency management agencies to implement the National Preparedness System and the National Preparedness Goal (the Goal) of a secure and resilient nation. **Priorities**

All EMPG applicants must develop and submit a Work Plan as described in the “EMPG Work Plan” section of the Preparedness Grants Manual. All EMPG Work Plans will require final approval by the Regional Administrator. Prior to submission of the EMPG Work Plan, the applicant must work with the Regional Administrator or designated FEMA Regional Program Manager to ensure that regional or state priorities are properly addressed in the EMPG Work Plan. In general, these priorities will address the “persistent preparedness challenges” identified in the National Preparedness Report (NPR), which evaluates progress in building, sustaining, and delivering the core capabilities outlined in the National Preparedness Goal. This analysis provides a national

perspective on critical preparedness trends for whole community partners to use to inform program priorities, allocate resources, and communicate with stakeholders about issues of shared concern. The NPR can be found at <http://www.fema.gov/national-preparedness-report>.

A goal of this approach will be funding projects that address areas for improvement identified through lessons-learned from recent disasters, including:

- 10. Logistics – Distribution Management Planning;
- 11. Evacuation Plan/Annex;
- 12. Disaster Financial Management;
- 13. Catastrophic Disaster Housing; and
- 14. Resilient Communications.

EMPG funding also can be used to assist emergency managers with implementing community lifelines. The lifelines concept simplifies incident information to provide decision makers with clearly identified impacts to critical community services and root causes that inform response and recovery actions. The [Community Lifelines Implementation Toolkit](#) provides whole community partners the information and resources to understand lifelines and to coordinate with entities using lifelines. The toolkit serves as basic guidance for how to implement the lifeline construct during incident response.

The table below provides a high-level breakdown of priority areas, showing both the core capabilities enhanced and lifelines supported, as well as examples of project types for each area. A detailed description of allowable investments for each project type is included in the [Preparedness Grants Manual](#).

FY 2020 EMPG Funding Priorities

Priority Area	Core Capabilities	Lifelines	Example Project Types
Logistics – Distribution Management Planning	<ul style="list-style-type: none"> • Logistics and Supply Chain Management • Supply Chain Integrity and Security 	<ul style="list-style-type: none"> • Food, Water and Shelter • Health and Medical • Transportation 	<ul style="list-style-type: none"> • Development of a Distribution Management Plan which addresses: <ul style="list-style-type: none"> ○ State/local staging site plans ○ State/local commodity point of distribution site plans ○ Staging and Point of Distribution staffing strategies/plans ○ Transportation strategies/plans ○ Resource sourcing strategies/plans

Priority Area	Core Capabilities	Lifelines	Example Project Types
Evacuation Plan/Annex	<ul style="list-style-type: none"> • Planning • Risk Management for Protection Programs & Activities • Risk & Disaster Resilience Assessment • Threats and Hazards Identification • Operational Coordination • Long-Term Vulnerability Reduction 	<ul style="list-style-type: none"> • Transportation 	<ul style="list-style-type: none"> • Identify plausible, worst case threats and hazards • Identify planning gaps and capability shortfalls • Identify access and functional needs considerations • Identify animal evacuation considerations • Identify embarkation/debarkation sites • Development of phased-zone evacuation approach
Disaster Financial Management	<ul style="list-style-type: none"> • Planning • Risk management for protection programs & activities • Risk & disaster resilience assessment • Community resilience • Economic recovery 	<ul style="list-style-type: none"> • Communications 	<ul style="list-style-type: none"> • Development of plan for the sequencing of Federal, nonprofit, and State disaster programs • Development of Disaster Financial Management Plan
Catastrophic Disaster Housing	<ul style="list-style-type: none"> • Housing • Planning • Situational assessment • Physical protective measures 	<ul style="list-style-type: none"> • Food, Water and Shelter 	<ul style="list-style-type: none"> • Development of State-led disaster housing task force plan • Establishment of State Disaster Recovery Coordinator • Completion of State Housing Strategy template

Priority Area	Core Capabilities	Lifelines	Example Project Types
Resilient Communications	<ul style="list-style-type: none"> • Operational Communications • Planning • Public Information and Warning • Operational Coordination • Intelligence and Information Sharing • Cybersecurity • Physical Protective Measures • Long-Term Vulnerability Reduction • Risk and Disaster Resilience Assessment • Threats and Hazards Identification • Infrastructure Systems 	<ul style="list-style-type: none"> • Communications 	<ul style="list-style-type: none"> • Development of Statewide Communication Interoperability Plans (SCIP), Tactical Interoperable Communications Plans (TICP), and Standard Operating Procedures (SOPs) that address continuity and recovery of emergency communication systems • Conducting of risk and vulnerability assessments associated with emergency communications systems, to include cybersecurity risks. • Conducting of National Incident Management System (NIMS) compliant training, exercise, and evaluation activities to test emergency communications capabilities, to include testing of resiliency and continuity of communications. • Physical hardening of infrastructure systems and support emergency communications.
Implementation of Community Lifelines	<ul style="list-style-type: none"> • Planning • Situational Assessment • Operational Coordination • Community Resilience 	<ul style="list-style-type: none"> • Safety and Security • Food, Water and Shelter • Health and Medical • Energy • Communications • Transportation • Hazardous Materials 	<ul style="list-style-type: none"> • Hiring or contracting of planners to update emergency operations plans to address community lifelines • Training of emergency managers on community lifelines concept and use • Exercises to measure effectiveness of community lifelines implementation.

DHS/FEMA also requires EMPG recipients to complete a THIRA/SPR and to prioritize grant funding to support closing capability gaps or sustaining capabilities that address the Region-specific priorities. Additional information on the THIRA/SPR process, including other National Preparedness System (NPS) tools and resources, can be found at <https://www.fema.gov/national-preparedness-system>.

10. Performance Metrics

Performance metrics for this program are as follows:

- Percentage improvement in Stakeholder Preparedness Review (SPR) capabilities against Threat and Hazard Identification and Risk Assessment (THIRA) targets

B. Federal Award Information

Award Amounts, Important Dates, and Extensions

Available Funding for the EMPG: \$355,100,000

EMPG awards are based on section 662 of the *Post-Katrina Emergency Management Reform Act of 2006*, as amended, (6 U.S.C. § 762). All 50 States, the District of Columbia, and Puerto Rico receive a base amount of 0.75 percent of the total available funding appropriated for the EMPG program. Four territories (American Samoa, Guam, the Commonwealth of the Northern Mariana Islands, and the U.S. Virgin Islands) receive a base amount of 0.25 percent of the total available funding appropriated for the EMPG program. The remaining balance of the funds appropriated for the EMPG funds are distributed on a population-share basis. Pursuant to Article X of the Federal Programs and Services Agreement of the *Compact of Free Association Act* (Pub. L. No. 108-188), a set amount of funds (\$100,000 total) are also available from the Disaster Relief Fund for the Federated States of Micronesia and for the Republic of the Marshall Islands.

FY 2020 EMPG Allocations

FY 2020 Emergency Management Performance Grant (EMPG) Funding Allocations			
State/Territory	Allocation	State/Territory	Allocation
Alabama	\$5,810,021	New Hampshire	\$3,535,345
Alaska	\$3,132,104	New Jersey	\$8,364,279
Arizona	\$7,334,955	New Mexico	\$4,008,526
Arkansas	\$4,599,731	New York	\$15,150,401
California	\$28,026,736	North Carolina	\$9,395,157
Colorado	\$6,359,228	North Dakota	\$3,151,693
Connecticut	\$4,951,179	Ohio	\$10,166,130
Delaware	\$3,287,592	Oklahoma	\$5,202,614
District of Columbia	\$3,115,544	Oregon	\$5,370,008
Florida	\$16,449,788	Pennsylvania	\$10,880,531
Georgia	\$9,478,184	Rhode Island	\$3,342,540
Hawaii	\$3,571,396	South Carolina	\$5,967,634
Idaho	\$3,809,678	South Dakota	\$3,230,393
Illinois	\$10,796,972	Tennessee	\$7,046,379
Indiana	\$6,984,140	Texas	\$21,275,940
Iowa	\$4,687,846	Utah	\$4,720,513
Kansas	\$4,532,655	Vermont	\$3,063,060
Kentucky	\$5,530,451	Virginia	\$8,141,739
Louisiana	\$5,646,719	Washington	\$7,550,758
Maine	\$3,525,395	West Virginia	\$3,812,940
Maryland	\$6,543,427	Wisconsin	\$6,400,118
Massachusetts	\$7,087,032	Wyoming	\$3,034,025
Michigan	\$9,073,402	Puerto Rico	\$4,712,641
Minnesota	\$6,282,771	U.S. Virgin Islands	\$955,950
Mississippi	\$4,572,991	American Samoa	\$919,683
Missouri	\$6,602,323	Guam	\$995,439
Montana	\$3,348,585	Northern Mariana Islands	\$920,700
Nebraska	\$3,904,262	Republic of the Marshall Islands	\$50,000
Nevada	\$4,639,757	Federated States of Micronesia	\$50,000
Total			\$355,100,000

Period of Performance:

36 months

Extensions to the period of performance are allowed. For additional information on period of performance extensions, please refer to the [Preparedness Grants Manual](#). DHS/FEMA anticipates the overall period of performance for awards issued under this NOFO will be up to 84 months, encompassing five program years. DHS/FEMA anticipates that it will fund a program year every twelve months, and that the period of performance for the funds provided in each program year will be three years. The funds provided under this announcement will be for the first program year, which will have a three-year period of performance. Annual funding for program years two through five is not currently available and will only be provided subject to the availability of funds. Should funding become available for additional

program years, applicants will be required to submit an application and proposed budget for approval by DHS/FEMA before any additional funds are awarded.

Projected Period of Performance Start Date(s): October 1, 2019

Projected Period of Performance End Date(s): September 30, 2022

Funding Instrument Type: Grant

C. Eligibility Information

1. Eligible Applicants

State or territorial governments (the State Administrative Agency [SAA] or the State's Emergency Management Agency [EMA]).

2. Applicant Eligibility Criteria

All 56 States and territories, as well as the Republic of the Marshall Islands and the Federated States of Micronesia (collectively "state or territory"), are eligible to apply for FY 2020 EMPG funds. Either the SAA or the EMA is eligible to apply directly to FEMA for EMPG funds on behalf of each state or territory. However, only one application will be accepted from each state or territory.

3. Other Eligibility Criteria

Emergency Management Assistance Compact (EMAC) Membership

In support of the Goal, EMPG recipients must belong to, be located in, or act as an EMAC temporary member state, except for American Samoa, the Federated States of Micronesia, the Republic of the Marshall Islands, and the Commonwealth of the Northern Mariana Islands, which are not currently subject to these requirements. All assets supported in part or entirely with FY 2020 EMPG funding must, where applicable, be readily deployable to support emergency or disaster operations per existing EMAC agreements.

National Incident Management System (NIMS)

Prior to allocation of any Federal preparedness awards in FY 2020, recipients must ensure and maintain adoption and implementation of the National Incident Management System (NIMS). Please see the [Preparedness Grants Manual](#) for more information on NIMS.

4. Cost Share or Match

The FY 2020 EMPG program has a cost-share requirement. The recipient contribution can be cash (hard match) or third-party in-kind (soft match). Eligible EMPG program applicants shall agree to make available non-Federal funds to carry out an EMPG award in amount not less than 50 percent of the total project cost. In other words, the Federal share applied toward the EMPG budget shall not exceed 50 percent of the total budget as submitted in the application and approved in the award. If the total project ends up

costing more, the recipient is responsible for any additional costs; if the total project ends up costing less, the recipient may owe FEMA an amount required to ensure that the Federal cost share is not in excess of 50 percent. A State must at least equally match (cash or third party in-kind) the Federal contribution pursuant to sections 611(j) and 613(a) of the *Robert T. Stafford Disaster Relief and Emergency Assistance Act* (Pub. L. No. 93-288), as amended, (42 U.S.C. §§ 5121 *et seq.*). Unless otherwise authorized by law, Federal funds cannot be matched with other Federal funds. The recipient's contribution should be specifically identified. These non-Federal contributions have the same eligibility requirements as the Federal share.

DHS/FEMA administers cost-matching requirements in accordance with 2 C.F.R. § 200.306. To meet matching requirements, the recipient contributions must be verifiable, reasonable, allowable, allocable, necessary under the grant program, and in compliance with all applicable Federal requirements and regulations.

For example, if the Federal award were at a 50 percent cost share and the total approved budget cost was \$100,000, then:

Federal share is 50 percent of \$100,000 = \$50,000
Recipient share is 50 percent of \$100,000 = \$50,000

However, with this example, if the total cost ended up being \$120,000, the Federal share would remain at 50 percent of the total approved budget at the time of application of \$100,000. If the total cost ended up being \$80,000, then the 50 percent Federal share would decrease to \$40,000, and the recipient cost share would be \$40,000.

In accordance with 48 U.S.C. § 1469a, cost-match requirements are waived for the insular areas of the U.S. territories of American Samoa, Guam, the U.S. Virgin Islands, the Federated States of Micronesia, the Commonwealth of the Northern Mariana Islands, and the Republic of the Marshall Islands.

D. Application and Submission Information

1. Key Dates and Times

- a. Application Start Date:** February 14, 2020
- b. Application Submission Deadline:** April 15, 2020 5 p.m. ET

All applications **must** be received by the established deadline. The Non-Disaster (ND) Grants System has a date stamp that indicates when an application is submitted. Applicants will receive an electronic message confirming receipt of the full application. **DHS/FEMA will not review applications that are received after the deadline or consider these late applications for funding.** DHS/FEMA may, however, extend the application deadline on request for any applicant who can demonstrate that good cause exists to justify extending the deadline. Good cause for an extension may include technical problems outside of an applicant's control that

prevent submission of the application by the deadline or other exigent or emergency circumstances.

Applicants experiencing technical issues must notify the FEMA Regional Program Analyst prior to the application deadline. For FEMA regional contact information, reference <https://www.fema.gov/fema-regional-contacts> or contact the Centralized Scheduling and Information Desk (CSID) by phone at (800) 368-6498 or by e-mail at askcsid@fema.gov, Monday through Friday, 9 a.m. – 5 p.m. ET.

- c. **Anticipated Funding Selection Date:** No later than July 1, 2020
- d. **Anticipated Award Date:** No later than September 30, 2020

Event	Suggested Deadline for Completion
Obtaining DUNS Number	March 1, 2020
Obtaining a valid EIN	March 1, 2020
Updating SAM registration	March 1, 2020
Starting application in Grants.gov	March 1, 2020
Completing the initial application in Grants.gov	April 8, 2020
Submitting final application in ND Grants	April 15, 2020 5 P.M. ET

2. Agreeing to Terms and Conditions of the Award

By submitting an application, applicants agree to comply with the requirements of this NOFO and the terms and conditions of the award, should they receive an award.

3. Address to Request Application Package

See the [Preparedness Grants Manual](#) for information on requesting and submitting an application. Hard copies of the NOFO are not available. Applications will be processed through the [Grants.gov](https://www.grants.gov) portal and [ND Grants](https://www.ndgrants.gov).

4. Steps Required to Submit an Application, Unique Entity Identifier, and System for Award Management (SAM)

To apply for an award under this program, all applicants must:

- a. Apply for, update, or verify their Data Universal Numbering System (DUNS) Number from Dun & Bradstreet (D&B) and Employer ID Number (EIN)
- b. In the application, provide a valid Data Universal Numbering System DUNS number, which is currently the unique entity identifier;
- c. Have an account with [login.gov](https://www.login.gov);
- d. Register for, update, or verify their SAM account and ensure the account is active before submitting the application;
- e. Create a [Grants.gov](https://www.grants.gov) account;
- f. Add a profile to a [Grants.gov](https://www.grants.gov) account;

- g. Establish an Authorized Organizational Representative (AOR) in Grants.gov;
- h. Submit an initial application in [Grants.gov](#);
- i. Submit the final application in the [ND Grants](#) system; and
- j. Continue to maintain an active SAM registration with current information at all times during which it has an active federal award or an application or plan under consideration by a federal awarding agency.

Applicants are advised that DHS may not make a federal award until the applicant has complied with all applicable DUNS and SAM requirements. Therefore, an applicant's SAM registration must be active not only at the time of application, but also during the application review period and when DHS is ready to make a federal award. Further, as noted above, an applicant's or recipient's SAM registration must remain active for the duration of an active federal award. If an applicant's SAM registration is expired at the time of application, expires during application review, or expires any other time before award, DHS may determine that the applicant is not qualified to receive a federal award and use that determination as a basis for making a federal award to another applicant.

5. Electronic Delivery

DHS/FEMA is participating in the [Grants.gov](#) initiative to provide the grant community with a single site to find and apply for grant funding opportunities. DHS/FEMA requires applicants to submit their initial applications online through [Grants.gov](#) and final applications through [ND Grants](#).

6. How to Register to Apply through Grants.gov

- a. *Instructions:* Registering in [Grants.gov](#) is a multi-step process. Read the instructions below about registering to apply for DHS funds. Applicants should read the registration instructions carefully and prepare the information requested before beginning the registration process. Reviewing and assembling the required information before beginning the registration process will alleviate last-minute searches for required information.

The registration process can take up to four weeks to complete. Therefore, registration should be done in sufficient time to ensure it does not impact your ability to meet required application submission deadlines.

Organizations must have a Data Universal Numbering System (DUNS) Number, active System for Award Management (SAM) registration, and [Grants.gov](#) account to apply for grants. If individual applicants are eligible to apply for this grant funding opportunity, then you may begin with step 3, Create a [Grants.gov](#) account, listed below.

Creating a [Grants.gov](#) account can be completed online in minutes, but DUNS and SAM registrations may take several weeks. Therefore, an organization's registration should be done in sufficient time to ensure it does not impact the entity's ability to meet required application submission deadlines. Complete organization instructions can be found on Grants.gov here:

<https://www.grants.gov/web/grants/applicants/organization-registration.html>

- 1) *Obtain a DUNS Number:* All entities applying for funding, including renewal funding, must have a DUNS number from Dun & Bradstreet (D&B). Applicants must enter the DUNS number in the data entry field labeled "Organizational DUNS" on the SF-424 form.

For more detailed instructions for obtaining a DUNS number, refer to:

<https://www.grants.gov/web/grants/applicants/organization-registration/step-1-obtain-duns-number.html>

- 2) *Register with SAM:* All organizations applying online through Grants.gov must register with the System for Award Management (SAM). Failure to register with SAM will prevent your organization from applying through Grants.gov. SAM registration must be renewed annually.

For more detailed instructions for registering with SAM, refer to:

<https://www.grants.gov/web/grants/applicants/organization-registration/step-2-register-with-sam.html>

- 3) *Create a Grants.gov Account:* The next step is to register an account with Grants.gov. Follow the on-screen instructions or refer to the detailed instructions here: <https://www.grants.gov/web/grants/applicants/registration.html>
- 4) *Add a Profile to a Grants.gov Account:* A profile in Grants.gov corresponds to a single applicant organization the user represents (i.e., an applicant) or an individual applicant. If you work for or consult with multiple organizations and have a profile for each, you may log in to one Grants.gov account to access all of your grant applications. To add an organizational profile to your Grants.gov account, enter the DUNS Number for the organization in the DUNS field while adding a profile.

For more detailed instructions about creating a profile on Grants.gov, refer to:

<https://www.grants.gov/web/grants/applicants/registration/add-profile.html>

- 5) *EBiz POC Authorized Profile Roles:* After you register with Grants.gov and create an Organization Applicant Profile, the organization applicant's request for Grants.gov roles and access is sent to the EBiz POC. The EBiz POC will then log in to Grants.gov and authorize the appropriate roles, which may include the AOR role, thereby giving you permission to complete and submit applications on behalf of the organization. You will be able to submit your application online any time after you have been assigned the AOR role.

For more detailed instructions about creating a profile on Grants.gov, refer to:

<https://www.grants.gov/web/grants/applicants/registration/authorize-roles.html>

- 6) *Track Role Status:* To track your role request, refer to: <https://www.grants.gov/web/grants/applicants/registration/track-role-status.html>

7) *Electronic Signature*: When applications are submitted through Grants.gov, the name of the organization applicant with the AOR role that submitted the application is inserted into the signature line of the application, serving as the electronic signature. The EBiz POC **must** authorize people who are able to make legally binding commitments on behalf of the organization as a user with the AOR role; **this step is often missed, and it is crucial for valid and timely submissions.**

7. How to Submit an Application to DHS via Grants.gov

See the Preparedness Grants Manual for information on Requesting and submitting an application.

8. Timely Receipt Requirements and Proof of Timely Submission

As application submission is a two-step process, the applicant with the Authorized Organization Representative (AOR) role who submitted the application in [Grants.gov](https://www.grants.gov) will receive an acknowledgement of receipt, a tracking number (GRANTXXXXXXXXXX) from [Grants.gov](https://www.grants.gov), and an Agency Tracking Number (EMX-2020 -XX-XXXX) with the successful transmission of their initial application. This notification does not serve as proof of timely submission, as the application is not complete until it is submitted in [ND Grants](https://www.ndgrants.gov). All applications must be received in [ND Grants](https://www.ndgrants.gov) by 5 p.m. Eastern Time on April 15, 2020. Proof of timely submission is automatically recorded by ND Grants. An electronic date/time stamp is generated within the system when the application is successfully received by [ND Grants](https://www.ndgrants.gov). Additionally, the applicant(s) listed as contacts on the application will receive a system-generated email to confirm receipt.

9. Content and Form of Application Submission

Applicants must first submit their initial application on [Grants.gov](https://www.grants.gov) and the final submission in [ND Grants](https://www.ndgrants.gov).

Please see the [Preparedness Grants Manual](#) for additional information and detailed steps on how to submit an application.

10. Other Submission Requirements

Unique Entity Identifier and System for Award Management (SAM)

For information on the Unique Entity Identifier and SAM, see the [Preparedness Grants Manual](#).

Electronic Delivery

DHS/FEMA is participating in the [Grants.gov](https://www.grants.gov) initiative to provide the grant community with a single site to find and apply for grant funding opportunities. DHS/FEMA requires applicants to submit their initial applications online through [Grants.gov](https://www.grants.gov) and final applications through [ND Grants](https://www.ndgrants.gov).

How to Register to Apply through Grants.gov

Please see the [Preparedness Grants Manual](#) for information on requesting and submitting an application.

How to Submit an Initial Application to DHS/FEMA via Grants.gov

Please see the [Preparedness Grants Manual](#) for information on requesting and submitting an application.

Submitting the Final Application in the Non-Disaster Grants System ([ND Grants](#))

After submitting the initial application in [Grants.gov](#), eligible applicants will be notified by DHS/FEMA and asked to proceed with submitting their complete application package in [ND Grants](#). Applicants can register early with [ND Grants](#) and are encouraged to begin their [ND Grants](#) registration at the time of this announcement or at the latest, seven days before the application deadline. Early registration will allow applicants to have adequate time to start and complete their application.

In [ND Grants](#) applicants will be prompted to submit all the information contained in the following forms. Applicants should review these forms before applying to ensure they have all the information required:

- Standard Form 424A, Budget Information (Non-construction)
- Standard Form 424B, Standard Assurances (Non-construction)
- Standard Form LLL, Disclosure of Lobbying Activities

In addition, applicants must submit copies of the following in [ND Grants](#):

- Program Work Plan (located in the “Related Documents” tab in the [Grants.gov](#) posting for the FY 2020 EMPG);
- Indirect Cost Rate Agreement, if applicable.

Applicants must submit copies of the following in [ND Grants](#), if applying for construction projects:

- Standard Form 424C, Budget Information (Construction)
- Standard Form 424D, Standard Assurances (Construction)

For assistance registering for the [ND Grants](#) system, please contact ndgrants@fema.gov or (800)865-4076. For step-by-step instructions on using the [ND Grants](#) system and other guides, please see <https://www.fema.gov/non-disaster-grants-management-system>.

12. Intergovernmental Review

An intergovernmental review may be required. Applicants must contact their state’s Single Point of Contact (SPOC) to comply with the state’s process under Executive Order 12372.

(See <https://www.archives.gov/federal-register/codification/executive-order/12372.html>; <https://www.whitehouse.gov/wp-content/uploads/2019/02/SPOC-February-2019.pdf>).

13. Funding Restrictions

EMPG recipients may only fund activities and projects that are included and approved in the FY 2020 EMPG Work Plan. Activities and projects may include capability sustainment supported by previous EMPG funds provided the sustainment activity is cited in the FY 2020 Work Plan. For additional information on funding restrictions, please see the [Preparedness Grants Manual](#) for information on funding restrictions.

Environmental Planning and Historic Preservation (EHP) Compliance

Please see the [Preparedness Grants Manual](#) for information on EHP Compliance.

Emergency Communications and Resilience

Please see the [Preparedness Grants Manual](#) for information on Emergency Communications and Resilience.

FirstNet

Please see [Preparedness Grants Manual](#) for information on FirstNet.

14. Allowable Costs

Pre-Award Costs

Pre-award costs are allowable only with the prior written approval of DHS/FEMA and if they are included in the award agreement. To request pre-award costs, a written request must be included with the application and be signed by the Authorized Representative of the applicant. The request letter must outline what the pre-award costs are for, including a detailed budget break-out of pre-award costs from the post-award costs and a justification for approval.

Cost Principles

All costs charged to this award must be consistent with the Cost Principles for Federal Awards located at 2 C.F.R. Part 200, Subpart E.

Direct Costs

Please see the [Preparedness Grants Manual](#) for additional information on Direct costs.

Planning

Planning costs are allowed under this program only as described in this NOFO and the [Preparedness Grants Manual](#).

Organization

Organization costs are allowed under this program only as described in this NOFO and the [Preparedness Grants Manual](#).

Equipment

Equipment costs are allowed under this program only as described in this NOFO and the [Preparedness Grants Manual](#).

Training

Training costs are allowed under this program only as described in this NOFO and the [Preparedness Grants Manual](#).

Exercises

Exercise costs are allowed under this program only as described in this NOFO and the [Preparedness Grants Manual](#).

Travel

Domestic travel costs are allowed under this program, as provided for in this NOFO and the [Preparedness Grants Manual](#). International travel is not an allowable cost under this program unless approved in advance by FEMA.

Construction and Renovation

Construction and renovation costs are allowed under this program only as described in this NOFO and the [Preparedness Grants Manual](#).

Operational Overtime

Operational overtime costs are allowed under this program only as described in this NOFO and the [Preparedness Grants Manual](#).

Maintenance and Sustainment

Funding may be used to sustain programs that help achieve core capabilities that, while they may not be physically deployable, support national response capabilities, such as Geographic/Geospatial Information Systems (GIS), interoperable communications systems, capabilities as defined under the Response Mission Area of the Goal, and fusion centers.

For additional details on the use of funds for maintenance and sustainment costs, please refer to the [Preparedness Grants Manual](#).

Management and Administration (M&A) Costs

M&A costs are allowed for both state or territory and local-level EMAs. A state EMA may use up to 5 percent of the EMPG award for M&A purposes. In addition, local EMAs may retain and use up to 5 percent of the amount they receive from the state for local M&A purposes. If the SAA is not the state or territory-level EMA, the SAA is not eligible to retain funds for M&A.

M&A costs and activities are not operational costs; they are those costs and activities incurred in direct support of the grant or as a consequence of the grant and should be allocated across the entire lifecycle of the grant. They are directly related to managing and administering the award, such as financial management and monitoring. It should be noted that salaries of state and local emergency managers are not typically categorized as M&A costs unless the state or local EMA chooses to assign personnel to specific M&A activities.

Indirect Facilities & Administrative (F&A) Costs

Indirect costs are allowable under this program as described in 2 C.F.R. Part 200, including 2 C.F.R. § 200.414. Applicants with a negotiated indirect cost rate agreement that desire to charge indirect costs to an award must provide a copy of their negotiated indirect cost rate agreement at the time of application. Applicants that are not required by 2 C.F.R. Part 200 to have a negotiated indirect cost rate agreement but are required by 2 C.F.R. Part 200 to develop an indirect cost rate proposal must provide a copy of their proposal at the time of application. Post-award requests to charge indirect costs will be considered on a case-by-case basis and based upon the submission of an agreement or proposal as discussed above.

EMPG Work Plan Instructions

All EMPG applicants must develop and submit a Work Plan as described in the “EMPG Work Plan” section of the Preparedness Grants Manual. All EMPG Work Plans will require final approval by the Regional Administrator. Prior to submission of the EMPG Work Plan, the applicant must work with the Regional Administrator or designated FEMA Regional Program Manager to ensure that regional or State priorities are properly addressed in the EMPG Work Plan. All EMPG applicants are encouraged to use the templates provided in the [Preparedness Grants Manual](#) to submit a required Work Plan that outlines the State’s emergency management sustainment and enhancement efforts, including new and ongoing activities and projects, proposed for the EMPG period of performance. The Work Plan consists of a Program and Budget Narrative, Personnel Data Table, Training Data Table, Exercise Data Table, and Grant Activities Outline. This document is also located in the Related Documents tab of the [Grants.gov](#) EMPG posting.

E. Application Review Information

1. Application Evaluation Criteria

Please see the [Preparedness Grants Manual](#) for information on Application Evaluation Criteria.

a. Financial Integrity Criteria

Prior to making a federal award, FEMA is required by 31 U.S.C. § 3321 note, 41 U.S.C. § 2313, and 2 C.F.R. § 200.205 to review information available through any OMB-designated repositories of government wide eligibility qualification or financial integrity information. Therefore, application evaluation criteria may include the following risk-based considerations of the applicant:

- 1) Financial stability.
- 2) Quality of management systems and ability to meet management standards.
- 3) History of performance in managing federal award.
- 4) Reports and findings from audits.
- 5) Ability to effectively implement statutory, regulatory, or other requirements.

b. Supplemental Financial Integrity Criteria and Review

If the anticipated Federal share of a Federal award will be greater than the simplified acquisition threshold, currently \$250,000 (*see* Section 805 of the National Defense Authorization Act for Fiscal Year 2018, Pub. L. No. 115-91, OMB Memorandum M-18-18 at <https://www.whitehouse.gov/wp-content/uploads/2018/06/M-18-18.pdf>):

Prior to making a federal award where the anticipated total federal share will be greater than the simplified acquisition threshold, currently \$250,000 (*see* Section 805 of the National Defense Authorization Act for Fiscal Year 2018, Pub. L. No. 115-91, OMB Memorandum M-18-18 at <https://www.whitehouse.gov/wp-content/uploads/2018/06/M-18-18.pdf>):

- i. Prior to making a Federal award with a total amount of Federal share greater than the simplified acquisition threshold, DHS/FEMA is required to review and consider any information about the applicant that is in the designated integrity and performance system accessible through SAM (currently FAPIIS).
- ii. An applicant, at its option, may review information in the designated integrity and performance systems accessible through SAM and comment on any information about itself that a Federal awarding agency previously entered and is currently in the designated integrity and performance system accessible through SAM.
- iii. DHS/FEMA will consider any comments by the applicant, in addition to the other information in the designated integrity and performance system, in making a judgment about the applicant's integrity, business ethics, and record of performance under Federal awards when completing the review of risk posed by applicants as described in 2 C.F.R. § 200.205 Federal awarding agency review of risk posed by applicants.

2. Review and Selection Process

Initial Review

DHS/FEMA's Regional EMPG Managers conduct all pre-award reviews for EMPG grants. All EMPG Work Plans will require final approval by the Regional Administrator. Prior to submission of the EMPG Work Plan, the applicant must work with the Regional Administrator or designated FEMA Regional Program Manager to ensure that regional or State priorities are properly addressed in the EMPG Work Plan.

Funds for recipients who have not submitted their EMPG Work Plan as part of their application will not be released until such Work Plan is received, reviewed, and approved by DHS/FEMA. Recipients will be notified by the Regional Administrator or their FEMA Regional Program Manager should any component of the EMPG application require additional information.

Overall Review

FEMA Regions are responsible for reviewing submitted applications. Each FEMA Regional EMPG Manager reviews the FY 2020 EMPG Work Plans for their States or territories to assess the proposed EMPG investments against recognized emergency

preparedness needs, including support for maintenance and sustainment of core capabilities and progress made toward implementing the National Preparedness System.

F. Federal Award Administration Information

1. Notice of Award

Before accepting the award, the AOR and recipient should carefully read the award package. The award package includes instructions on administering the grant award and the terms and conditions associated with responsibilities under federal awards.

Recipients must accept all conditions in this NOFO as well as any special terms and conditions in the Notice of Award to receive an award under this program.

Please see the [Preparedness Grants Manual](#) for information on Notice of Award.

Obligation or Transfer to State EMA and Pass-Through Funding

Each State or territory shall obligate 100 percent of its total EMPG allocation to the designated State-level EMA. If the SAA is also the EMA, this requirement is automatically met. If the SAA is a separate agency or has a separate budget process, then all EMPG funds must be obligated to the EMA within 15 days of the grant award date. In instances where the State EMA is making sub-awards to local jurisdictions, DHS/FEMA expects the State EMA to make these awards as expeditiously as possible.

2. Administrative and National Policy Requirements

Please see the [Preparedness Grants Manual](#) for information on Administrative and National Policy Requirements.

All successful applicants for DHS grant and cooperative agreements are required to comply with DHS Standard Terms and Conditions, which are available online at: [DHS Standard Terms and Conditions](#).

The applicable DHS Standard Terms and Conditions will be those in effect at the time the award was made, unless the application is for a continuation award. In that event, the terms and conditions in effect at the time the original award was made will generally apply. What terms and conditions will apply for the award will be clearly stated in the award package at the time of award.

3. Reporting

Please see the [Preparedness Grants Manual](#) for information on Reporting, including financial, programmatic, and closeout reporting and disclosing information per 2 C.F.R. § 180.335.

a. Federal Financial Reporting Requirements

See the [Preparedness Grants Manual](#) for information on Federal Financial Reporting requirements.

The Federal Financial Report (FFR) form is available online at: [SF-425 OMB #4040-0014](#)

b. 2020/2021 Threat and Hazard Identification and Risk Assessment (THIRA) and Stakeholder Preparedness Review (SPR) Process

Please see the [Preparedness Grants Manual](#) for information on the THIRA and SPR process.

c. Supplemental Information Reporting Systems

Grant Reporting Tool (GRT): EMPG recipients will submit their Biannual Strategy Implementation Report (BSIR) information in the GRT. EMPG recipients are responsible for filing a BSIR report in the GRT twice a year and should register to create an account as soon as possible. Recipients should go to the following link and follow the links to create a new account: <https://www.reporting.odp.dhs.gov/>. This report is used to track the progress toward the completion of projects.

Unified Reporting Tool (URT): The URT is DHS/FEMA's collection mechanism for THIRA, SPR, and related preparedness information. The URT includes questions related to NIMS adoption and implementation, Comprehensive Preparedness Guide (CPG) 101v2 compliance, and other preparedness questions, as appropriate. Information on the URT, including when recipients will receive the tool and how to use the tool, will be sent to recipients later in 2020.

See the [Preparedness Grants Manual](#) for information on Performance Reporting requirements.

d. Closeout Reporting Requirements

Within 90 days after the end of the period of performance, or after an amendment has been issued to close out a grant, recipients must submit the following:

- 1) The final request for payment, if applicable;
- 2) The final FFR (SF-425);
- 3) The final progress report detailing all accomplishments;
- 4) A qualitative narrative summary of the impact of those accomplishments throughout the period of performance; and
- 5) Other documents required by this NOFO, terms and conditions of the award, or other FEMA guidance.

If applicable, an inventory of all construction projects that used funds from this program must be reported with the final progress report.

After these reports have been reviewed and approved by FEMA a closeout notice will be completed to close out the grant. The notice will indicate the period of performance as closed, list any remaining funds that will be deobligated, and address the requirement of maintaining the grant records for three years from the date of the final FFR, unless a longer period applies, such as due to an audit or litigation, for equipment or real property used beyond the period of performance, or due to other circumstances outlined in 2 C.F.R. § 200.333.

In addition, any recipient that issues subawards to any subrecipient is responsible for closing out those subawards as described in 2 C.F.R. § 200.343. Recipients acting as pass-through entities must ensure that they complete the closeout of their subawards in time to submit all necessary documentation and information to FEMA during the closeout of their prime grant award.

The recipient is responsible for returning any funds that have been drawn down but remain as unliquidated on recipient financial records.

G. DHS Awarding Agency Contact Information

1. Contact and Resource Information

Centralized Scheduling and Information Desk (CSID)

CSID is a non-emergency comprehensive management and information resource developed by DHS/FEMA for grants stakeholders. CSID provides general information on all DHS/FEMA grant programs and maintains a comprehensive database containing key personnel contact information at the Federal, State, and local levels. When necessary, recipients will be directed to a Federal point of contact who can answer specific programmatic questions or concerns. CSID can be reached by phone at (800) 368-6498 or by email at askcsid@fema.gov, Monday through Friday, 9 a.m. – 5 p.m. ET.

FEMA Grant Programs Directorate

FEMA's Grant Programs Directorate (GPD) provides support regarding financial matters and budgetary technical assistance. Additional guidance and information can be obtained by contacting the FEMA's Grant Operations Help Desk via email at ASK-GMD@fema.gov.

FEMA Regional Offices

FEMA Regional offices manage, administer, and conduct the application budget review, create the award package, approve, amend, and close out awards, as well as conduct cash analysis, financial and programmatic monitoring, and audit resolution for the EMPG. The Regions also provide technical assistance to EMPG recipients. FEMA Regional Office contact information is available at: <https://www.fema.gov/fema-regional-contacts>.

GPD Environmental Planning and Historic Preservation (GPD EHP)

The DHS/FEMA GPD EHP Team provides guidance and information about the EHP review process to recipients and subrecipients. All inquiries and communications about GPD projects or the EHP review process, including the submittal of EHP review materials, should be sent to gpdehpinfo@fema.gov. EHP Technical Assistance, including the EHP Screening Form, can be found at: <https://www.fema.gov/media-library/assets/documents/85376>.

2. Systems Information

Grants.gov

For technical assistance with [Grants.gov](#), please call the [Grants.gov](#) customer support hotline at (800) 518-4726. Support is available 24/7, except for Federal holidays.

ND Grants System

For technical assistance with the [ND Grants](#) System, please contact the [ND Grants](#) Helpdesk at ndgrants@fema.gov or (800) 865-4076, Monday through Friday, 9 a.m. – 5 p.m. ET.

Payment and Reporting System (PARS)

DHS/FEMA uses the [Payment and Reporting System \(PARS\)](#) for financial reporting, invoicing, and tracking payments. DHS/FEMA uses the Direct Deposit/Electronic Funds Transfer (DD/EFT) method of payment to recipients. To enroll in the DD/EFT, the recipients must complete a Standard Form 1199A, Direct Deposit Form.

H. Additional Information

GPD has developed the [Preparedness Grants Manual](#) to guide applicants and recipients of grant funding on how to manage their grants and other resources. Information on the following list of topics is included in the manual. Recipients seeking guidance on policies and procedures for managing Preparedness Grants should reference the manual for further information. Examples of information contained in the [Preparedness Grants Manual](#) include:

- Conflicts of Interest in the Administration of Federal Awards and Subawards
- Extensions
- Monitoring
- Procurement Integrity
- Other Post-Award Requirements

In response to recent disasters, FEMA has introduced a new lifelines construct, to enable the continuous operation of government functions and critical business essential to human health, safety, or economic security during and after a disaster. To learn more about lifelines, please refer to the [Preparedness Grants Manual](#), or visit <https://www.fema.gov/media-library/assets/documents/177222>.

Additionally, recipients can access the [DHS Strategic Framework for Countering Terrorism and Targeted Violence](#) which explains how the department will use the tools and expertise that have protected and strengthened the country from foreign terrorist organizations to address the evolving challenges of today.

Agenda Item #10b

Draft County & City Allocation by Population & Base

FFY2020 Award \$ 4,639,757.00

Local Governments	2010 Census Population	7/1/18 Population	% of 7/1/18 Population	Standard Allocation 2015-2019	% of Total Allocation
Carson City	55,274	56,057	1.83%	\$ 72,274.00	1.59%
Churchill	16,271	16,503	0.54%	\$ 15,536.00	0.34%
Fallon	8,606	9,125	0.30%	\$ 28,082.25	0.62%
Clark	877,547	1,025,560	33.54%	\$ 529,000.00	11.62%
Las Vegas	583,756	644,113	21.07%	\$ 391,886.00	8.61%
N Las Vegas	216,961	248,701	8.13%	\$ 151,407.00	3.33%
Henderson	257,729	310,244	10.15%	\$ 157,243.03	3.45%
Mesquite	15,276	22,557	0.74%	\$ 30,000.00	0.66%
Douglas	46,997	49,070	1.60%	\$ 57,239.00	1.26%
Elko	44,408	49,920	1.63%	\$ 28,924.00	0.64%
West Wendover	4,410	4,406	0.14%	\$ 24,417.00	0.54%
Esmeralda	783	969	0.03%	\$ 723.66	0.02%
Eureka	1,987	1,951	0.06%	\$ 1,457.03	0.03%
Humboldt	16,528	16,989	0.56%	\$ 15,518.40	0.34%
Lander	5,775	6,065	0.20%	\$ 4,529.42	0.10%
Lincoln	5,345	5,255	0.17%	\$ 23,592.00	0.52%
Lyon	51,980	55,551	1.82%	\$ 41,486.21	0.91%
Mineral	4,772	4,690	0.15%	\$ 20,723.00	0.46%
Nye	43,946	47,856	1.57%	\$ 42,596.00	0.94%
Pershing	6,753	6,858	0.22%	\$ 9,050.00	0.20%
Storey	4,010	4,227	0.14%	\$ 17,057.00	0.37%
Washoe	105,922	111,291	3.64%	\$ 160,877.00	3.53%
Sparks	90,264	100,140	3.28%	\$ -	0.00%
Reno	225,221	248,806	8.14%	\$ 142,130.00	3.12%
White Pine	10,030	10,678	0.35%	\$ -	0.00%
Local Total	2,700,551	3,057,582	100.00%	\$ 1,965,748.00	43.19%

Duck Water Shoshone				\$ 34,419.00	0.76%
Fallon Paiute -Shoshone				\$ 20,240.00	0.44%
Pyramid Lake Paiute				\$ 20,613.00	0.45%
Reno-Sparks Indian Colony				\$ 19,000.00	0.42%
Tribal Total				\$ 94,272.00	2.07%

State Allocation				\$ 2,424,595.00	53.27%
Nevada Tribal Emergency Coordinating Council				\$ 67,040.00	1.47%
State Total				\$ 2,491,635.00	54.74%

FFY19 Award Total				\$ 4,551,655.00	100.00%
--------------------------	--	--	--	------------------------	----------------

Base Allocation	Population Allocation		% of Total
0.50%	\$ 1,933,796.96	Base +Pop	Allocation
\$ 11,599.39	\$ 35,453.79	\$ 47,053.18	1.01%
\$ 11,599.39	\$ 10,437.48	\$ 22,036.87	0.47%
\$ 11,599.39	\$ 5,771.19	\$ 17,370.59	0.37%
\$ 11,599.39	\$ 648,625.22	\$ 660,224.62	14.23%
\$ 11,599.39	\$ 407,375.42	\$ 418,974.81	9.03%
\$ 11,599.39	\$ 157,293.32	\$ 168,892.72	3.64%
\$ 11,599.39	\$ 196,216.78	\$ 207,816.18	4.48%
\$ 11,599.39	\$ 14,266.39	\$ 25,865.78	0.56%
\$ 11,599.39	\$ 31,034.79	\$ 42,634.18	0.92%
\$ 11,599.39	\$ 31,572.38	\$ 43,171.77	0.93%
\$ 11,599.39	\$ 2,786.62	\$ 14,386.01	0.31%
\$ 11,599.39	\$ 612.85	\$ 12,212.25	0.26%
\$ 11,599.39	\$ 1,233.93	\$ 12,833.32	0.28%
\$ 11,599.39	\$ 10,744.86	\$ 22,344.25	0.48%
\$ 11,599.39	\$ 3,835.87	\$ 15,435.26	0.33%
\$ 11,599.39	\$ 3,323.57	\$ 14,922.97	0.32%
\$ 11,599.39	\$ 35,133.76	\$ 46,733.15	1.01%
\$ 11,599.39	\$ 2,966.24	\$ 14,565.63	0.31%
\$ 11,599.39	\$ 30,266.98	\$ 41,866.38	0.90%
\$ 11,599.39	\$ 4,337.41	\$ 15,936.80	0.34%
\$ 11,599.39	\$ 2,673.41	\$ 14,272.80	0.31%
\$ 11,599.39	\$ 70,387.06	\$ 81,986.45	1.77%
\$ 11,599.39	\$ 63,334.50	\$ 74,933.89	1.62%
\$ 11,599.39	\$ 157,359.73	\$ 168,959.12	3.64%
\$ 11,599.39	\$ 6,753.40	\$ 18,352.80	0.40%
\$ 289,984.81	\$ 1,933,796.96	\$ 2,223,781.77	47.93%

\$ 35,085.22	0.76%
\$ 20,631.77	0.44%
\$ 21,011.99	0.45%
\$ 19,367.76	0.42%
\$ 96,096.73	2.07%

\$ 2,251,540.87	48.53%
\$ 68,337.63	1.47%
\$ 2,319,878.50	50.00%

Allocation Change	% Change
Reduction/Increase	
(25,220.82)	-34.90%
6,500.87	41.84%
(10,711.66)	-38.14%
131,224.62	24.81%
27,088.81	6.91%
17,485.72	11.55%
50,573.15	32.16%
(4,134.22)	-13.78%
(14,604.82)	-25.52%
14,247.77	49.26%
(10,030.99)	-41.08%
11,488.58	1587.56%
11,376.29	780.79%
6,825.85	43.99%
10,905.84	240.78%
(8,669.03)	-36.75%
5,246.94	12.65%
(6,157.37)	-29.71%
(729.62)	-1.71%
6,886.80	76.10%
(2,784.20)	-16.32%
(78,890.55)	-49.04%
74,933.89	#DIV/0!
26,829.12	18.88%
18,352.80	#DIV/0!
\$ 258,033.76	13.13%

666.22	1.94%
391.77	1.94%
398.99	1.94%
367.76	1.94%
\$ 1,824.73	1.94%

(173,054.12)	-7.14%
1,297.63	1.94%
\$ (171,756.50)	-6.89%

FFY2020 Award \$ 4,639,757.00 100.00%

% Change from Last FFY 1.93560%

\$ 88,102.00 1.94%

Draft County & City Allocation by Population & Base

FFY2020 Award \$ 4,639,757.00

Local Governments	2010 Census Population	7/1/18 Population	% of 7/1/18 Population	Standard Allocation 2015-2019	% of Total Allocation
Carson City	55,274	56,057	1.83%	\$ 72,274.00	1.59%
Churchill	16,271	16,503	0.54%	\$ 15,536.00	0.34%
Fallon	8,606	9,125	0.30%	\$ 28,082.25	0.62%
Clark	877,547	1,025,560	33.54%	\$ 529,000.00	11.62%
Las Vegas	583,756	644,113	21.07%	\$ 391,886.00	8.61%
N Las Vegas	216,961	248,701	8.13%	\$ 151,407.00	3.33%
Henderson	257,729	310,244	10.15%	\$ 157,243.03	3.45%
Mesquite	15,276	22,557	0.74%	\$ 30,000.00	0.66%
Douglas	46,997	49,070	1.60%	\$ 57,239.00	1.26%
Elko	44,408	49,920	1.63%	\$ 28,924.00	0.64%
West Wendover	4,410	4,406	0.14%	\$ 24,417.00	0.54%
Esmeralda	783	969	0.03%	\$ 723.66	0.02%
Eureka	1,987	1,951	0.06%	\$ 1,457.03	0.03%
Humboldt	16,528	16,989	0.56%	\$ 15,518.40	0.34%
Lander	5,775	6,065	0.20%	\$ 4,529.42	0.10%
Lincoln	5,345	5,255	0.17%	\$ 23,592.00	0.52%
Lyon	51,980	55,551	1.82%	\$ 41,486.21	0.91%
Mineral	4,772	4,690	0.15%	\$ 20,723.00	0.46%
Nye	43,946	47,856	1.57%	\$ 42,596.00	0.94%
Pershing	6,753	6,858	0.22%	\$ 9,050.00	0.20%
Storey	4,010	4,227	0.14%	\$ 17,057.00	0.37%
Washoe	105,922	111,291	3.64%	\$ 160,877.00	3.53%
Sparks	90,264	100,140	3.28%	\$ -	0.00%
Reno	225,221	248,806	8.14%	\$ 142,130.00	3.12%
White Pine	10,030	10,678	0.35%	\$ -	0.00%
Local Total	2,700,551	3,057,582	100.00%	\$ 1,965,748.00	43.19%

Duck Water Shoshone				\$ 34,419.00	0.76%
Fallon Paiute -Shoshone				\$ 20,240.00	0.44%
Pyramid Lake Paiute				\$ 20,613.00	0.45%
Reno-Sparks Indian Colony				\$ 19,000.00	0.42%
Tribal Total				\$ 94,272.00	2.07%

State Allocation				\$ 2,424,595.00	53.27%
Nevada Tribal Emergency Coordinating Council				\$ 67,040.00	1.47%
State Total				\$ 2,491,635.00	54.74%

FFY19 Award Total				\$ 4,551,655.00	100.00%
--------------------------	--	--	--	------------------------	----------------

Base Allocation	Population Allocation		% of Total
0.75%	\$ 1,788,804.55	Base +Pop	Allocation
\$ 17,399.09	\$ 32,795.53	\$ 50,194.62	1.08%
\$ 17,399.09	\$ 9,654.90	\$ 27,053.99	0.58%
\$ 17,399.09	\$ 5,338.48	\$ 22,737.57	0.49%
\$ 17,399.09	\$ 599,992.54	\$ 617,391.63	13.31%
\$ 17,399.09	\$ 376,831.19	\$ 394,230.28	8.50%
\$ 17,399.09	\$ 145,499.77	\$ 162,898.86	3.51%
\$ 17,399.09	\$ 181,504.82	\$ 198,903.91	4.29%
\$ 17,399.09	\$ 13,196.72	\$ 30,595.81	0.66%
\$ 17,399.09	\$ 28,707.86	\$ 46,106.95	0.99%
\$ 17,399.09	\$ 29,205.14	\$ 46,604.23	1.00%
\$ 17,399.09	\$ 2,577.68	\$ 19,976.77	0.43%
\$ 17,399.09	\$ 566.90	\$ 17,965.99	0.39%
\$ 17,399.09	\$ 1,141.41	\$ 18,540.50	0.40%
\$ 17,399.09	\$ 9,939.23	\$ 27,338.32	0.59%
\$ 17,399.09	\$ 3,548.26	\$ 20,947.35	0.45%
\$ 17,399.09	\$ 3,074.38	\$ 20,473.47	0.44%
\$ 17,399.09	\$ 32,499.50	\$ 49,898.59	1.08%
\$ 17,399.09	\$ 2,743.83	\$ 20,142.92	0.43%
\$ 17,399.09	\$ 27,997.62	\$ 45,396.71	0.98%
\$ 17,399.09	\$ 4,012.20	\$ 21,411.29	0.46%
\$ 17,399.09	\$ 2,472.96	\$ 19,872.05	0.43%
\$ 17,399.09	\$ 65,109.57	\$ 82,508.66	1.78%
\$ 17,399.09	\$ 58,585.80	\$ 75,984.89	1.64%
\$ 17,399.09	\$ 145,561.20	\$ 162,960.29	3.51%
\$ 17,399.09	\$ 6,247.05	\$ 23,646.13	0.51%
\$ 434,977.22	\$ 1,788,804.55	\$ 2,223,781.77	47.93%

\$ 35,085.22	0.76%
\$ 20,631.77	0.44%
\$ 21,011.99	0.45%
\$ 19,367.76	0.42%
\$ 96,096.73	2.07%

\$ 2,251,540.87	48.53%
\$ 68,337.63	1.47%
\$ 2,319,878.50	50.00%

FFY2020 Award	\$ 4,639,757.00	100.00%
----------------------	------------------------	----------------

% Change from Last FFY 1.93560%

Allocation Change	% Change
Reduction/Increase	
(22,079.38)	-30.55%
11,517.99	74.14%
(5,344.68)	-19.03%
88,391.63	16.71%
2,344.28	0.60%
11,491.86	7.59%
41,660.88	26.49%
595.81	1.99%
(11,132.05)	-19.45%
17,680.23	61.13%
(4,440.23)	-18.18%
17,242.33	2382.65%
17,083.47	1172.48%
11,819.92	76.17%
16,417.93	362.47%
(3,118.53)	-13.22%
8,412.38	20.28%
(580.08)	-2.80%
2,800.71	6.58%
12,361.29	136.59%
2,815.05	16.50%
(78,368.34)	-48.71%
75,984.89	#DIV/0!
20,830.29	14.66%
23,646.13	#DIV/0!
\$ 258,033.76	13.13%

666.22	1.94%
391.77	1.94%
398.99	1.94%
367.76	1.94%
\$ 1,824.73	1.94%

(173,054.12)	-7.14%
1,297.63	1.94%
\$ (171,756.50)	-6.89%

\$ 88,102.00	1.94%
---------------------	--------------

Draft County & City Allocation by Population & Base

FFY2020 Award \$ 4,639,757.00

Local Governments	2010 Census Population	7/1/18 Population	% of 7/1/18 Population	Standard Allocation 2015-2019	% of Total Allocation
Carson City	55,274	56,057	1.83%	\$ 72,274.00	1.59%
Churchill	16,271	16,503	0.54%	\$ 15,536.00	0.34%
Fallon	8,606	9,125	0.30%	\$ 28,082.25	0.62%
Clark	877,547	1,025,560	33.54%	\$ 529,000.00	11.62%
Las Vegas	583,756	644,113	21.07%	\$ 391,886.00	8.61%
N Las Vegas	216,961	248,701	8.13%	\$ 151,407.00	3.33%
Henderson	257,729	310,244	10.15%	\$ 157,243.03	3.45%
Mesquite	15,276	22,557	0.74%	\$ 30,000.00	0.66%
Douglas	46,997	49,070	1.60%	\$ 57,239.00	1.26%
Elko	44,408	49,920	1.63%	\$ 28,924.00	0.64%
West Wendover	4,410	4,406	0.14%	\$ 24,417.00	0.54%
Esmeralda	783	969	0.03%	\$ 723.66	0.02%
Eureka	1,987	1,951	0.06%	\$ 1,457.03	0.03%
Humboldt	16,528	16,989	0.56%	\$ 15,518.40	0.34%
Lander	5,775	6,065	0.20%	\$ 4,529.42	0.10%
Lincoln	5,345	5,255	0.17%	\$ 23,592.00	0.52%
Lyon	51,980	55,551	1.82%	\$ 41,486.21	0.91%
Mineral	4,772	4,690	0.15%	\$ 20,723.00	0.46%
Nye	43,946	47,856	1.57%	\$ 42,596.00	0.94%
Pershing	6,753	6,858	0.22%	\$ 9,050.00	0.20%
Storey	4,010	4,227	0.14%	\$ 17,057.00	0.37%
Washoe	105,922	111,291	3.64%	\$ 160,877.00	3.53%
Sparks	90,264	100,140	3.28%	\$ -	0.00%
Reno	225,221	248,806	8.14%	\$ 142,130.00	3.12%
White Pine	10,030	10,678	0.35%	\$ -	0.00%
Local Total	2,700,551	3,057,582	100.00%	\$ 1,965,748.00	43.19%

Duck Water Shoshone				\$ 34,419.00	0.76%
Fallon Paiute -Shoshone				\$ 20,240.00	0.44%
Pyramid Lake Paiute				\$ 20,613.00	0.45%
Reno-Sparks Indian Colony				\$ 19,000.00	0.42%
Tribal Total				\$ 94,272.00	2.07%

State Allocation				\$ 2,424,595.00	53.27%
Nevada Tribal Emergency Coordinating Council				\$ 67,040.00	1.47%
State Total				\$ 2,491,635.00	54.74%

FFY19 Award Total				\$ 4,551,655.00	100.00%
--------------------------	--	--	--	------------------------	----------------

Base Allocation	Population Allocation		% of Total
1.00%	\$ 1,643,812.14	Base +Pop	Allocation
\$ 23,198.79	\$ 30,137.27	\$ 53,336.06	1.15%
\$ 23,198.79	\$ 8,872.32	\$ 32,071.10	0.69%
\$ 23,198.79	\$ 4,905.77	\$ 28,104.55	0.61%
\$ 23,198.79	\$ 551,359.86	\$ 574,558.64	12.38%
\$ 23,198.79	\$ 346,286.96	\$ 369,485.74	7.96%
\$ 23,198.79	\$ 133,706.22	\$ 156,905.00	3.38%
\$ 23,198.79	\$ 166,792.86	\$ 189,991.65	4.09%
\$ 23,198.79	\$ 12,127.06	\$ 35,325.84	0.76%
\$ 23,198.79	\$ 26,380.93	\$ 49,579.72	1.07%
\$ 23,198.79	\$ 26,837.91	\$ 50,036.69	1.08%
\$ 23,198.79	\$ 2,368.75	\$ 25,567.53	0.55%
\$ 23,198.79	\$ 520.95	\$ 23,719.74	0.51%
\$ 23,198.79	\$ 1,048.89	\$ 24,247.68	0.52%
\$ 23,198.79	\$ 9,133.60	\$ 32,332.38	0.70%
\$ 23,198.79	\$ 3,260.66	\$ 26,459.44	0.57%
\$ 23,198.79	\$ 2,825.18	\$ 26,023.97	0.56%
\$ 23,198.79	\$ 29,865.24	\$ 53,064.02	1.14%
\$ 23,198.79	\$ 2,521.43	\$ 25,720.21	0.55%
\$ 23,198.79	\$ 25,728.26	\$ 48,927.05	1.05%
\$ 23,198.79	\$ 3,686.99	\$ 26,885.77	0.58%
\$ 23,198.79	\$ 2,272.51	\$ 25,471.30	0.55%
\$ 23,198.79	\$ 59,832.08	\$ 83,030.87	1.79%
\$ 23,198.79	\$ 53,837.10	\$ 77,035.89	1.66%
\$ 23,198.79	\$ 133,762.67	\$ 156,961.45	3.38%
\$ 23,198.79	\$ 5,740.69	\$ 28,939.47	0.62%
\$ 579,969.63	\$ 1,643,812.14	\$ 2,223,781.77	47.93%

\$ 35,085.22	0.76%
\$ 20,631.77	0.44%
\$ 21,011.99	0.45%
\$ 19,367.76	0.42%
\$ 96,096.73	2.07%

\$ 2,251,540.87	48.53%
\$ 68,337.63	1.47%
\$ 2,319,878.50	50.00%

FFY2020 Award	\$ 4,639,757.00	100.00%
----------------------	------------------------	----------------

% Change from Last FFY 1.93560%

Allocation Change	% Change
Reduction/Increase	
(18,937.94)	-26.20%
16,535.10	106.43%
22.30	0.08%
45,558.64	8.61%
(22,400.26)	-5.72%
5,498.00	3.63%
32,748.62	20.83%
5,325.84	17.75%
(7,659.28)	-13.38%
21,112.69	72.99%
1,150.53	4.71%
22,996.08	3177.74%
22,790.65	1564.18%
16,813.98	108.35%
21,930.02	484.17%
2,431.97	10.31%
11,577.81	27.91%
4,997.21	24.11%
6,331.05	14.86%
17,835.77	197.08%
8,414.30	49.33%
(77,846.13)	-48.39%
77,035.89	#DIV/0!
14,831.45	10.44%
28,939.47	#DIV/0!
\$ 258,033.76	13.13%

666.22	1.94%
391.77	1.94%
398.99	1.94%
367.76	1.94%
\$ 1,824.73	1.94%

(173,054.12)	-7.14%
1,297.63	1.94%
(171,756.50)	-6.89%

\$ 88,102.00	1.94%
--------------	-------

Draft County & City Allocation by Population & Base

FFY2020 Award \$ 4,639,757.00

Local Governments	2010 Census Population	7/1/18 Population	% of 7/1/18 Population	Standard Allocation 2015-2019	% of Total Allocation
Carson City	55,274	56,057	1.83%	\$ 72,274.00	1.59%
Churchill	16,271	16,503	0.54%	\$ 15,536.00	0.34%
Fallon	8,606	9,125	0.30%	\$ 28,082.25	0.62%
Clark	877,547	1,025,560	33.54%	\$ 529,000.00	11.62%
Las Vegas	583,756	644,113	21.07%	\$ 391,886.00	8.61%
N Las Vegas	216,961	248,701	8.13%	\$ 151,407.00	3.33%
Henderson	257,729	310,244	10.15%	\$ 157,243.03	3.45%
Mesquite	15,276	22,557	0.74%	\$ 30,000.00	0.66%
Douglas	46,997	49,070	1.60%	\$ 57,239.00	1.26%
Elko	44,408	49,920	1.63%	\$ 28,924.00	0.64%
West Wendover	4,410	4,406	0.14%	\$ 24,417.00	0.54%
Esmeralda	783	969	0.03%	\$ 723.66	0.02%
Eureka	1,987	1,951	0.06%	\$ 1,457.03	0.03%
Humboldt	16,528	16,989	0.56%	\$ 15,518.40	0.34%
Lander	5,775	6,065	0.20%	\$ 4,529.42	0.10%
Lincoln	5,345	5,255	0.17%	\$ 23,592.00	0.52%
Lyon	51,980	55,551	1.82%	\$ 41,486.21	0.91%
Mineral	4,772	4,690	0.15%	\$ 20,723.00	0.46%
Nye	43,946	47,856	1.57%	\$ 42,596.00	0.94%
Pershing	6,753	6,858	0.22%	\$ 9,050.00	0.20%
Storey	4,010	4,227	0.14%	\$ 17,057.00	0.37%
Washoe	105,922	111,291	3.64%	\$ 160,877.00	3.53%
Sparks	90,264	100,140	3.28%	\$ -	0.00%
Reno	225,221	248,806	8.14%	\$ 142,130.00	3.12%
White Pine	10,030	10,678	0.35%	\$ -	0.00%
Local Total	2,700,551	3,057,582	100.00%	\$ 1,965,748.00	43.19%

Duck Water Shoshone				\$ 34,419.00	0.76%
Fallon Paiute -Shoshone				\$ 20,240.00	0.44%
Pyramid Lake Paiute				\$ 20,613.00	0.45%
Reno-Sparks Indian Colony				\$ 19,000.00	0.42%
Tribal Total				\$ 94,272.00	2.07%

State Allocation				\$ 2,424,595.00	53.27%
Nevada Tribal Emergency Coordinating Council				\$ 67,040.00	1.47%
State Total				\$ 2,491,635.00	54.74%

FFY19 Award Total				\$ 4,551,655.00	100.00%
--------------------------	--	--	--	------------------------	----------------

Base Allocation	Population Allocation		% of Total
0.50%	\$ 2,026,592.10	Base +Pop	Allocation
\$ 11,599.39	\$ 37,155.07	\$ 48,754.46	1.05%
\$ 11,599.39	\$ 10,938.33	\$ 22,537.73	0.49%
	\$ 6,048.13	\$ 6,048.13	0.13%
\$ 11,599.39	\$ 679,750.14	\$ 691,349.53	14.90%
	\$ 426,923.73	\$ 426,923.73	9.20%
	\$ 164,841.20	\$ 164,841.20	3.55%
	\$ 205,632.44	\$ 205,632.44	4.43%
	\$ 14,950.98	\$ 14,950.98	0.32%
\$ 11,599.39	\$ 32,524.03	\$ 44,123.42	0.95%
\$ 11,599.39	\$ 33,087.41	\$ 44,686.81	0.96%
	\$ 2,920.34	\$ 2,920.34	0.06%
\$ 11,599.39	\$ 642.26	\$ 12,241.65	0.26%
\$ 11,599.39	\$ 1,293.14	\$ 12,892.53	0.28%
\$ 11,599.39	\$ 11,260.46	\$ 22,859.85	0.49%
\$ 11,599.39	\$ 4,019.94	\$ 15,619.33	0.34%
\$ 11,599.39	\$ 3,483.06	\$ 15,082.45	0.33%
\$ 11,599.39	\$ 36,819.69	\$ 48,419.08	1.04%
\$ 11,599.39	\$ 3,108.57	\$ 14,707.97	0.32%
\$ 11,599.39	\$ 31,719.38	\$ 43,318.77	0.93%
\$ 11,599.39	\$ 4,545.54	\$ 16,144.93	0.35%
\$ 11,599.39	\$ 2,801.69	\$ 14,401.09	0.31%
\$ 11,599.39	\$ 73,764.65	\$ 85,364.04	1.84%
	\$ 66,373.67	\$ 66,373.67	1.43%
	\$ 164,910.79	\$ 164,910.79	3.55%
\$ 11,599.39	\$ 7,077.47	\$ 18,676.86	0.40%
\$ 197,189.67	\$ 2,026,592.10	\$ 2,223,781.77	47.93%

\$ 35,085.22	0.76%
\$ 20,631.77	0.44%
\$ 21,011.99	0.45%
\$ 19,367.76	0.42%
\$ 96,096.73	2.07%

\$ 2,251,540.87	48.53%
\$ 68,337.63	1.47%
\$ 2,319,878.50	50.00%

FFY2020 Award	\$ 4,639,757.00	100.00%
----------------------	------------------------	----------------

% Change from Last FFY 1.93560%

Allocation Change	% Change
Reduction/Increase	
(23,519.54)	-32.54%
7,001.73	45.07%
(22,034.12)	-78.46%
162,349.53	30.69%
35,037.73	8.94%
13,434.20	8.87%
48,389.41	30.77%
(15,049.02)	-50.16%
(13,115.58)	-22.91%
15,762.81	54.50%
(21,496.66)	-88.04%
11,517.99	1591.63%
11,435.50	784.85%
7,341.45	47.31%
11,089.91	244.84%
(8,509.55)	-36.07%
6,932.87	16.71%
(6,015.03)	-29.03%
722.77	1.70%
7,094.93	78.40%
(2,655.91)	-15.57%
(75,512.96)	-46.94%
66,373.67	#DIV/0!
22,780.79	16.03%
18,676.86	#DIV/0!
\$ 258,033.76	13.13%

666.22	1.94%
391.77	1.94%
398.99	1.94%
367.76	1.94%
\$ 1,824.73	1.94%

(173,054.12)	-7.14%
1,297.63	1.94%
(171,756.50)	-6.89%

\$ 88,102.00	1.94%
--------------	-------

Draft County & City Allocation by Population & Base

FFY2020 Award \$ 4,639,757.00

Local Governments	2010 Census Population	7/1/18 Population	% of 7/1/18 Population	Standard Allocation 2015-2019	% of Total Allocation
Carson City	55,274	56,057	1.83%	\$ 72,274.00	1.59%
Churchill	16,271	16,503	0.54%	\$ 15,536.00	0.34%
Fallon	8,606	9,125	0.30%	\$ 28,082.25	0.62%
Clark	877,547	1,025,560	33.54%	\$ 529,000.00	11.62%
Las Vegas	583,756	644,113	21.07%	\$ 391,886.00	8.61%
N Las Vegas	216,961	248,701	8.13%	\$ 151,407.00	3.33%
Henderson	257,729	310,244	10.15%	\$ 157,243.03	3.45%
Mesquite	15,276	22,557	0.74%	\$ 30,000.00	0.66%
Douglas	46,997	49,070	1.60%	\$ 57,239.00	1.26%
Elko	44,408	49,920	1.63%	\$ 28,924.00	0.64%
West Wendover	4,410	4,406	0.14%	\$ 24,417.00	0.54%
Esmeralda	783	969	0.03%	\$ 723.66	0.02%
Eureka	1,987	1,951	0.06%	\$ 1,457.03	0.03%
Humboldt	16,528	16,989	0.56%	\$ 15,518.40	0.34%
Lander	5,775	6,065	0.20%	\$ 4,529.42	0.10%
Lincoln	5,345	5,255	0.17%	\$ 23,592.00	0.52%
Lyon	51,980	55,551	1.82%	\$ 41,486.21	0.91%
Mineral	4,772	4,690	0.15%	\$ 20,723.00	0.46%
Nye	43,946	47,856	1.57%	\$ 42,596.00	0.94%
Pershing	6,753	6,858	0.22%	\$ 9,050.00	0.20%
Storey	4,010	4,227	0.14%	\$ 17,057.00	0.37%
Washoe	105,922	111,291	3.64%	\$ 160,877.00	3.53%
Sparks	90,264	100,140	3.28%	\$ -	0.00%
Reno	225,221	248,806	8.14%	\$ 142,130.00	3.12%
White Pine	10,030	10,678	0.35%	\$ -	0.00%
Local Total	2,700,551	3,057,582	100.00%	\$ 1,965,748.00	43.19%

Duck Water Shoshone				\$ 34,419.00	0.76%
Fallon Paiute -Shoshone				\$ 20,240.00	0.44%
Pyramid Lake Paiute				\$ 20,613.00	0.45%
Reno-Sparks Indian Colony				\$ 19,000.00	0.42%
Tribal Total				\$ 94,272.00	2.07%

State Allocation				\$ 2,424,595.00	53.27%
Nevada Tribal Emergency Coordinating Council				\$ 67,040.00	1.47%
State Total				\$ 2,491,635.00	54.74%

FFY19 Award Total				\$ 4,551,655.00	100.00%
--------------------------	--	--	--	------------------------	----------------

Base Allocation	Population Allocation		% of Total
0.75%	\$ 1,927,997.26	Base +Pop	Allocation
\$ 17,399.09	\$ 35,347.46	\$ 52,746.54	1.14%
\$ 17,399.09	\$ 10,406.18	\$ 27,805.27	0.60%
	\$ 5,753.88	\$ 5,753.88	0.12%
\$ 17,399.09	\$ 646,679.92	\$ 664,079.00	14.31%
	\$ 406,153.65	\$ 406,153.65	8.75%
	\$ 156,821.58	\$ 156,821.58	3.38%
	\$ 195,628.30	\$ 195,628.30	4.22%
	\$ 14,223.60	\$ 14,223.60	0.31%
\$ 17,399.09	\$ 30,941.71	\$ 48,340.80	1.04%
\$ 17,399.09	\$ 31,477.69	\$ 48,876.78	1.05%
	\$ 2,778.26	\$ 2,778.26	0.06%
\$ 17,399.09	\$ 611.02	\$ 18,010.10	0.39%
\$ 17,399.09	\$ 1,230.23	\$ 18,629.32	0.40%
\$ 17,399.09	\$ 10,712.63	\$ 28,111.72	0.61%
\$ 17,399.09	\$ 3,824.36	\$ 21,223.45	0.46%
\$ 17,399.09	\$ 3,313.61	\$ 20,712.70	0.45%
\$ 17,399.09	\$ 35,028.39	\$ 52,427.48	1.13%
\$ 17,399.09	\$ 2,957.34	\$ 20,356.43	0.44%
\$ 17,399.09	\$ 30,176.21	\$ 47,575.30	1.03%
\$ 17,399.09	\$ 4,324.40	\$ 21,723.49	0.47%
\$ 17,399.09	\$ 2,665.39	\$ 20,064.48	0.43%
\$ 17,399.09	\$ 70,175.96	\$ 87,575.05	1.89%
	\$ 63,144.55	\$ 63,144.55	1.36%
	\$ 156,887.79	\$ 156,887.79	3.38%
\$ 17,399.09	\$ 6,733.15	\$ 24,132.24	0.52%
\$ 295,784.51	\$ 1,927,997.26	\$ 2,223,781.77	47.93%

\$ 35,085.22	0.76%
\$ 20,631.77	0.44%
\$ 21,011.99	0.45%
\$ 19,367.76	0.42%
\$ 96,096.73	2.07%

\$ 2,251,540.87	48.53%
\$ 68,337.63	1.47%
\$ 2,319,878.50	50.00%

FFY2020 Award	\$ 4,639,757.00	100.00%
----------------------	------------------------	----------------

% Change from Last FFY 1.93560%

Allocation Change	% Change
Reduction/Increase	
(19,527.46)	-27.02%
12,269.27	78.97%
(22,328.37)	-79.51%
135,079.00	25.53%
14,267.65	3.64%
5,414.58	3.58%
38,385.27	24.41%
(15,776.40)	-52.59%
(8,898.20)	-15.55%
19,952.78	68.98%
(21,638.74)	-88.62%
17,286.44	2388.75%
17,172.28	1178.58%
12,593.32	81.15%
16,694.03	368.57%
(2,879.30)	-12.20%
10,941.27	26.37%
(366.57)	-1.77%
4,979.30	11.69%
12,673.49	140.04%
3,007.48	17.63%
(73,301.95)	-45.56%
63,144.55	#DIV/0!
14,757.79	10.38%
24,132.24	#DIV/0!
\$ 258,033.76	13.13%

666.22	1.94%
391.77	1.94%
398.99	1.94%
367.76	1.94%
\$ 1,824.73	1.94%

(173,054.12)	-7.14%
1,297.63	1.94%
(171,756.50)	-6.89%

\$ 88,102.00	1.94%
--------------	-------

Draft County & City Allocation by Population & Base

FFY2020 Award \$ 4,639,757.00

Local Governments	2010 Census Population	7/1/18 Population	% of 7/1/18 Population	Standard Allocation 2015-2019	% of Total Allocation
Carson City	55,274	56,057	1.83%	\$ 72,274.00	1.59%
Churchill	16,271	16,503	0.54%	\$ 15,536.00	0.34%
Fallon	8,606	9,125	0.30%	\$ 28,082.25	0.62%
Clark	877,547	1,025,560	33.54%	\$ 529,000.00	11.62%
Las Vegas	583,756	644,113	21.07%	\$ 391,886.00	8.61%
N Las Vegas	216,961	248,701	8.13%	\$ 151,407.00	3.33%
Henderson	257,729	310,244	10.15%	\$ 157,243.03	3.45%
Mesquite	15,276	22,557	0.74%	\$ 30,000.00	0.66%
Douglas	46,997	49,070	1.60%	\$ 57,239.00	1.26%
Elko	44,408	49,920	1.63%	\$ 28,924.00	0.64%
West Wendover	4,410	4,406	0.14%	\$ 24,417.00	0.54%
Esmeralda	783	969	0.03%	\$ 723.66	0.02%
Eureka	1,987	1,951	0.06%	\$ 1,457.03	0.03%
Humboldt	16,528	16,989	0.56%	\$ 15,518.40	0.34%
Lander	5,775	6,065	0.20%	\$ 4,529.42	0.10%
Lincoln	5,345	5,255	0.17%	\$ 23,592.00	0.52%
Lyon	51,980	55,551	1.82%	\$ 41,486.21	0.91%
Mineral	4,772	4,690	0.15%	\$ 20,723.00	0.46%
Nye	43,946	47,856	1.57%	\$ 42,596.00	0.94%
Pershing	6,753	6,858	0.22%	\$ 9,050.00	0.20%
Storey	4,010	4,227	0.14%	\$ 17,057.00	0.37%
Washoe	105,922	111,291	3.64%	\$ 160,877.00	3.53%
Sparks	90,264	100,140	3.28%	\$ -	0.00%
Reno	225,221	248,806	8.14%	\$ 142,130.00	3.12%
White Pine	10,030	10,678	0.35%	\$ -	0.00%
Local Total	2,700,551	3,057,582	100.00%	\$ 1,965,748.00	43.19%

Duck Water Shoshone				\$ 34,419.00	0.76%
Fallon Paiute -Shoshone				\$ 20,240.00	0.44%
Pyramid Lake Paiute				\$ 20,613.00	0.45%
Reno-Sparks Indian Colony				\$ 19,000.00	0.42%
Tribal Total				\$ 94,272.00	2.07%

State Allocation				\$ 2,424,595.00	53.27%
Nevada Tribal Emergency Coordinating Council				\$ 67,040.00	1.47%
State Total				\$ 2,491,635.00	54.74%

FFY19 Award Total				\$ 4,551,655.00	100.00%
--------------------------	--	--	--	------------------------	----------------

Base Allocation	Population Allocation		% of Total
1.00%	\$ 1,829,402.42	Base +Pop	Allocation
\$ 23,198.79	\$ 33,539.84	\$ 56,738.63	1.22%
\$ 23,198.79	\$ 9,874.02	\$ 33,072.81	0.71%
	\$ 5,459.64	\$ 5,459.64	0.12%
\$ 23,198.79	\$ 613,609.69	\$ 636,808.48	13.73%
	\$ 385,383.58	\$ 385,383.58	8.31%
	\$ 148,801.97	\$ 148,801.97	3.21%
	\$ 185,624.17	\$ 185,624.17	4.00%
	\$ 13,496.23	\$ 13,496.23	0.29%
\$ 23,198.79	\$ 29,359.40	\$ 52,558.19	1.13%
\$ 23,198.79	\$ 29,867.97	\$ 53,066.76	1.14%
	\$ 2,636.18	\$ 2,636.18	0.06%
\$ 23,198.79	\$ 579.77	\$ 23,778.55	0.51%
\$ 23,198.79	\$ 1,167.32	\$ 24,366.10	0.53%
\$ 23,198.79	\$ 10,164.80	\$ 33,363.59	0.72%
\$ 23,198.79	\$ 3,628.79	\$ 26,827.58	0.58%
\$ 23,198.79	\$ 3,144.15	\$ 26,342.94	0.57%
\$ 23,198.79	\$ 33,237.09	\$ 56,435.88	1.22%
\$ 23,198.79	\$ 2,806.11	\$ 26,004.89	0.56%
\$ 23,198.79	\$ 28,633.04	\$ 51,831.83	1.12%
\$ 23,198.79	\$ 4,103.26	\$ 27,302.04	0.59%
\$ 23,198.79	\$ 2,529.08	\$ 25,727.87	0.55%
\$ 23,198.79	\$ 66,587.27	\$ 89,786.05	1.94%
	\$ 59,915.44	\$ 59,915.44	1.29%
	\$ 148,864.79	\$ 148,864.79	3.21%
\$ 23,198.79	\$ 6,388.83	\$ 29,587.61	0.64%
\$ 394,379.35	\$ 1,829,402.42	\$ 2,223,781.77	47.93%

Allocation Change	% Change
Reduction/Increase	
(15,535.37)	-21.50%
17,536.81	112.88%
(22,622.61)	-80.56%
107,808.48	20.38%
(6,502.42)	-1.66%
(2,605.03)	-1.72%
28,381.14	18.05%
(16,503.77)	-55.01%
(4,680.81)	-8.18%
24,142.76	83.47%
(21,780.82)	-89.20%
23,054.89	3185.87%
22,909.07	1572.31%
17,845.19	114.99%
22,298.16	492.30%
2,750.94	11.66%
14,949.67	36.04%
5,281.89	25.49%
9,235.83	21.68%
18,252.04	201.68%
8,670.87	50.83%
(71,090.95)	-44.19%
59,915.44	#DIV/0!
6,734.79	4.74%
29,587.61	#DIV/0!
\$ 258,033.76	13.13%

\$ 35,085.22	0.76%
\$ 20,631.77	0.44%
\$ 21,011.99	0.45%
\$ 19,367.76	0.42%
\$ 96,096.73	2.07%

666.22	1.94%
391.77	1.94%
398.99	1.94%
367.76	1.94%
\$ 1,824.73	1.94%

\$ 2,251,540.87	48.53%
\$ 68,337.63	1.47%
\$ 2,319,878.50	50.00%

(173,054.12)	-7.14%
1,297.63	1.94%
(171,756.50)	-6.89%

FFY2020 Award \$ 4,639,757.00 100.00%

% Change from Last FFY 1.93560%

\$ 88,102.00 1.94%

Draft County & City Allocation by Population & Base

FFY2020 Award \$ 4,639,757.00

Local Governments	2010 Census Population	7/1/18 Population	% of 7/1/18 Population	Standard Allocation 2015-2019	% of Total Allocation
Carson City	55,274	56,057	1.83%	\$ 72,274.00	1.59%
Churchill	16,271	16,503	0.54%	\$ 15,536.00	0.34%
Fallon	8,606	9,125	0.30%	\$ 28,082.25	0.62%
Clark	877,547	1,025,560	33.54%	\$ 529,000.00	11.62%
Las Vegas	583,756	644,113	21.07%	\$ 391,886.00	8.61%
N Las Vegas	216,961	248,701	8.13%	\$ 151,407.00	3.33%
Henderson	257,729	310,244	10.15%	\$ 157,243.03	3.45%
Mesquite	15,276	22,557	0.74%	\$ 30,000.00	0.66%
Douglas	46,997	49,070	1.60%	\$ 57,239.00	1.26%
Elko	44,408	49,920	1.63%	\$ 28,924.00	0.64%
West Wendover	4,410	4,406	0.14%	\$ 24,417.00	0.54%
Esmeralda	783	969	0.03%	\$ 723.66	0.02%
Eureka	1,987	1,951	0.06%	\$ 1,457.03	0.03%
Humboldt	16,528	16,989	0.56%	\$ 15,518.40	0.34%
Lander	5,775	6,065	0.20%	\$ 4,529.42	0.10%
Lincoln	5,345	5,255	0.17%	\$ 23,592.00	0.52%
Lyon	51,980	55,551	1.82%	\$ 41,486.21	0.91%
Mineral	4,772	4,690	0.15%	\$ 20,723.00	0.46%
Nye	43,946	47,856	1.57%	\$ 42,596.00	0.94%
Pershing	6,753	6,858	0.22%	\$ 9,050.00	0.20%
Storey	4,010	4,227	0.14%	\$ 17,057.00	0.37%
Washoe	105,922	111,291	3.64%	\$ 160,877.00	3.53%
Sparks	90,264	100,140	3.28%	\$ -	0.00%
Reno	225,221	248,806	8.14%	\$ 142,130.00	3.12%
White Pine	10,030	10,678	0.35%	\$ -	0.00%
Local Total	2,700,551	3,057,582	100.00%	\$ 1,965,748.00	43.19%

Duck Water Shoshone				\$ 34,419.00	0.76%
Fallon Paiute -Shoshone				\$ 20,240.00	0.44%
Pyramid Lake Paiute				\$ 20,613.00	0.45%
Reno-Sparks Indian Colony				\$ 19,000.00	0.42%
Tribal Total				\$ 94,272.00	2.07%

State Allocation				\$ 2,424,595.00	53.27%
Nevada Tribal Emergency Coordinating Council				\$ 67,040.00	1.47%
State Total				\$ 2,491,635.00	54.74%

FFY19 Award Total				\$ 4,551,655.00	100.00%
--------------------------	--	--	--	------------------------	----------------

Base Allocation	Population Allocation		% of Total
1.25%	\$ 1,730,807.59	Base +Pop	Allocation
\$ 28,998.48	\$ 31,732.23	\$ 60,730.71	1.31%
\$ 28,998.48	\$ 9,341.86	\$ 38,340.35	0.83%
	\$ 5,165.40	\$ 5,165.40	0.11%
\$ 28,998.48	\$ 580,539.47	\$ 609,537.95	13.14%
	\$ 364,613.50	\$ 364,613.50	7.86%
	\$ 140,782.35	\$ 140,782.35	3.03%
	\$ 175,620.04	\$ 175,620.04	3.79%
	\$ 12,768.86	\$ 12,768.86	0.28%
\$ 28,998.48	\$ 27,777.09	\$ 56,775.57	1.22%
\$ 28,998.48	\$ 28,258.25	\$ 57,256.73	1.23%
	\$ 2,494.11	\$ 2,494.11	0.05%
\$ 28,998.48	\$ 548.52	\$ 29,547.00	0.64%
\$ 28,998.48	\$ 1,104.40	\$ 30,102.89	0.65%
\$ 28,998.48	\$ 9,616.98	\$ 38,615.46	0.83%
\$ 28,998.48	\$ 3,433.22	\$ 32,431.70	0.70%
\$ 28,998.48	\$ 2,974.70	\$ 31,973.18	0.69%
\$ 28,998.48	\$ 31,445.79	\$ 60,444.27	1.30%
\$ 28,998.48	\$ 2,654.87	\$ 31,653.35	0.68%
\$ 28,998.48	\$ 27,089.88	\$ 56,088.36	1.21%
\$ 28,998.48	\$ 3,882.11	\$ 32,880.59	0.71%
\$ 28,998.48	\$ 2,392.78	\$ 31,391.26	0.68%
\$ 28,998.48	\$ 62,998.57	\$ 91,997.06	1.98%
	\$ 56,686.32	\$ 56,686.32	1.22%
	\$ 140,841.79	\$ 140,841.79	3.04%
\$ 28,998.48	\$ 6,044.50	\$ 35,042.98	0.76%
\$ 492,974.18	\$ 1,730,807.59	\$ 2,223,781.77	47.93%

\$ 35,085.22	0.76%
\$ 20,631.77	0.44%
\$ 21,011.99	0.45%
\$ 19,367.76	0.42%
\$ 96,096.73	2.07%

\$ 2,251,540.87	48.53%
\$ 68,337.63	1.47%
\$ 2,319,878.50	50.00%

FFY2020 Award	\$ 4,639,757.00	100.00%
----------------------	------------------------	----------------

% Change from Last FFY 1.93560%

Allocation Change	% Change
Reduction/Increase	
(11,543.29)	-15.97%
22,804.35	146.78%
(22,916.85)	-81.61%
80,537.95	15.22%
(27,272.50)	-6.96%
(10,624.65)	-7.02%
18,377.01	11.69%
(17,231.14)	-57.44%
(463.43)	-0.81%
28,332.73	97.96%
(21,922.89)	-89.79%
28,823.34	3982.99%
28,645.85	1966.04%
23,097.06	148.84%
27,902.28	616.02%
8,381.18	35.53%
18,958.07	45.70%
10,930.35	52.75%
13,492.36	31.68%
23,830.59	263.32%
14,334.26	84.04%
(68,879.94)	-42.82%
56,686.32	#DIV/0!
(1,288.21)	-0.91%
35,042.98	#DIV/0!
\$ 258,033.76	13.13%

666.22	1.94%
391.77	1.94%
398.99	1.94%
367.76	1.94%
\$ 1,824.73	1.94%

(173,054.12)	-7.14%
1,297.63	1.94%
\$ (171,756.50)	-6.89%

\$ 88,102.00	1.94%
---------------------	--------------

AGENDA ITEM #9 H1

Counties Only	2010 Census Population	7/1/18 Population	# Change	% Change
Carson City	55,274	56,057	783	1.42%
Churchill	16,271	16,503	232	1.43%
Fallon	8,606	9,125	519	6.03%
Clark	877,547	1,025,560	148,013	16.87%
Las Vegas	583,756	644,113	60,357	10.34%
N Las Vegas	216,961	248,701	31,740	14.63%
Henderson	257,729	310,244	52,515	20.38%
Mesquite	15,276	22,557	7,281	47.66%
Douglas	46,997	49,070	2,073	4.41%
Elko	44,408	49,920	5,512	12.41%
West Wendover	4,410	4,406	(4)	-0.09%
Esmeralda	783	969	186	23.75%
Eureka	1,987	1,951	(36)	-1.81%
Humboldt	16,528	16,989	461	2.79%
Lander	5,775	6,065	290	5.02%
Lincoln	5,345	5,255	(90)	-1.68%
Lyon	51,980	55,551	3,571	6.87%
Mineral	4,772	4,690	(82)	-1.72%
Nye	43,946	47,856	3,910	8.90%
Pershing	6,753	6,858	105	1.55%
Storey	4,010	4,227	217	5.41%
Washoe	105,922	111,291	5,369	5.07%
Sparks	90,264	100,140	9,876	10.94%
Reno	225,221	248,806	23,585	10.47%
White Pine	10,030	10,678	648	6.46%
Nevada Counties	<u>2,700,551</u>	<u>3,057,582</u>	<u>357,031</u>	<u>13.22%</u>

Agenda Item #10c

Draft County & City Allocation by Population & Base

FFY2020 Award \$ 4,639,757.00

Local Governments	2010 Census Population	7/1/18 Population	% of 7/1/18 Population	Standard Allocation 2015-2019	% of Total Allocation
Carson City	55,274	56,057	1.83%	\$ 72,274.00	1.59%
Churchill	16,271	16,503	0.54%	\$ 15,536.00	0.34%
Fallon	8,606	9,125	0.30%	\$ 28,082.25	0.62%
Clark	877,547	1,025,560	33.54%	\$ 529,000.00	11.62%
Las Vegas	583,756	644,113	21.07%	\$ 391,886.00	8.61%
N Las Vegas	216,961	248,701	8.13%	\$ 151,407.00	3.33%
Henderson	257,729	310,244	10.15%	\$ 157,243.03	3.45%
Mesquite	15,276	22,557	0.74%	\$ 30,000.00	0.66%
Douglas	46,997	49,070	1.60%	\$ 57,239.00	1.26%
Elko	44,408	49,920	1.63%	\$ 28,924.00	0.64%
West Wendover	4,410	4,406	0.14%	\$ 24,417.00	0.54%
Esmeralda	783	969	0.03%	\$ 723.66	0.02%
Eureka	1,987	1,951	0.06%	\$ 1,457.03	0.03%
Humboldt	16,528	16,989	0.56%	\$ 15,518.40	0.34%
Lander	5,775	6,065	0.20%	\$ 4,529.42	0.10%
Lincoln	5,345	5,255	0.17%	\$ 23,592.00	0.52%
Lyon	51,980	55,551	1.82%	\$ 41,486.21	0.91%
Mineral	4,772	4,690	0.15%	\$ 20,723.00	0.46%
Nye	43,946	47,856	1.57%	\$ 42,596.00	0.94%
Pershing	6,753	6,858	0.22%	\$ 9,050.00	0.20%
Storey	4,010	4,227	0.14%	\$ 17,057.00	0.37%
Washoe	105,922	111,291	3.64%	\$ 160,877.00	3.53%
Sparks	90,264	100,140	3.28%	\$ -	0.00%
Reno	225,221	248,806	8.14%	\$ 142,130.00	3.12%
White Pine	10,030	10,678	0.35%	\$ -	0.00%
Local Total	2,700,551	3,057,582	100.00%	\$ 1,965,748.00	43.19%

County >100K	Base Allocation	Population Allocation	Base +Pop	% of Total Allocation
2.00%	0.50%	\$ 1,841,001.82		
	\$ 11,599.39	\$ 33,752.50	\$ 45,351.89	0.98%
	\$ 11,599.39	\$ 9,936.63	\$ 21,536.02	0.46%
	\$ 11,599.39	\$ 5,494.26	\$ 17,093.65	0.37%
\$ 46,397.57	\$ 11,599.39	\$ 617,500.31	\$ 675,497.27	14.56%
	\$ 11,599.39	\$ 387,827.11	\$ 399,426.51	8.61%
	\$ 11,599.39	\$ 149,745.45	\$ 161,344.84	3.48%
	\$ 11,599.39	\$ 186,801.13	\$ 198,400.52	4.28%
	\$ 11,599.39	\$ 13,581.80	\$ 25,181.20	0.54%
	\$ 11,599.39	\$ 29,545.56	\$ 41,144.95	0.89%
	\$ 11,599.39	\$ 30,057.35	\$ 41,656.74	0.90%
	\$ 11,599.39	\$ 2,652.90	\$ 14,252.29	0.31%
	\$ 11,599.39	\$ 583.44	\$ 12,182.84	0.26%
	\$ 11,599.39	\$ 1,174.72	\$ 12,774.11	0.28%
	\$ 11,599.39	\$ 10,229.25	\$ 21,828.65	0.47%
	\$ 11,599.39	\$ 3,651.80	\$ 15,251.19	0.33%
	\$ 11,599.39	\$ 3,164.09	\$ 14,763.48	0.32%
	\$ 11,599.39	\$ 33,447.83	\$ 45,047.23	0.97%
	\$ 11,599.39	\$ 2,823.90	\$ 14,423.29	0.31%
	\$ 11,599.39	\$ 28,814.59	\$ 40,413.99	0.87%
	\$ 11,599.39	\$ 4,129.27	\$ 15,728.67	0.34%
	\$ 11,599.39	\$ 2,545.12	\$ 14,144.51	0.30%
\$ 46,397.57	\$ 11,599.39	\$ 67,009.46	\$ 125,006.43	2.69%
	\$ 11,599.39	\$ 60,295.33	\$ 71,894.72	1.55%
	\$ 11,599.39	\$ 149,808.67	\$ 161,408.06	3.48%
	\$ 11,599.39	\$ 6,429.33	\$ 18,028.73	0.39%
\$ 92,795.14	\$ 289,984.81	\$ 1,841,001.82	\$ 2,223,781.77	47.93%

Allocation Change Reduction/Increase	% Change
(26,922.11)	-37.25%
6,000.02	38.62%
(10,988.60)	-39.13%
146,497.27	27.69%
7,540.51	1.92%
9,937.84	6.56%
41,157.49	26.17%
(4,818.80)	-16.06%
(16,094.05)	-28.12%
12,732.74	44.02%
(10,164.71)	-41.63%
11,459.18	1583.50%
11,317.08	776.72%
6,310.25	40.66%
10,721.77	236.71%
(8,828.52)	-37.42%
3,561.02	8.58%
(6,299.71)	-30.40%
(2,182.01)	-5.12%
6,678.67	73.80%
(2,912.49)	-17.08%
(35,870.57)	-22.30%
71,894.72	#DIV/0!
19,278.06	13.56%
18,028.73	#DIV/0!
\$ 258,033.76	13.13%

Duck Water Shoshone			\$ 34,419.00	0.76%
Fallon Paiute -Shoshone			\$ 20,240.00	0.44%
Pyramid Lake Paiute			\$ 20,613.00	0.45%
Reno-Sparks Indian Colony			\$ 19,000.00	0.42%
Tribal Total			\$ 94,272.00	2.07%

\$ 35,085.22	0.76%
\$ 20,631.77	0.44%
\$ 21,011.99	0.45%
\$ 19,367.76	0.42%
\$ 96,096.73	2.07%

666.22	1.94%
391.77	1.94%
398.99	1.94%
367.76	1.94%
\$ 1,824.73	1.94%

State Allocation			\$ 2,424,595.00	53.27%
Nevada Tribal Emergency Coordinating Council			\$ 67,040.00	1.47%
State Total			\$ 2,491,635.00	54.74%

\$ 2,251,540.87	48.53%
\$ 68,337.63	1.47%
\$ 2,319,878.50	50.00%

(173,054.12)	-7.14%
1,297.63	1.94%
\$ (171,756.50)	-6.89%

FFY19 Award Total			\$ 4,551,655.00	100.00%
--------------------------	--	--	------------------------	----------------

FFY2020 Award \$ 4,639,757.00 100.00%

\$ 88,102.00	1.94%
--------------	-------

% Change from Last FFY 1.93560%

Draft County & City Allocation by Population & Base

FFY2020 Award \$ 4,639,757.00

Local Governments	2010 Census Population	7/1/18 Population	% of 7/1/18 Population	Standard Allocation 2015-2019	% of Total Allocation
Carson City	55,274	56,057	1.83%	\$ 72,274.00	1.59%
Churchill	16,271	16,503	0.54%	\$ 15,536.00	0.34%
Fallon	8,606	9,125	0.30%	\$ 28,082.25	0.62%
Clark	877,547	1,025,560	33.54%	\$ 529,000.00	11.62%
Las Vegas	583,756	644,113	21.07%	\$ 391,886.00	8.61%
N Las Vegas	216,961	248,701	8.13%	\$ 151,407.00	3.33%
Henderson	257,729	310,244	10.15%	\$ 157,243.03	3.45%
Mesquite	15,276	22,557	0.74%	\$ 30,000.00	0.66%
Douglas	46,997	49,070	1.60%	\$ 57,239.00	1.26%
Elko	44,408	49,920	1.63%	\$ 28,924.00	0.64%
West Wendover	4,410	4,406	0.14%	\$ 24,417.00	0.54%
Esmeralda	783	969	0.03%	\$ 723.66	0.02%
Eureka	1,987	1,951	0.06%	\$ 1,457.03	0.03%
Humboldt	16,528	16,989	0.56%	\$ 15,518.40	0.34%
Lander	5,775	6,065	0.20%	\$ 4,529.42	0.10%
Lincoln	5,345	5,255	0.17%	\$ 23,592.00	0.52%
Lyon	51,980	55,551	1.82%	\$ 41,486.21	0.91%
Mineral	4,772	4,690	0.15%	\$ 20,723.00	0.46%
Nye	43,946	47,856	1.57%	\$ 42,596.00	0.94%
Pershing	6,753	6,858	0.22%	\$ 9,050.00	0.20%
Storey	4,010	4,227	0.14%	\$ 17,057.00	0.37%
Washoe	105,922	111,291	3.64%	\$ 160,877.00	3.53%
Sparks	90,264	100,140	3.28%	\$ -	0.00%
Reno	225,221	248,806	8.14%	\$ 142,130.00	3.12%
White Pine	10,030	10,678	0.35%	\$ -	0.00%
Local Total	2,700,551	3,057,582	100.00%	\$ 1,965,748.00	43.19%

Duck Water Shoshone				\$ 34,419.00	0.76%
Fallon Paiute -Shoshone				\$ 20,240.00	0.44%
Pyramid Lake Paiute				\$ 20,613.00	0.45%
Reno-Sparks Indian Colony				\$ 19,000.00	0.42%
Tribal Total				\$ 94,272.00	2.07%

State Allocation				\$ 2,424,595.00	53.27%
Nevada Tribal Emergency Coordinating Council				\$ 67,040.00	1.47%
State Total				\$ 2,491,635.00	54.74%

FFY19 Award Total				\$ 4,551,655.00	100.00%
--------------------------	--	--	--	------------------------	----------------

County >100K	Base Allocation	Population Allocation		% of Total Allocation
2.00%	0.75%	\$ 1,696,009.41	Base +Pop	
	\$ 17,399.09	\$ 31,094.24	\$ 48,493.33	1.05%
	\$ 17,399.09	\$ 9,154.05	\$ 26,553.13	0.57%
	\$ 17,399.09	\$ 5,061.54	\$ 22,460.63	0.48%
\$ 46,397.57	\$ 17,399.09	\$ 568,867.62	\$ 632,664.28	13.64%
	\$ 17,399.09	\$ 357,282.88	\$ 374,681.97	8.08%
	\$ 17,399.09	\$ 137,951.90	\$ 155,350.99	3.35%
	\$ 17,399.09	\$ 172,089.17	\$ 189,488.26	4.08%
	\$ 17,399.09	\$ 12,512.14	\$ 29,911.23	0.64%
	\$ 17,399.09	\$ 27,218.63	\$ 44,617.72	0.96%
	\$ 17,399.09	\$ 27,690.11	\$ 45,089.20	0.97%
	\$ 17,399.09	\$ 2,443.96	\$ 19,843.05	0.43%
	\$ 17,399.09	\$ 537.49	\$ 17,936.58	0.39%
	\$ 17,399.09	\$ 1,082.20	\$ 18,481.29	0.40%
	\$ 17,399.09	\$ 9,423.62	\$ 26,822.71	0.58%
	\$ 17,399.09	\$ 3,364.19	\$ 20,763.28	0.45%
	\$ 17,399.09	\$ 2,914.89	\$ 20,313.98	0.44%
	\$ 17,399.09	\$ 30,813.57	\$ 48,212.66	1.04%
	\$ 17,399.09	\$ 2,601.49	\$ 20,000.58	0.43%
	\$ 17,399.09	\$ 26,545.23	\$ 43,944.32	0.95%
	\$ 17,399.09	\$ 3,804.06	\$ 21,203.15	0.46%
	\$ 17,399.09	\$ 2,344.67	\$ 19,743.76	0.43%
\$ 46,397.57	\$ 17,399.09	\$ 61,731.98	\$ 125,528.64	2.71%
	\$ 17,399.09	\$ 55,546.63	\$ 72,945.72	1.57%
	\$ 17,399.09	\$ 138,010.14	\$ 155,409.23	3.35%
	\$ 17,399.09	\$ 5,922.98	\$ 23,322.07	0.50%
\$ 92,795.14	\$ 434,977.22	\$ 1,696,009.41	\$ 2,223,781.77	47.93%

\$ 35,085.22	0.76%
\$ 20,631.77	0.44%
\$ 21,011.99	0.45%
\$ 19,367.76	0.42%
\$ 96,096.73	2.07%

\$ 2,251,540.87	48.53%
\$ 68,337.63	1.47%
\$ 2,319,878.50	50.00%

FFY2020 Award	\$ 4,639,757.00	100.00%
----------------------	------------------------	----------------

% Change from Last FFY 1.93560%

Allocation Change Reduction/Increase	% Change
(23,780.67)	-32.90%
11,017.13	70.91%
(5,621.62)	-20.02%
103,664.28	19.60%
(17,204.03)	-4.39%
3,943.99	2.60%
32,245.23	20.51%
(88.77)	-0.30%
(12,621.28)	-22.05%
16,165.20	55.89%
(4,573.95)	-18.73%
17,212.92	2378.59%
17,024.26	1168.42%
11,304.31	72.84%
16,233.86	358.41%
(3,278.02)	-13.89%
6,726.45	16.21%
(722.42)	-3.49%
1,348.32	3.17%
12,153.15	134.29%
2,686.76	15.75%
(35,348.36)	-21.97%
72,945.72	#DIV/0!
13,279.23	9.34%
23,322.07	#DIV/0!
\$ 258,033.76	13.13%

666.22	1.94%
391.77	1.94%
398.99	1.94%
367.76	1.94%
\$ 1,824.73	1.94%

(173,054.12)	-7.14%
1,297.63	1.94%
(171,756.50)	-6.89%

\$ 88,102.00	1.94%
--------------	-------

Draft County & City Allocation by Population & Base

FFY2020 Award \$ 4,639,757.00

Local Governments	2010 Census Population	7/1/18 Population	% of 7/1/18 Population	Standard Allocation 2015-2019	% of Total Allocation
Carson City	55,274	56,057	1.83%	\$ 72,274.00	1.59%
Churchill	16,271	16,503	0.54%	\$ 15,536.00	0.34%
Fallon	8,606	9,125	0.30%	\$ 28,082.25	0.62%
Clark	877,547	1,025,560	33.54%	\$ 529,000.00	11.62%
Las Vegas	583,756	644,113	21.07%	\$ 391,886.00	8.61%
N Las Vegas	216,961	248,701	8.13%	\$ 151,407.00	3.33%
Henderson	257,729	310,244	10.15%	\$ 157,243.03	3.45%
Mesquite	15,276	22,557	0.74%	\$ 30,000.00	0.66%
Douglas	46,997	49,070	1.60%	\$ 57,239.00	1.26%
Elko	44,408	49,920	1.63%	\$ 28,924.00	0.64%
West Wendover	4,410	4,406	0.14%	\$ 24,417.00	0.54%
Esmeralda	783	969	0.03%	\$ 723.66	0.02%
Eureka	1,987	1,951	0.06%	\$ 1,457.03	0.03%
Humboldt	16,528	16,989	0.56%	\$ 15,518.40	0.34%
Lander	5,775	6,065	0.20%	\$ 4,529.42	0.10%
Lincoln	5,345	5,255	0.17%	\$ 23,592.00	0.52%
Lyon	51,980	55,551	1.82%	\$ 41,486.21	0.91%
Mineral	4,772	4,690	0.15%	\$ 20,723.00	0.46%
Nye	43,946	47,856	1.57%	\$ 42,596.00	0.94%
Pershing	6,753	6,858	0.22%	\$ 9,050.00	0.20%
Storey	4,010	4,227	0.14%	\$ 17,057.00	0.37%
Washoe	105,922	111,291	3.64%	\$ 160,877.00	3.53%
Sparks	90,264	100,140	3.28%	\$ -	0.00%
Reno	225,221	248,806	8.14%	\$ 142,130.00	3.12%
White Pine	10,030	10,678	0.35%	\$ -	0.00%
Local Total	2,700,551	3,057,582	100.00%	\$ 1,965,748.00	43.19%

Duck Water Shoshone				\$ 34,419.00	0.76%
Fallon Paiute -Shoshone				\$ 20,240.00	0.44%
Pyramid Lake Paiute				\$ 20,613.00	0.45%
Reno-Sparks Indian Colony				\$ 19,000.00	0.42%
Tribal Total				\$ 94,272.00	2.07%

State Allocation				\$ 2,424,595.00	53.27%
Nevada Tribal Emergency Coordinating Council				\$ 67,040.00	1.47%
State Total				\$ 2,491,635.00	54.74%

FFY19 Award Total				\$ 4,551,655.00	100.00%
--------------------------	--	--	--	------------------------	----------------

County >100K	Base Allocation	Population Allocation		% of Total Allocation
2.00%	1.00%	\$ 1,551,017.00	Base +Pop	
	\$ 23,198.79	\$ 28,435.99	\$ 51,634.77	1.11%
	\$ 23,198.79	\$ 8,371.46	\$ 31,570.25	0.68%
	\$ 23,198.79	\$ 4,628.83	\$ 27,827.62	0.60%
\$ 46,397.57	\$ 23,198.79	\$ 520,234.94	\$ 589,831.30	12.71%
	\$ 23,198.79	\$ 326,738.65	\$ 349,937.43	7.54%
	\$ 23,198.79	\$ 126,158.34	\$ 149,357.13	3.22%
	\$ 23,198.79	\$ 157,377.21	\$ 180,575.99	3.89%
	\$ 23,198.79	\$ 11,442.47	\$ 34,641.26	0.75%
	\$ 23,198.79	\$ 24,891.70	\$ 48,090.48	1.04%
	\$ 23,198.79	\$ 25,322.88	\$ 48,521.66	1.05%
	\$ 23,198.79	\$ 2,235.03	\$ 25,433.81	0.55%
	\$ 23,198.79	\$ 491.54	\$ 23,690.33	0.51%
	\$ 23,198.79	\$ 989.68	\$ 24,188.47	0.52%
	\$ 23,198.79	\$ 8,618.00	\$ 31,816.78	0.69%
	\$ 23,198.79	\$ 3,076.59	\$ 26,275.37	0.57%
	\$ 23,198.79	\$ 2,665.70	\$ 25,864.48	0.56%
	\$ 23,198.79	\$ 28,179.31	\$ 51,378.09	1.11%
	\$ 23,198.79	\$ 2,379.09	\$ 25,577.88	0.55%
	\$ 23,198.79	\$ 24,275.87	\$ 47,474.66	1.02%
	\$ 23,198.79	\$ 3,478.85	\$ 26,677.64	0.57%
	\$ 23,198.79	\$ 2,144.23	\$ 25,343.01	0.55%
\$ 46,397.57	\$ 23,198.79	\$ 56,454.49	\$ 126,050.85	2.72%
	\$ 23,198.79	\$ 50,797.93	\$ 73,996.72	1.59%
	\$ 23,198.79	\$ 126,211.61	\$ 149,410.39	3.22%
	\$ 23,198.79	\$ 5,416.62	\$ 28,615.40	0.62%
\$ 92,795.14	\$ 579,969.63	\$ 1,551,017.00	\$ 2,223,781.77	47.93%

\$ 35,085.22	0.76%
\$ 20,631.77	0.44%
\$ 21,011.99	0.45%
\$ 19,367.76	0.42%
\$ 96,096.73	2.07%

\$ 2,251,540.87	48.53%
\$ 68,337.63	1.47%
\$ 2,319,878.50	50.00%

FFY2020 Award	\$ 4,639,757.00	100.00%
----------------------	------------------------	----------------

% Change from Last FFY 1.93560%

Allocation Change Reduction/Increase	% Change
(20,639.23)	-28.56%
16,034.25	103.21%
(254.63)	-0.91%
60,831.30	11.50%
(41,948.57)	-10.70%
(2,049.87)	-1.35%
23,332.96	14.84%
4,641.26	15.47%
(9,148.52)	-15.98%
19,597.66	67.76%
1,016.81	4.16%
22,966.67	3173.67%
22,731.43	1560.12%
16,298.38	105.03%
21,745.95	480.10%
2,272.48	9.63%
9,891.88	23.84%
4,854.88	23.43%
4,878.66	11.45%
17,627.64	194.78%
8,286.01	48.58%
(34,826.15)	-21.65%
73,996.72	#DIV/0!
7,280.39	5.12%
28,615.40	#DIV/0!
\$ 258,033.76	13.13%

666.22	1.94%
391.77	1.94%
398.99	1.94%
367.76	1.94%
\$ 1,824.73	1.94%

(173,054.12)	-7.14%
1,297.63	1.94%
(171,756.50)	-6.89%

\$ 88,102.00	1.94%
--------------	-------

Draft County & City Allocation by Population & Base

FFY2020 Award \$ 4,639,757.00

Local Governments	2010 Census Population	7/1/18 Population	% of 7/1/18 Population	Standard Allocation 2015-2019	% of Total Allocation
Carson City	55,274	56,057	1.83%	\$ 72,274.00	1.59%
Churchill	16,271	16,503	0.54%	\$ 15,536.00	0.34%
Fallon	8,606	9,125	0.30%	\$ 28,082.25	0.62%
Clark	877,547	1,025,560	33.54%	\$ 529,000.00	11.62%
Las Vegas	583,756	644,113	21.07%	\$ 391,886.00	8.61%
N Las Vegas	216,961	248,701	8.13%	\$ 151,407.00	3.33%
Henderson	257,729	310,244	10.15%	\$ 157,243.03	3.45%
Mesquite	15,276	22,557	0.74%	\$ 30,000.00	0.66%
Douglas	46,997	49,070	1.60%	\$ 57,239.00	1.26%
Elko	44,408	49,920	1.63%	\$ 28,924.00	0.64%
West Wendover	4,410	4,406	0.14%	\$ 24,417.00	0.54%
Esmeralda	783	969	0.03%	\$ 723.66	0.02%
Eureka	1,987	1,951	0.06%	\$ 1,457.03	0.03%
Humboldt	16,528	16,989	0.56%	\$ 15,518.40	0.34%
Lander	5,775	6,065	0.20%	\$ 4,529.42	0.10%
Lincoln	5,345	5,255	0.17%	\$ 23,592.00	0.52%
Lyon	51,980	55,551	1.82%	\$ 41,486.21	0.91%
Mineral	4,772	4,690	0.15%	\$ 20,723.00	0.46%
Nye	43,946	47,856	1.57%	\$ 42,596.00	0.94%
Pershing	6,753	6,858	0.22%	\$ 9,050.00	0.20%
Storey	4,010	4,227	0.14%	\$ 17,057.00	0.37%
Washoe	105,922	111,291	3.64%	\$ 160,877.00	3.53%
Sparks	90,264	100,140	3.28%	\$ -	0.00%
Reno	225,221	248,806	8.14%	\$ 142,130.00	3.12%
White Pine	10,030	10,678	0.35%	\$ -	0.00%
Local Total	2,700,551	3,057,582	100.00%	\$ 1,965,748.00	43.19%

County >100K	Base Allocation	Population Allocation	Base +Pop	% of Total Allocation
2.00%	0.50%	\$ 1,933,796.96		
	\$ 11,599.39	\$ 35,453.79	\$ 47,053.18	1.01%
	\$ 11,599.39	\$ 10,437.48	\$ 22,036.87	0.47%
		\$ 5,771.19	\$ 5,771.19	0.12%
\$ 46,397.57	\$ 11,599.39	\$ 648,625.22	\$ 706,622.19	15.23%
		\$ 407,375.42	\$ 407,375.42	8.78%
		\$ 157,293.32	\$ 157,293.32	3.39%
		\$ 196,216.78	\$ 196,216.78	4.23%
		\$ 14,266.39	\$ 14,266.39	0.31%
	\$ 11,599.39	\$ 31,034.79	\$ 42,634.18	0.92%
	\$ 11,599.39	\$ 31,572.38	\$ 43,171.77	0.93%
		\$ 2,786.62	\$ 2,786.62	0.06%
	\$ 11,599.39	\$ 612.85	\$ 12,212.25	0.26%
	\$ 11,599.39	\$ 1,233.93	\$ 12,833.32	0.28%
	\$ 11,599.39	\$ 10,744.86	\$ 22,344.25	0.48%
	\$ 11,599.39	\$ 3,835.87	\$ 15,435.26	0.33%
	\$ 11,599.39	\$ 3,323.57	\$ 14,922.97	0.32%
	\$ 11,599.39	\$ 35,133.76	\$ 46,733.15	1.01%
	\$ 11,599.39	\$ 2,966.24	\$ 14,565.63	0.31%
	\$ 11,599.39	\$ 30,266.98	\$ 41,866.38	0.90%
	\$ 11,599.39	\$ 4,337.41	\$ 15,936.80	0.34%
	\$ 11,599.39	\$ 2,673.41	\$ 14,272.80	0.31%
\$ 46,397.57	\$ 11,599.39	\$ 70,387.06	\$ 128,384.02	2.77%
		\$ 63,334.50	\$ 63,334.50	1.37%
		\$ 157,359.73	\$ 157,359.73	3.39%
	\$ 11,599.39	\$ 6,753.40	\$ 18,352.80	0.40%
\$ 92,795.14	\$ 197,189.67	\$ 1,933,796.96	\$ 2,223,781.77	47.93%

Allocation Change Reduction/Increase	% Change
(25,220.82)	-34.90%
6,500.87	41.84%
(22,311.06)	-79.45%
177,622.19	33.58%
15,489.42	3.95%
5,886.32	3.89%
38,973.75	24.79%
(15,733.61)	-52.45%
(14,604.82)	-25.52%
14,247.77	49.26%
(21,630.38)	-88.59%
11,488.58	1587.56%
11,376.29	780.79%
6,825.85	43.99%
10,905.84	240.78%
(8,669.03)	-36.75%
5,246.94	12.65%
(6,157.37)	-29.71%
(729.62)	-1.71%
6,886.80	76.10%
(2,784.20)	-16.32%
(32,492.98)	-20.20%
63,334.50	#DIV/0!
15,229.73	10.72%
18,352.80	#DIV/0!
\$ 258,033.76	13.13%

Duck Water Shoshone			\$ 34,419.00	0.76%
Fallon Paiute -Shoshone			\$ 20,240.00	0.44%
Pyramid Lake Paiute			\$ 20,613.00	0.45%
Reno-Sparks Indian Colony			\$ 19,000.00	0.42%
Tribal Total			\$ 94,272.00	2.07%

\$ 35,085.22	0.76%
\$ 20,631.77	0.44%
\$ 21,011.99	0.45%
\$ 19,367.76	0.42%
\$ 96,096.73	2.07%

666.22	1.94%
391.77	1.94%
398.99	1.94%
367.76	1.94%
\$ 1,824.73	1.94%

State Allocation			\$ 2,424,595.00	53.27%
Nevada Tribal Emergency Coordinating Council			\$ 67,040.00	1.47%
State Total			\$ 2,491,635.00	54.74%

\$ 2,251,540.87	48.53%
\$ 68,337.63	1.47%
\$ 2,319,878.50	50.00%

(173,054.12)	-7.14%
1,297.63	1.94%
\$ (171,756.50)	-6.89%

FFY19 Award Total			\$ 4,551,655.00	100.00%
--------------------------	--	--	------------------------	----------------

FFY2020 Award \$ 4,639,757.00 100.00%

\$ 88,102.00	1.94%
--------------	-------

% Change from Last FFY 1.93560%

Draft County & City Allocation by Population & Base

FFY2020 Award \$ 4,639,757.00

Local Governments	2010 Census Population	7/1/18 Population	% of 7/1/18 Population	Standard Allocation 2015-2019	% of Total Allocation
Carson City	55,274	56,057	1.83%	\$ 72,274.00	1.59%
Churchill	16,271	16,503	0.54%	\$ 15,536.00	0.34%
Fallon	8,606	9,125	0.30%	\$ 28,082.25	0.62%
Clark	877,547	1,025,560	33.54%	\$ 529,000.00	11.62%
Las Vegas	583,756	644,113	21.07%	\$ 391,886.00	8.61%
N Las Vegas	216,961	248,701	8.13%	\$ 151,407.00	3.33%
Henderson	257,729	310,244	10.15%	\$ 157,243.03	3.45%
Mesquite	15,276	22,557	0.74%	\$ 30,000.00	0.66%
Douglas	46,997	49,070	1.60%	\$ 57,239.00	1.26%
Elko	44,408	49,920	1.63%	\$ 28,924.00	0.64%
West Wendover	4,410	4,406	0.14%	\$ 24,417.00	0.54%
Esmeralda	783	969	0.03%	\$ 723.66	0.02%
Eureka	1,987	1,951	0.06%	\$ 1,457.03	0.03%
Humboldt	16,528	16,989	0.56%	\$ 15,518.40	0.34%
Lander	5,775	6,065	0.20%	\$ 4,529.42	0.10%
Lincoln	5,345	5,255	0.17%	\$ 23,592.00	0.52%
Lyon	51,980	55,551	1.82%	\$ 41,486.21	0.91%
Mineral	4,772	4,690	0.15%	\$ 20,723.00	0.46%
Nye	43,946	47,856	1.57%	\$ 42,596.00	0.94%
Pershing	6,753	6,858	0.22%	\$ 9,050.00	0.20%
Storey	4,010	4,227	0.14%	\$ 17,057.00	0.37%
Washoe	105,922	111,291	3.64%	\$ 160,877.00	3.53%
Sparks	90,264	100,140	3.28%	\$ -	0.00%
Reno	225,221	248,806	8.14%	\$ 142,130.00	3.12%
White Pine	10,030	10,678	0.35%	\$ -	0.00%
Local Total	2,700,551	3,057,582	100.00%	\$ 1,965,748.00	43.19%

County >100K	Base Allocation	Population Allocation	Base +Pop	% of Total Allocation
2.00%	0.75%	\$ 1,835,202.12		
	\$ 17,399.09	\$ 33,646.17	\$ 51,045.26	1.10%
	\$ 17,399.09	\$ 9,905.32	\$ 27,304.41	0.59%
		\$ 5,476.95	\$ 5,476.95	0.12%
\$ 46,397.57	\$ 17,399.09	\$ 615,555.00	\$ 679,351.66	14.64%
		\$ 386,605.34	\$ 386,605.34	8.33%
		\$ 149,273.71	\$ 149,273.71	3.22%
		\$ 186,212.65	\$ 186,212.65	4.01%
		\$ 13,539.02	\$ 13,539.02	0.29%
	\$ 17,399.09	\$ 29,452.48	\$ 46,851.57	1.01%
	\$ 17,399.09	\$ 29,962.66	\$ 47,361.75	1.02%
		\$ 2,644.54	\$ 2,644.54	0.06%
	\$ 17,399.09	\$ 581.61	\$ 17,980.70	0.39%
	\$ 17,399.09	\$ 1,171.02	\$ 18,570.11	0.40%
	\$ 17,399.09	\$ 10,197.03	\$ 27,596.12	0.59%
	\$ 17,399.09	\$ 3,640.30	\$ 21,039.38	0.45%
	\$ 17,399.09	\$ 3,154.12	\$ 20,553.21	0.44%
	\$ 17,399.09	\$ 33,342.46	\$ 50,741.55	1.09%
	\$ 17,399.09	\$ 2,815.00	\$ 20,214.09	0.44%
	\$ 17,399.09	\$ 28,723.82	\$ 46,122.91	0.99%
	\$ 17,399.09	\$ 4,116.26	\$ 21,515.35	0.46%
	\$ 17,399.09	\$ 2,537.10	\$ 19,936.19	0.43%
\$ 46,397.57	\$ 17,399.09	\$ 66,798.37	\$ 130,595.02	2.81%
		\$ 60,105.38	\$ 60,105.38	1.30%
		\$ 149,336.73	\$ 149,336.73	3.22%
	\$ 17,399.09	\$ 6,409.08	\$ 23,808.17	0.51%
\$ 92,795.14	\$ 295,784.51	\$ 1,835,202.12	\$ 2,223,781.77	47.93%

Allocation Change Reduction/Increase	% Change
(21,228.74)	-29.37%
11,768.41	75.75%
(22,605.30)	-80.50%
150,351.66	28.42%
(5,280.66)	-1.35%
(2,133.29)	-1.41%
28,969.62	18.42%
(16,460.98)	-54.87%
(10,387.43)	-18.15%
18,437.75	63.75%
(21,772.46)	-89.17%
17,257.03	2384.68%
17,113.07	1174.52%
12,077.72	77.83%
16,509.96	364.50%
(3,038.79)	-12.88%
9,255.34	22.31%
(508.91)	-2.46%
3,526.91	8.28%
12,465.35	137.74%
2,879.19	16.88%
(30,281.98)	-18.82%
60,105.38	#DIV/0!
7,206.73	5.07%
23,808.17	#DIV/0!
\$ 258,033.76	13.13%

Duck Water Shoshone			\$ 34,419.00	0.76%
Fallon Paiute -Shoshone			\$ 20,240.00	0.44%
Pyramid Lake Paiute			\$ 20,613.00	0.45%
Reno-Sparks Indian Colony			\$ 19,000.00	0.42%
Tribal Total			\$ 94,272.00	2.07%

\$ 35,085.22	0.76%
\$ 20,631.77	0.44%
\$ 21,011.99	0.45%
\$ 19,367.76	0.42%
\$ 96,096.73	2.07%

666.22	1.94%
391.77	1.94%
398.99	1.94%
367.76	1.94%
\$ 1,824.73	1.94%

State Allocation			\$ 2,424,595.00	53.27%
Nevada Tribal Emergency Coordinating Council			\$ 67,040.00	1.47%
State Total			\$ 2,491,635.00	54.74%

\$ 2,251,540.87	48.53%
\$ 68,337.63	1.47%
\$ 2,319,878.50	50.00%

(173,054.12)	-7.14%
1,297.63	1.94%
\$ (171,756.50)	-6.89%

FFY19 Award Total			\$ 4,551,655.00	100.00%
--------------------------	--	--	------------------------	----------------

FFY2020 Award \$ 4,639,757.00 100.00%

\$ 88,102.00	1.94%
--------------	-------

% Change from Last FFY 1.93560%

Draft County & City Allocation by Population & Base

FFY2020 Award \$ 4,639,757.00

Local Governments	2010 Census Population	7/1/18 Population	% of 7/1/18 Population	Standard Allocation 2015-2019	% of Total Allocation
Carson City	55,274	56,057	1.83%	\$ 72,274.00	1.59%
Churchill	16,271	16,503	0.54%	\$ 15,536.00	0.34%
Fallon	8,606	9,125	0.30%	\$ 28,082.25	0.62%
Clark	877,547	1,025,560	33.54%	\$ 529,000.00	11.62%
Las Vegas	583,756	644,113	21.07%	\$ 391,886.00	8.61%
N Las Vegas	216,961	248,701	8.13%	\$ 151,407.00	3.33%
Henderson	257,729	310,244	10.15%	\$ 157,243.03	3.45%
Mesquite	15,276	22,557	0.74%	\$ 30,000.00	0.66%
Douglas	46,997	49,070	1.60%	\$ 57,239.00	1.26%
Elko	44,408	49,920	1.63%	\$ 28,924.00	0.64%
West Wendover	4,410	4,406	0.14%	\$ 24,417.00	0.54%
Esmeralda	783	969	0.03%	\$ 723.66	0.02%
Eureka	1,987	1,951	0.06%	\$ 1,457.03	0.03%
Humboldt	16,528	16,989	0.56%	\$ 15,518.40	0.34%
Lander	5,775	6,065	0.20%	\$ 4,529.42	0.10%
Lincoln	5,345	5,255	0.17%	\$ 23,592.00	0.52%
Lyon	51,980	55,551	1.82%	\$ 41,486.21	0.91%
Mineral	4,772	4,690	0.15%	\$ 20,723.00	0.46%
Nye	43,946	47,856	1.57%	\$ 42,596.00	0.94%
Pershing	6,753	6,858	0.22%	\$ 9,050.00	0.20%
Storey	4,010	4,227	0.14%	\$ 17,057.00	0.37%
Washoe	105,922	111,291	3.64%	\$ 160,877.00	3.53%
Sparks	90,264	100,140	3.28%	\$ -	0.00%
Reno	225,221	248,806	8.14%	\$ 142,130.00	3.12%
White Pine	10,030	10,678	0.35%	\$ -	0.00%
Local Total	2,700,551	3,057,582	100.00%	\$ 1,965,748.00	43.19%

County >100K	Base Allocation	Population Allocation	Base +Pop	% of Total Allocation
2.00%		\$ 1,736,607.28		
	\$ 23,198.79	\$ 31,838.56	\$ 55,037.34	1.19%
	\$ 23,198.79	\$ 9,373.17	\$ 32,571.95	0.70%
		\$ 5,182.70	\$ 5,182.70	0.11%
\$ 46,397.57	\$ 23,198.79	\$ 582,484.78	\$ 652,081.13	14.05%
		\$ 365,835.27	\$ 365,835.27	7.88%
		\$ 141,254.09	\$ 141,254.09	3.04%
		\$ 176,208.52	\$ 176,208.52	3.80%
		\$ 12,811.64	\$ 12,811.64	0.28%
	\$ 23,198.79	\$ 27,870.17	\$ 51,068.95	1.10%
	\$ 23,198.79	\$ 28,352.94	\$ 51,551.72	1.11%
		\$ 2,502.46	\$ 2,502.46	0.05%
	\$ 23,198.79	\$ 550.36	\$ 23,749.15	0.51%
	\$ 23,198.79	\$ 1,108.10	\$ 24,306.89	0.52%
	\$ 23,198.79	\$ 9,649.20	\$ 32,847.99	0.71%
	\$ 23,198.79	\$ 3,444.72	\$ 26,643.51	0.57%
	\$ 23,198.79	\$ 2,984.67	\$ 26,183.45	0.56%
	\$ 23,198.79	\$ 31,551.16	\$ 54,749.95	1.18%
	\$ 23,198.79	\$ 2,663.77	\$ 25,862.55	0.56%
	\$ 23,198.79	\$ 27,180.65	\$ 50,379.44	1.09%
	\$ 23,198.79	\$ 3,895.12	\$ 27,093.91	0.58%
	\$ 23,198.79	\$ 2,400.80	\$ 25,599.58	0.55%
\$ 46,397.57	\$ 23,198.79	\$ 63,209.67	\$ 132,806.03	2.86%
		\$ 56,876.27	\$ 56,876.27	1.23%
		\$ 141,313.73	\$ 141,313.73	3.05%
	\$ 23,198.79	\$ 6,064.76	\$ 29,263.54	0.63%
\$ 92,795.14	\$ 394,379.35	\$ 1,736,607.28	\$ 2,223,781.77	47.93%

Allocation Change Reduction/Increase	% Change
(17,236.66)	-23.85%
17,035.95	109.65%
(22,899.55)	-81.54%
123,081.13	23.27%
(26,050.73)	-6.65%
(10,152.91)	-6.71%
18,965.49	12.06%
(17,188.36)	-57.29%
(6,170.05)	-10.78%
22,627.72	78.23%
(21,914.54)	-89.75%
23,025.48	3181.80%
22,849.89	1568.25%
117,329.59	111.67%
22,114.09	488.23%
2,591.45	10.98%
13,263.74	31.97%
5,139.55	24.80%
7,783.44	18.27%
18,043.91	199.38%
8,542.58	50.08%
(28,070.97)	-17.45%
56,876.27	#DIV/0!
(816.27)	-0.57%
29,263.54	#DIV/0!
\$ 258,033.76	13.13%

Duck Water Shoshone				\$ 34,419.00	0.76%
Fallon Paiute -Shoshone				\$ 20,240.00	0.44%
Pyramid Lake Paiute				\$ 20,613.00	0.45%
Reno-Sparks Indian Colony				\$ 19,000.00	0.42%
Tribal Total				\$ 94,272.00	2.07%

\$ 35,085.22	0.76%
\$ 20,631.77	0.44%
\$ 21,011.99	0.45%
\$ 19,367.76	0.42%
\$ 96,096.73	2.07%

666.22	1.94%
391.77	1.94%
398.99	1.94%
367.76	1.94%
\$ 1,824.73	1.94%

State Allocation				\$ 2,424,595.00	53.27%
Nevada Tribal Emergency Coordinating Council				\$ 67,040.00	1.47%
State Total				\$ 2,491,635.00	54.74%

\$ 2,251,540.87	48.53%
\$ 68,337.63	1.47%
\$ 2,319,878.50	50.00%

(173,054.12)	-7.14%
1,297.63	1.94%
\$ (171,756.50)	-6.89%

FFY19 Award Total				\$ 4,551,655.00	100.00%
--------------------------	--	--	--	------------------------	----------------

FFY2020 Award \$ 4,639,757.00 100.00%

\$ 88,102.00	1.94%
--------------	-------

% Change from Last FFY 1.93560%

Draft County & City Allocation by Population & Base

FFY2020 Award \$ 4,639,757.00

Local Governments	2010 Census Population	7/1/18 Population	% of 7/1/18 Population	Standard Allocation 2015-2019	% of Total Allocation
Carson City	55,274	56,057	1.83%	\$ 72,274.00	1.59%
Churchill	16,271	16,503	0.54%	\$ 15,536.00	0.34%
Fallon	8,606	9,125	0.30%	\$ 28,082.25	0.62%
Clark	877,547	1,025,560	33.54%	\$ 529,000.00	11.62%
Las Vegas	583,756	644,113	21.07%	\$ 391,886.00	8.61%
N Las Vegas	216,961	248,701	8.13%	\$ 151,407.00	3.33%
Henderson	257,729	310,244	10.15%	\$ 157,243.03	3.45%
Mesquite	15,276	22,557	0.74%	\$ 30,000.00	0.66%
Douglas	46,997	49,070	1.60%	\$ 57,239.00	1.26%
Elko	44,408	49,920	1.63%	\$ 28,924.00	0.64%
West Wendover	4,410	4,406	0.14%	\$ 24,417.00	0.54%
Esmeralda	783	969	0.03%	\$ 723.66	0.02%
Eureka	1,987	1,951	0.06%	\$ 1,457.03	0.03%
Humboldt	16,528	16,989	0.56%	\$ 15,518.40	0.34%
Lander	5,775	6,065	0.20%	\$ 4,529.42	0.10%
Lincoln	5,345	5,255	0.17%	\$ 23,592.00	0.52%
Lyon	51,980	55,551	1.82%	\$ 41,486.21	0.91%
Mineral	4,772	4,690	0.15%	\$ 20,723.00	0.46%
Nye	43,946	47,856	1.57%	\$ 42,596.00	0.94%
Pershing	6,753	6,858	0.22%	\$ 9,050.00	0.20%
Storey	4,010	4,227	0.14%	\$ 17,057.00	0.37%
Washoe	105,922	111,291	3.64%	\$ 160,877.00	3.53%
Sparks	90,264	100,140	3.28%	\$ -	0.00%
Reno	225,221	248,806	8.14%	\$ 142,130.00	3.12%
White Pine	10,030	10,678	0.35%	\$ -	0.00%
Local Total	2,700,551	3,057,582	100.00%	\$ 1,965,748.00	43.19%

Duck Water Shoshone				\$ 34,419.00	0.76%
Fallon Paiute -Shoshone				\$ 20,240.00	0.44%
Pyramid Lake Paiute				\$ 20,613.00	0.45%
Reno-Sparks Indian Colony				\$ 19,000.00	0.42%
Tribal Total				\$ 94,272.00	2.07%

State Allocation				\$ 2,424,595.00	53.27%
Nevada Tribal Emergency Coordinating Council				\$ 67,040.00	1.47%
State Total				\$ 2,491,635.00	54.74%

FFY19 Award Total				\$ 4,551,655.00	100.00%
--------------------------	--	--	--	------------------------	----------------

County >100K	Base Allocation	Population Allocation	Base +Pop	% of Total Allocation
2.00%		\$ 1,638,012.45		
	\$ 28,998.48	\$ 30,030.94	\$ 59,029.42	1.27%
	\$ 28,998.48	\$ 8,841.01	\$ 37,839.49	0.82%
		\$ 4,888.46	\$ 4,888.46	0.11%
\$ 46,397.57	\$ 28,998.48	\$ 549,414.55	\$ 624,810.60	13.47%
		\$ 345,065.19	\$ 345,065.19	7.44%
		\$ 133,234.48	\$ 133,234.48	2.87%
		\$ 166,204.38	\$ 166,204.38	3.58%
		\$ 12,084.27	\$ 12,084.27	0.26%
	\$ 28,998.48	\$ 26,287.85	\$ 55,286.34	1.19%
	\$ 28,998.48	\$ 26,743.22	\$ 55,741.70	1.20%
		\$ 2,360.39	\$ 2,360.39	0.05%
	\$ 28,998.48	\$ 519.11	\$ 29,517.60	0.64%
	\$ 28,998.48	\$ 1,045.19	\$ 30,043.67	0.65%
	\$ 28,998.48	\$ 9,101.37	\$ 38,099.85	0.82%
	\$ 28,998.48	\$ 3,249.15	\$ 32,247.63	0.70%
	\$ 28,998.48	\$ 2,815.22	\$ 31,813.70	0.69%
	\$ 28,998.48	\$ 29,759.87	\$ 58,758.35	1.27%
	\$ 28,998.48	\$ 2,512.53	\$ 31,511.02	0.68%
	\$ 28,998.48	\$ 25,637.49	\$ 54,635.97	1.18%
	\$ 28,998.48	\$ 3,673.98	\$ 32,672.46	0.70%
	\$ 28,998.48	\$ 2,264.49	\$ 31,262.98	0.67%
\$ 46,397.57	\$ 28,998.48	\$ 59,620.98	\$ 135,017.03	2.91%
		\$ 53,647.15	\$ 53,647.15	1.16%
		\$ 133,290.73	\$ 133,290.73	2.87%
	\$ 28,998.48	\$ 5,720.43	\$ 34,718.92	0.75%
\$ 92,795.14	\$ 492,974.18	\$ 1,638,012.45	\$ 2,223,781.77	47.93%

\$ 35,085.22	0.76%
\$ 20,631.77	0.44%
\$ 21,011.99	0.45%
\$ 19,367.76	0.42%
\$ 96,096.73	2.07%

\$ 2,251,540.87	48.53%
\$ 68,337.63	1.47%
\$ 2,319,878.50	50.00%

FFY2020 Award	\$ 4,639,757.00	100.00%
----------------------	------------------------	----------------

% Change from Last FFY 1.93560%

Allocation Change Reduction/Increase	% Change
(13,244.58)	-18.33%
22,303.49	143.56%
(23,193.79)	-82.59%
95,810.60	18.11%
(46,820.81)	-11.95%
(18,172.52)	-12.00%
8,961.35	5.70%
(17,915.73)	-59.72%
(1,952.66)	-3.41%
26,817.70	92.72%
(23,056.61)	-90.33%
28,793.93	3978.92%
28,586.64	1961.98%
22,581.45	145.51%
27,718.21	611.96%
8,221.70	34.85%
17,272.14	41.63%
10,788.02	52.06%
12,039.97	28.27%
23,622.46	261.02%
14,205.98	83.29%
(25,859.97)	-16.07%
53,647.15	#DIV/0!
(8,839.27)	-6.22%
34,718.92	#DIV/0!
\$ 258,033.76	13.13%

666.22	1.94%
391.77	1.94%
398.99	1.94%
367.76	1.94%
\$ 1,824.73	1.94%

(173,054.12)	-7.14%
1,297.63	1.94%
\$ (171,756.50)	-6.89%

\$ 88,102.00	1.94%
--------------	-------

AGENDA ITEM #9 H2

Counties Only	2010 Census Population	7/1/18 Population	# Change	% Change
Carson City	55,274	56,057	783	1.42%
Churchill	16,271	16,503	232	1.43%
Fallon	8,606	9,125	519	6.03%
Clark	877,547	1,025,560	148,013	16.87%
Las Vegas	583,756	644,113	60,357	10.34%
N Las Vegas	216,961	248,701	31,740	14.63%
Henderson	257,729	310,244	52,515	20.38%
Mesquite	15,276	22,557	7,281	47.66%
Douglas	46,997	49,070	2,073	4.41%
Elko	44,408	49,920	5,512	12.41%
West Wendover	4,410	4,406	(4)	-0.09%
Esmeralda	783	969	186	23.75%
Eureka	1,987	1,951	(36)	-1.81%
Humboldt	16,528	16,989	461	2.79%
Lander	5,775	6,065	290	5.02%
Lincoln	5,345	5,255	(90)	-1.68%
Lyon	51,980	55,551	3,571	6.87%
Mineral	4,772	4,690	(82)	-1.72%
Nye	43,946	47,856	3,910	8.90%
Pershing	6,753	6,858	105	1.55%
Storey	4,010	4,227	217	5.41%
Washoe	105,922	111,291	5,369	5.07%
Sparks	90,264	100,140	9,876	10.94%
Reno	225,221	248,806	23,585	10.47%
White Pine	10,030	10,678	648	6.46%
Nevada Counties	<u>2,700,551</u>	<u>3,057,582</u>	<u>357,031</u>	<u>13.22%</u>

Nevada Tribal Emergency Coordinating Council Tribal Update	
From:	Brent Hunter
For Which Meeting:	NTECC Meeting - Friday, February 28, 2020
Tribal/Other Entity:	Duck Valley Shoshone Paiute Tribe <input type="text"/>
Presenter:	Brent Hunter
Summary of Update Information to be Provided	
<i>(Please provide high level discussion points associated with your update)</i>	
1	Applied for the FEMA Pre Disaster Mitigation grant in January for a new waste water lift station for the community.
2	Closed out the hazardous materials emergency preparedness grant. Finished response plan and was Council approved.
3	Received an extension on the BIA Tribal Resiliency Grant until the end of FY '20. Sponsored a tribal workshop on climate change.
4	In process of getting an MOU between Idaho State Health and Nevada State Health for services for Sho-Pai (pandemic, SNS, etc.).
5	Attended NEPA Summit in Las Vegas.

Nevada Tribal Emergency Coordinating Council Tribal Update	
From:	Alfreida Jake
For Which Meeting:	NTECC Meeting - Friday, February 28, 2020
Tribal/Other Entity:	Elko Band of the Te-Moak Tribe of Western Shoshone
Presenter:	Alfreida Jake
Summary of Update Information to be Provided	
<i>(Please provide high level discussion points associated with your update)</i>	
1	Emergency Response Training for CERT Would like to plan an estimated date, instructor list if any
2	What grants are available to Tribes that cannot compete with big cities like Las Vegas for rural areas specifically.
3	Will need to get NIMS training in Elko for Tribal Council Members who cannot all travel at once. Would like to see if there is other Tribal Council Members who would like to come to Elko once we get scheduled. Need Basic NIMS, ICS 100, 200 for now...maybe a two day training.
4	
5	

Nevada Tribal Emergency Coordinating Council Tribal Update	
From:	
For Which Meeting:	NTECC Meeting - Friday, February 28, 2020
Tribal/Other Entity:	
Presenter:	
Summary of Update Information to be Provided	
<i>(Please provide high level discussion points associated with your update)</i>	
1	Disaster box equipment upgrades
2	Discussion on the EMPG formula for tribal jurisdictions -- base and populations
3	Tribal training calendar status.
4	NTECC website?
5	

Nevada Tribal Emergency Coordinating Council Tribal Update	
From:	
For Which Meeting:	NTECC Meeting - Friday, February 28, 2020
Tribal/Other Entity:	Reno-Sparks Indian Colony
Presenter:	Daniel Thayer
Summary of Update Information to be Provided	
<i>(Please provide high level discussion points associated with your update)</i>	
1	Approved Continuity of Operations Plan
2	Non-Pharmaceutical Intervention Plan
3	EOP Clinic Updates, CISM, Emergency Operations Coordination, Public Information and Warning, Community Preparedness.
4	MGT-317 Training
5	

Agenda Item #16

American Red Cross Partnership

NTECC Meeting
February 28, 2020



1

Objectives

- Red Cross Scope of Service
- How Red Cross Partners with Indigenous Communities
- How Red Cross and PWNA partner together for the greater good in Preparedness, Response and Recovery



2

Congressional Charter

The Red Cross is chartered by the United States Congress to provide humanitarian services.

- Red Cross National Headquarters, located in Washington, D.C., is responsible for implementing policies and procedures that govern Red Cross activities and provides administrative and technical oversight and guidance to its seven divisions.
- Each region is familiar with hazards of the locality and surveys local resources for personnel, equipment, supplies, transport, emergency communications, and facilities available for disaster relief.
- Regions also formulate cooperative plans and procedures with local government and private organizations for relief activities should a disaster occur.



3

Our Services

Down the Street. Across the Country. Around the World.®



Disaster Services



Biomedical Services



Preparedness, Health and Safety Services

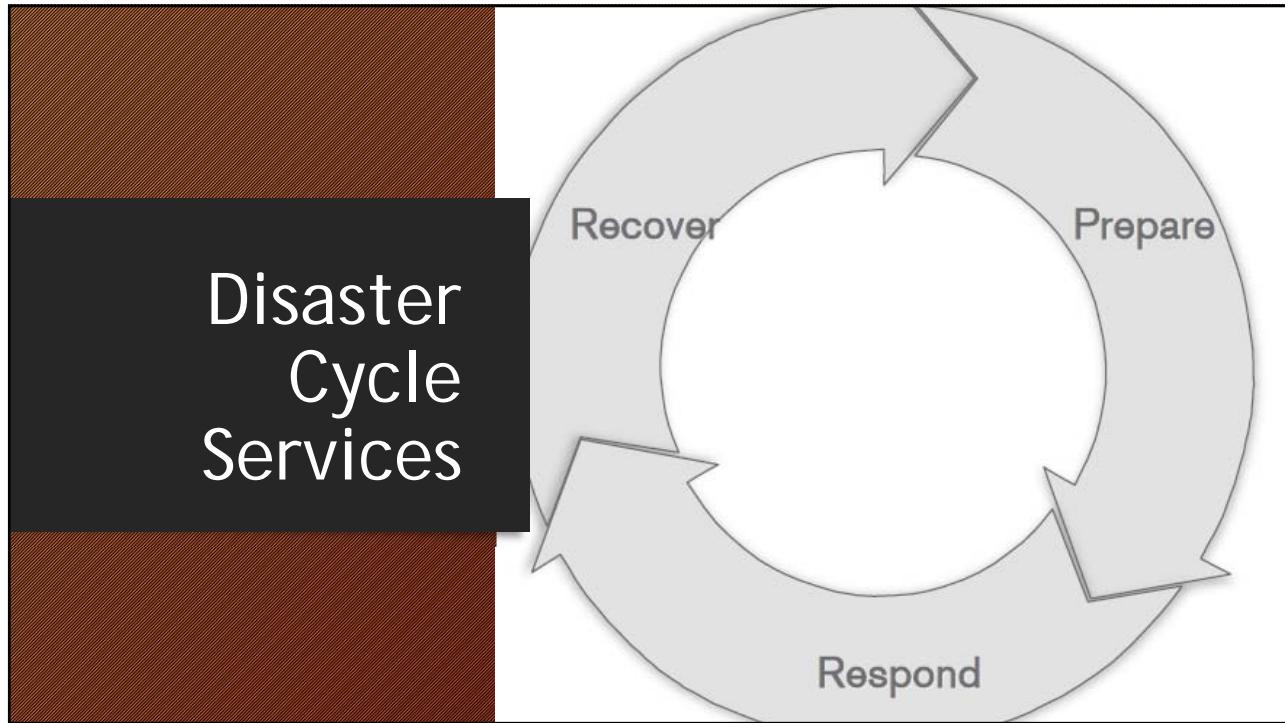


International Services



Service to the Armed Forces

4



5

Prepare

7 people die per day, on average, from a home fire.

In a home fire, can your family safely escape in just 2 minutes?

The slide features a large orange border. On the left, a black box contains the word 'Prepare' in white. Below it, a smaller black box contains the statistic '7 people die per day, on average, from a home fire.' On the right, a photograph of a smiling family (a woman, a young boy, and a man) is shown. A white text box with red text is overlaid on the bottom of the photo, asking 'In a home fire, can your family safely escape in just 2 minutes?'.

6

Red Cross Disaster Preparedness



- Home Fire Campaign
- Youth Preparedness
 - The Pillowcase Project (3-5th Grade)
 - Prepare with Pedro (K-2nd Grade)
- Be Red Cross Ready- Individuals/Families/Communities
- Ready Rating- Businesses/Schools/Organizations
- Hands-Only CPR

7

Respond

Every 8 minutes the Red Cross responds to a disaster.

2018 Disaster Response



In a second consecutive year of record wildfires, hurricanes, tragic shootings and other large crises, generous support enabled our disaster workforce—**90% volunteers**—to help millions of people in the U.S.



Over **8.2 million meals and snacks** served with partners



Over **2.2 million relief items** distributed



Over **290,000 overnight shelter stays** provided with partners



Over **188,000 health and mental health contacts** made

In 2018, we also helped people recover and stay safe from home fires, the nation's most frequent disaster.



Over **73,000 households** provided with recovery support



Nearly **400,000 smoke alarms** installed



Over **165,000 households** made safer through home safety visits

Every 8 minutes, someone affected by disaster is helped by donations to the Red Cross. Visit redcross.org to learn more.

Figures reflect \$10,000 and above Red Cross disaster response operations from January 1, 2018 to November 30, 2018. Home Fire Campaign statistics are current from January 1, 2018 to October 31, 2018.

000001-00 10/18

8

Red Cross Response in Disaster



- Supports Mass Care Portions of Emergency Support Function (ESF) 6
 - Sheltering
 - Feeding
 - Distribution of Emergency Relief Supplies
 - Family Reunification
- Additional services provided
 - Staff EOCs (Emergency Operations Centers) - Including FEMA Regions/NRCC (FEMA National EOC)
 - Damage Assessment
 - Disaster Health and Mental Health
 - Client Casework
 - Financial Assistance (when resources allow)

9

Recover



10

How Red Cross Engages With Partners

- Preparedness
- Response
- Immediate Recovery
- Long-Term Recovery



11

Collaborative Partners - We Can't Do It Alone

- FEMA
- Individual Tribes or Collectives
- State/Local Emergency Management
- National VOAD (Voluntary Organizations Active in Disaster)
- Indian Health Services
- BIA/TAC-G (Tribal Assistance Coordination Group - EM Arm of the BIA)
- National Congress of American Indians
- ITEM/USSET/NTEMC - Tribal Emergency Management Coalitions
- VOAD/COAD including PWNA at a local and National Level
- USNORTHCOMM/NORAD



12

F1

Red Cross Commitment

In the spirit of community, American Red Cross commits itself to building a strong and lasting partnership with American Indians and Alaska Natives. We aim to work with tribal leaders with the goal of assisting them in preparing for the hazards they face, reducing their disaster vulnerabilities, responding quickly and effectively when disasters strike, and recovering in their aftermath. Collaboration with Tribal communities is important to the American Red Cross.



13

WHEN DISASTER OCCURS: How Does the Red Cross Respond to Tribal Communities?

- Home Fire Response Services/Home Fire Campaign
- Sheltering/Training and Partnering
- Feeding/Training and Partnering
- Health Services
- Mental Health Services
- Spiritual Care
- Reunification
- Distribution of Relief Supplies
- Information & Referrals
- National Response Framework Co-Lead



14

Questions

No question is off limits

This is the time to ask ANYTHING.....

15


Contact

Jill Hemenway

American Red Cross

775-848-2926

Jill.hemenway@redcross.org



16